



Barr, Matthew (2008) Testbed – a walk-through. In: Digital Preservation Planning: Principles, Examples and the Future with Planets, 29th July 2008, British Library Conference Centre, London.

Copyright © 2008 The Author

A copy can be downloaded for personal non-commercial research or study, without prior permission or charge

The content must not be changed in any way or reproduced in any format or medium without the formal permission of the copyright holder(s)

When referring to this work, full bibliographic details must be given

<http://eprints.gla.ac.uk/72937>

Deposited on: 8 February 2013

Enlighten – Research publications by members of the University of Glasgow
<http://eprints.gla.ac.uk>

Testbed – a walk-through

Digital Preservation Planning: Principles, Examples and the Future with Planets, July 2008

Matthew Barr

HATII at the University of Glasgow



Humanities
Advanced Technology
& Information Institute



Contents

- Definitions and goals
- Achievements so far
- **Walkthrough**
- Testbed architecture and core technologies
- Future work



Definition

“A controlled environment for experimentation and evaluation, with metrics and benchmark content that allow comparison of tools and strategies”



Why do we need a Testbed for Digital Preservation?

- Perform scientific research in digital preservation
 - Evaluate preservation approaches in diverse “real life” settings
 - Avoid duplication of work
 - Maximise use of invested resources
- Need for a **dedicated research environment**
- Systematic execution of experiments by different institutions with
 - automated evaluation
 - reproducibility
 - documentation and accessibility



Contribution of the Testbed to Planets

- To preserve digital objects, we need:
 - Preservation tools:
 - Characterisation tools
 - Preservation action tools (migration / emulation)
 - A preservation plan
- The Planets Testbed will give us:
 - Information on the usability of preservation tools and services in various conditions / on various types of data, e.g.:
 - Degree of perservation of certain characteristics of data
 - Speed of tool
 - Institution independent results (focusing on tools and data only)
 - (Aggregated) information will feed into the Planets Tools Registry
 - Information can be used in a preservation plan



The Planets Testbed

- Foundation for objective evaluation of preservation tools and strategies:
 - Load content
 - Perform experiments: select data and tools, run the experiment, evaluate results, compare outcomes
 - Provide support for validation of preservation strategies
 - Benchmark tools and services
- Consists of:
 - Data storage, hardware, Planets software, Testbed application
 - Benchmark content



Achievements so far

- First Testbed prototype release in September 2007
- Planets-wide first release of Testbed in March 2008
- Release to be used by Planets partners for digital preservation experiments in July 2008
- Planning for corpora established
- Planning for participation of external institutions established



First Prototype (Sept. 2007)

- Mainly intended for internal feedback on user interface
- No integration with Planets Interoperability Framework (e.g. single sign-on, user management, data registry)
- Main focus on the experiment design and the experimenter user type
- Execution still a mock-up



First Release (March 2008)

- Experiments can be fully executed
- Custom versions of certain Interoperability Framework elements, such as the Service and Data Registries
- Integration of the IF single sign-on service
- Limited number of Services available
- Services can be registered through the Service Registration Wizard
- Arbitrary migration services can be registered and used in an experiment



New in current release (V.0.6, July 2008)

- Expanded experiment search functionality
- Experiment approval and scheduling system
- Data browser for browsing and selecting experiment data
- Planets FTP area for supplying sample experiment data
- WebDAV interface for uploading and managing data available
- Significant increase in the number of available services
- Various updates to the GUI

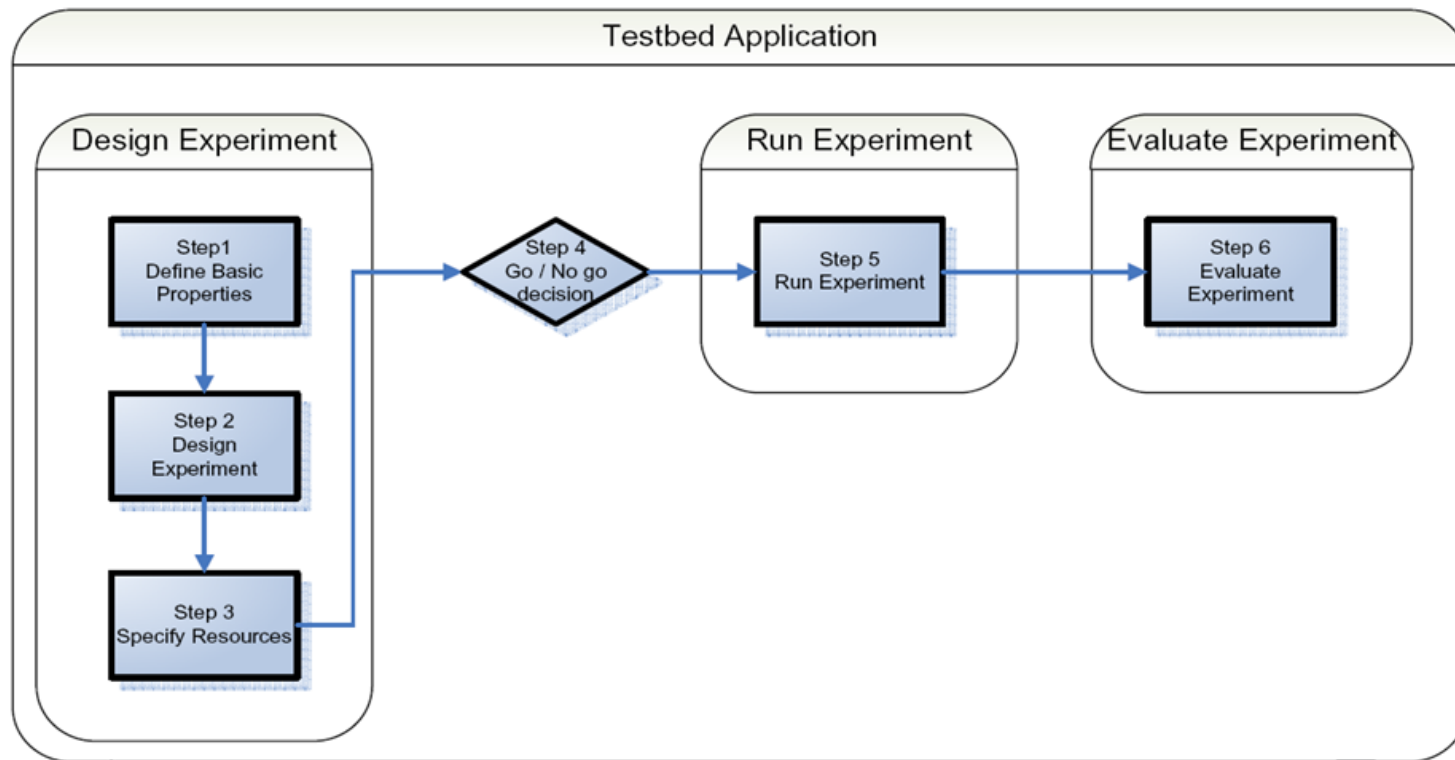


Services currently available

- PNG to TIFF Converter
- JPG To TIFF Converter
- JPG to PNG Converter
- TIFF to PNG Converter
- Xena DOC to ODF and ODF to PDF
- PS to PDF Basic Migration
- OpenXML Migration
- Simple Characterisation
- Image Identification Service



The Testbed Experiment Process



Experiment Evaluation

- For each digital object type the Testbed contains a list of characteristics, or properties, which may be of interest to the experimenter
- These properties can then be used to assess the functional performance of the characterisation, migration and emulation services
- Results can be aggregated to give average information about the performance of tools on various types of digital objects
- eXtensible Characterisation Definition Language (XCDL) and eXtensible Characterisation Extraction Language (XCEL) used to automatically extract and evaluate characteristics



Experiment methodology

- Built on work undertaken by the Dutch Digital Preservation Testbed and DELOS Testbed, but
 - Integration with Planets Interoperability Framework
 - Focus on workflow design and on automation
- Experiment Process: based on that of the Dutch and DELOS testbeds, but
 - different end-user typology → simplification (from 12 steps to 6)



The Testbed Central Instance and the Testbed software

- The Testbed Central Instance is hosted by HATII at the University of Glasgow
 - Available to all Planets partners at <http://testbed.hatii.arts.gla.ac.uk:8080/testbed/>
 - Experimenters are encouraged to use this central instance to ensure the seamless aggregation of experiment results
- A downloadable instance of the Testbed software is available for local installation at <http://gforge.planets-project.eu/gf/project/ptb>



Testbed Architecture: Key Principles

1. Designed to be platform independent, robust and scalable
 - Java Enterprise Edition
2. Designed to execute experiments on a wide array of preservation tools and services
 - Web Service approach: tools wrapped as web services can be accessed by the Testbed application by means of a platform-independent URI
3. Designed to be a part of the overall Planets software suite
 - Sharing of common components across the entire project
 - Testbed development can focus primarily on the components that are unique to the TB



Web Service Approach

- All preservation tools required for Testbed experiments are deployed and accessed as Web Services
- All tools must be wrapped as WSI-compliant web services so that
 - Services can be registered with the testbed
 - Service templates can be created
 - Experimenters can then access these templates to simulate the specific usage of a tool
 - The Testbed is **extensible**. Any WSI tool can be made available
- Steps involved in registering and configuring a service are handled by the Testbed administrator



Next steps

- Next releases
- Planning for corpora
- Planning of experiments
- Opening to external institutions



Planning for Corpora

- Digital preservation corpus: annotated collection of digital objects
 - Annotations should contain the criteria against which given algorithms will be evaluated
- By October 2008 a detailed plan for the building of the corpora will be in place
- Corpora will ensure that a sufficient knowledge base is available for each experiment
 - will avoid the duplication of effort for experimenters



Planning of Experiments

Next steps (summer 2008):

1. Decide on good evaluation criteria
 - Make use of PLATO case studies
2. Decide on test strategy
 - (in depth testing of small sets / broad testing / tools for most common object types / tests on as many different object types as possible / etc.)
3. Set up a test schema
 - Get partners involved & monitor progress
4. Evaluate and continue
 - Use evaluation information to reconsider steps and continue
 - Broaden the automated evaluation concepts



Opening to external institutions

- Current areas of work:
 - Work out Testbed benefits for external organisations
 - Define criteria for filtering organisations
 - Establish key contacts in the organisations
 - Devise concrete testing tasks the organisations to be involved in
 - Assign timescales and resources for testing
- Agreement with external institutions in place by November 2008
- Opening of Testbed for external experiments by April 2009



Testbed – a walk-through

Thanks!

Matthew Barr

HATII at the University of Glasgow



Humanities
Advanced Technology
& Information Institute

