



University
of Glasgow

Maxine Swingler: School of Psychology & Neuroscience

Gayle Pringle Barnes: College of Social Sciences

Project TEAM: Maxine Swingler, Lara Wehbe, Gayle Pringle Barnes, Heather Cleland-Woods, Noor Sabha, Valentine Conlan, Ellie Buglass, George Fournarakis

**WORLD
CHANGING
GLASGOW**

THE SUNDAY TIMES
THE SUNDAY TIMES

**GOOD
UNIVERSITY
GUIDE
2022**

**SCOTTISH
UNIVERSITY
OF THE YEAR**



University
of Glasgow

What we will cover today



Common issues in group work



About the staying connected toolkit



Activities to engage
students in the
resources

Group roles
**Planning group
meetings**



If you have questions just ask



Challenges in Group work

[www.menti.com 49 13 75 5](https://www.menti.com/4913755)

- What aspects of group work do *you* find most challenging?
- What aspects of *supervising student* group work do you find most challenging?

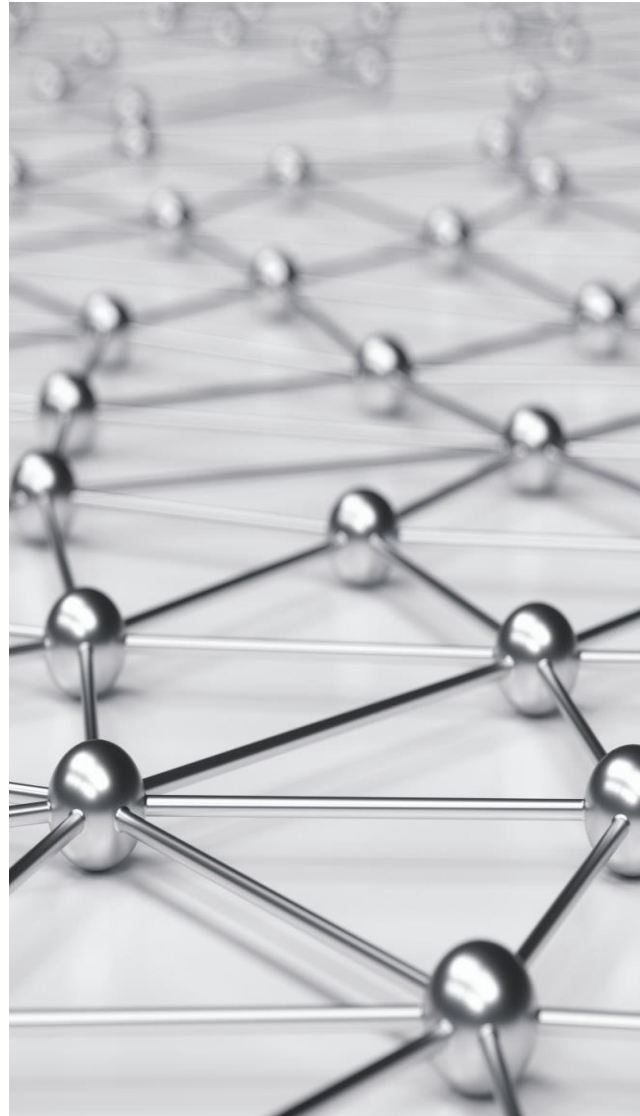




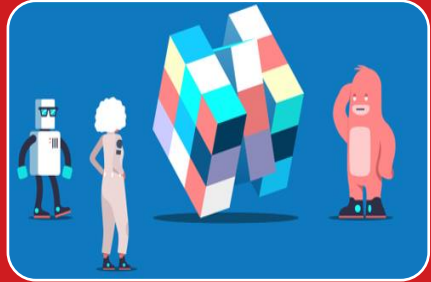


Staying Connected: a Toolkit for Effective Groupwork

1. Work in partnership with students to evaluate current group work practices and resources (Graham & Pringle Barnes, 2020)
 2. Co-create recommendations on what is working and gaps in provision
 3. Collaborate effectively in an online and blended environment
- Student led development of resources that support the:
 - **Process:** e.g. reflection, communication, problem solving.
 - **Product:** contributions to assessed group work
 - **Delivery** to students and staff across subject disciplines



Analysis & Recommendations



Organising Tasks, Roles & Goals

- Process rather than product (Reid & Garson, 2017)



Participation & Reflective process

- Fear of unequal contributions (Chang & Brickman, 2018)



Communication & Collaboration

- Diversity in groupwork (Mittelmeir, 2018)



Staying Connected Groupwork Toolkit



 Announcements

▶ Open all ▼ Close all

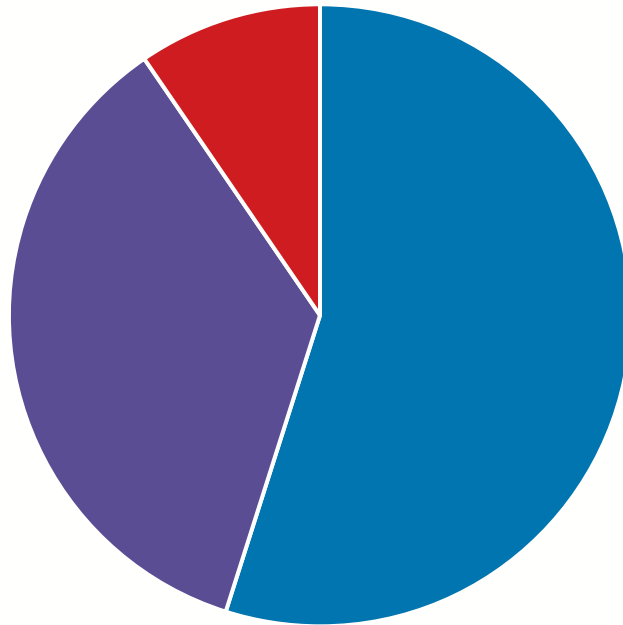
Instructions: Clicking on the section name will show / hide the section.

- ▶ Mind Map: How to use the resource?
- ▶ Getting Started: Group Organisation
- ▶ Communication & Collaboration
- ▶ Reflecting on Group work
- ▶ Online Tools to Support Group work



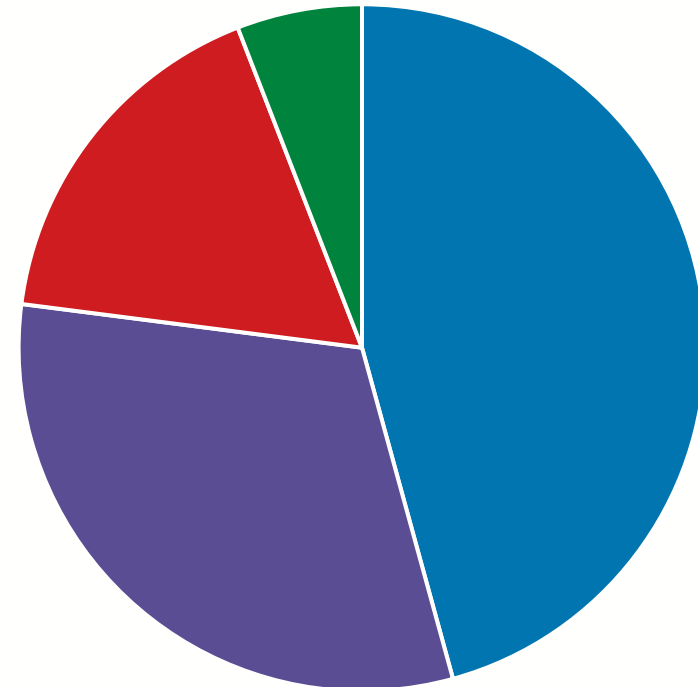
How are Students using the Resources?

Total views since August 2022



- Getting started/group organisation
- Addressing Issues/Collaboration
- Reflection and using online tools

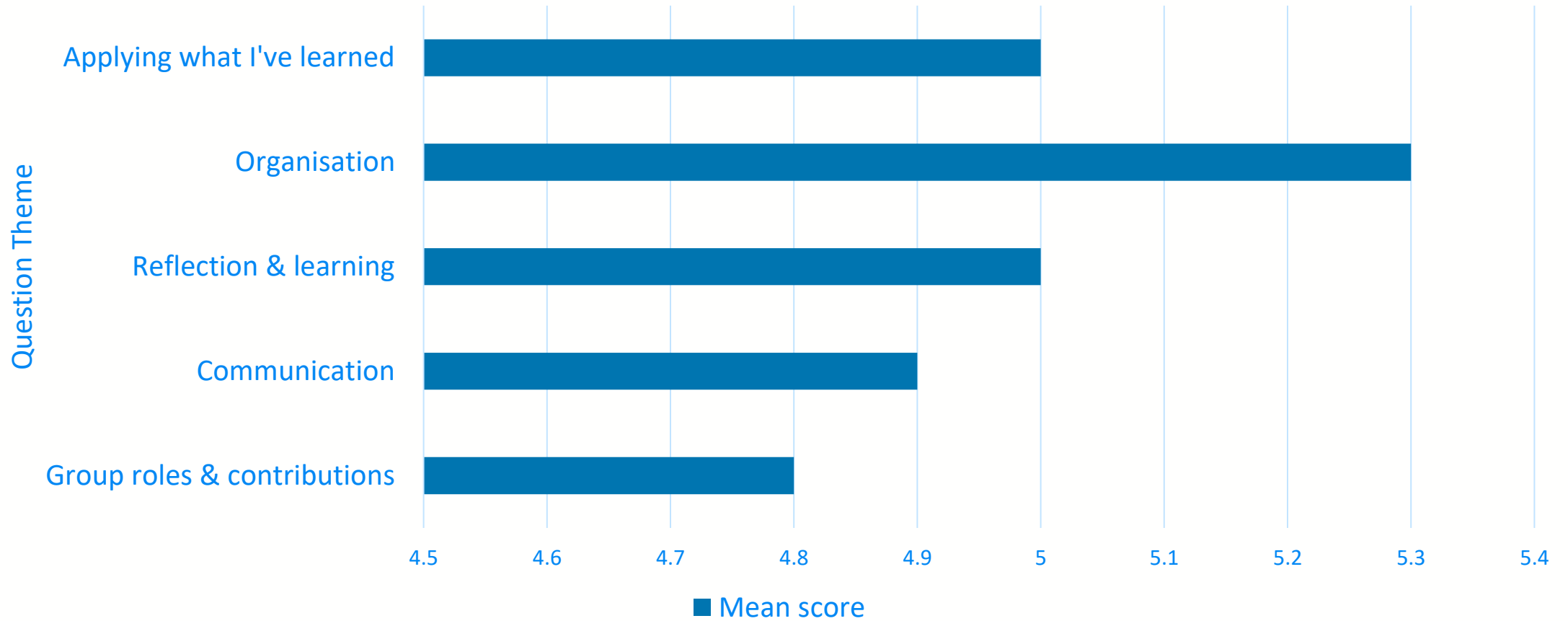
Total views - since August 2022



- Sways
- Checklists
- Videos
- Infographics



Student Feedback : Questionnaire





Analysis of Student Comments

The actioning tasks and resources in the "Getting Started" section was helpful because I could see literal examples of the ways I can navigate and manage group work."

"From reflection I have learnt what works well and what doesn't, allowing me to bring it forward to a new group project."

"Ice breakers for getting to know each other in the first place."

"The cultural section ... stopped me from taking things too personally."

"We used the video on team roles to effectively delegate different aspects of group work at the start of the course."

".....more reminders that these resources exist as I read them at the start and then completely forgot about them!"

"....a slightly 'fast-tracked' version or a pointer towards the bits they will find essential.."



Challenges in Group work (review)

[www.menti.com 49 13 75 5](https://www.menti.com/4913755)

- What aspects of group work do *you* find most challenging?
- What aspects of *supervising student* group work do you find most challenging?

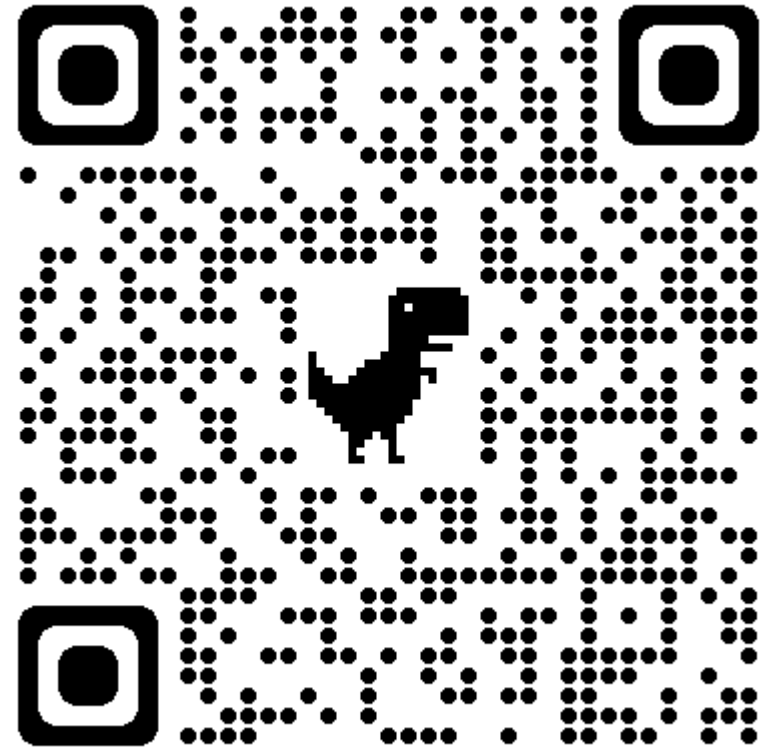




Activity : Group Roles & Organisation

<https://sway.office.com/ySmyUOllayFSem3T?ref=Link>

1. Identify key tips your students could employ to:
 - Get to know each other
 - Allocate group roles
 - Improve group organisation
2. Resources
 - Getting started
 - How to plan and structure a meeting
 - Templates for online groupwork
3. Share on www.menti.com **CODE 49 13 75 5**





University
of Glasgow

Tips for your students

www.menti.com 49 13 75 5





University
of Glasgow

Any Questions?

Share the Moodle and sways – anyone can access with the enrolment key (groupwork)

You can duplicate the sways and edit for your own teaching (Cite original authors and CC licence)

We would love to hear about how you and your students use the resources.

Maxine.swingler@glasgow.ac.uk

gayle.pringlebarnes@glasgow.ac.uk

#UofGWorldChangers

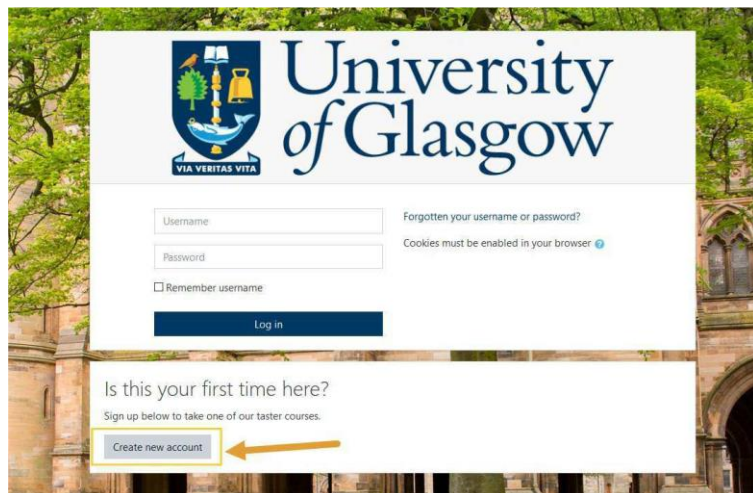


@UofGlasgow

How to Access the Site

Go to

<https://glasgowonline.gla.ac.uk>



Create an account

New account ▼ Collapse all

▼ Choose your username and password

Username ❌

The password must have at least 8 characters, at least 1 digit(s), at least 1 lower case letter(s), at least 1 upper case letter(s), at least 1 non-alphanumeric character(s) such as %, -, or #

Password ❌

▼ More details

Email address ❌

Email (again) ❌

First name ❌

Surname ❌

City/town

Country

There are required fields in this form marked ❌.

- Click on the link sent to your email address.
- Browse courses
- College of Science and Engineering
- School of Psychology
- Staying Connected
- When prompted enter **groupwork** for the enrolment key



References

- Chang, Y. & Brickman, P. (2018) When group work doesn't work: Insights from students. *CBE – Life Sciences Education*, 17. Article 52. <https://doi.org/10.1187%2Fcbe.17-09-0199>
- Graham, C. & Pringle Barnes, G. (2020, February 13). *Evidencing engaging and effective group work* [Conference presentation]. University of Glasgow 13th Learning and Teaching Conference, Glasgow, UK. <https://www.gla.ac.uk/myglasgow/add/events/pastconferencewebpages/2020learningandteachingconference/>
- Mittelmeier, J., Rientes, B., Tempelaar, D. & Whitelock, D. (2018) Overcoming cross-cultural group work tensions: mixed student perspectives on the role of social relationships. *Higher Education*, 75(1), 149-166. <https://doi.org/10.1007/s10734-017-0131-3>
- Reid, R. & Garson, K. (2017) Rethinking multicultural group work as intercultural learning. *Journal of Studies in International Education*, 21(3), 195-212. <https://doi.org/10.1177/1028315316662981>