




# BMJ Open Imaging timing after glioblastoma surgery (INTERVAL-GB): protocol for a UK and Ireland, multicentre retrospective cohort study

Conor S Gillespie <sup>1,2</sup>, Emily R Bligh,<sup>3</sup> Michael T C Poon,<sup>4,5</sup> Georgios Solomou <sup>6</sup>, Abdurrahman I Islam,<sup>7,8</sup> Mohammad A Mustafa,<sup>1,2</sup> Ola Rominiyi,<sup>9,10</sup> Sophie T Williams,<sup>9,11</sup> Neeraj Kalra,<sup>12</sup> Ryan K Mathew <sup>12,13</sup>, Thomas C Booth,<sup>14,15</sup> Gerard Thompson,<sup>16,17</sup> Paul M Brennan,<sup>5,16</sup> Michael D Jenkinson,<sup>1,2</sup> INTERVAL-GB Collaborative,<sup>18</sup> British Neurosurgical Trainee Research Collaborative (BNTRC),<sup>18</sup> Neurology and Neurosurgery Interest Group (NANSIG)<sup>19</sup>

**To cite:** Gillespie CS, Bligh ER, Poon MTC, *et al.* Imaging timing after glioblastoma surgery (INTERVAL-GB): protocol for a UK and Ireland, multicentre retrospective cohort study. *BMJ Open* 2022;**12**:e063043. doi:10.1136/bmjopen-2022-063043

► Prepublication history and additional supplemental material for this paper are available online. To view these files, please visit the journal online (<http://dx.doi.org/10.1136/bmjopen-2022-063043>).

CSG and ERB are joint first authors.

Received 22 March 2022  
Accepted 22 August 2022



© Author(s) (or their employer(s)) 2022. Re-use permitted under CC BY-NC. No commercial re-use. See rights and permissions. Published by BMJ.

For numbered affiliations see end of article.

## Correspondence to

Dr Conor S Gillespie;  
hcgill2@liv.ac.uk

## ABSTRACT

**Introduction** Glioblastoma is the most common malignant primary brain tumour with a median overall survival of 12–15 months (range 6–17 months), even with maximal treatment involving debulking neurosurgery and adjuvant concomitant chemoradiotherapy. The use of postoperative imaging to detect progression is of high importance to clinicians and patients, but currently, the optimal follow-up schedule is yet to be defined. It is also unclear how adhering to National Institute for Health and Care Excellence (NICE) guidelines—which are based on general consensus rather than evidence—affects patient outcomes such as progression-free and overall survival. The primary aim of this study is to assess MRI monitoring practice after surgery for glioblastoma, and to evaluate its association with patient outcomes.

**Methods and analysis** Imaging Timing after surgery for glioblastoma: an eVALuation of practice in Great Britain and Ireland is a retrospective multicentre study that will include 450 patients with an operated glioblastoma, treated with any adjuvant therapy regimen in the UK and Ireland. Adult patients ≥18 years diagnosed with glioblastoma and undergoing surgery between 1 August 2018 and 1 February 2019 will be included. Clinical and radiological scanning data will be collected until the date of death or date of last known follow-up. Anonymised data will be uploaded to an online Castor database. Adherence to NICE guidelines and the effect of being concordant with NICE guidelines will be identified using descriptive statistics and Kaplan-Meier survival analysis.

**Ethics and dissemination** Each participating centre is required to gain local institutional approval for data collection and sharing. Formal ethical approval is not required since this is a service evaluation. Results of the study will be reported through peer-reviewed presentations and articles, and will be disseminated to participating centres, patients and the public.

## STRENGTHS AND LIMITATIONS OF THIS STUDY

- ⇒ The study will include a large cohort of approximately 450 patients.
- ⇒ The short study eligibility period (6 months) will facilitate inclusion from over 20 neuro-oncology centres in the UK and Ireland.
- ⇒ Use of a mandatory training module will enable standardised data collection, with clarity of definitions.
- ⇒ The retrospective study design will increase case numbers and statistical power, but may lead to selection and information bias.
- ⇒ Study results may not be fully applicable to studies outside the UK and Ireland, or centres with limited access to MRI.

## INTRODUCTION

Glioblastoma is the most common malignant primary brain tumour,<sup>1</sup> with an annual incidence of 5 per 100 000 people.<sup>2–3</sup> In the UK, almost 3350 new diagnoses of glioblastoma are made every year.<sup>4</sup> Glioblastoma are aggressive and incurable. The median overall survival (OS) is 6–17 months,<sup>5</sup> extended for those treated with standard care,<sup>6</sup> a combination of maximal tumour debulking, radiotherapy and chemotherapy.<sup>6–8</sup> Glioblastoma is currently incurable due to their infiltrative nature (which means the disease burden can never be completely surgically cleared) and treatment resistance. Progression of residual is therefore inevitable.<sup>9–10</sup>

After primary treatment, patients are followed up with serial surveillance MRI to detect disease progression. The current National Institute for Health and Care Excellence (NICE) guidelines recommend



considering a postoperative scan to assess extent of resection within 72 hours of surgery, scans at every 3–6 months for the first 2 years after finishing treatment, followed by every 6–12 months for the first 5 years, then 1 to 2 yearly imaging for life. These NICE guidelines are based on general consensus, due to a lack of available evidence and differ from European Association of Neuro-Oncology guidelines, which advocate performing an MRI scan within 24–48 hours postoperatively.<sup>11</sup> In addition to routine scheduled imaging, MRI after surgery may also be indicated when clinical symptoms suggest disease progression (symptomatic/unscheduled).<sup>12 13</sup> A recent Cochrane review identified little evidence for an optimal imaging strategy.<sup>12</sup> Furthermore, a survey of neuro-oncology centres in the UK (GIN-CUP study) demonstrated substantial heterogeneity in imaging practices after surgery,<sup>14</sup> and timing of imaging has not been previously described.<sup>15</sup>

In the James Lind Alliance Priority Setting Partnerships, the effect of interval scanning on detection of tumour progression and survival was identified as a high priority for research.<sup>16–18</sup> This was due to the patient perspective of increased scanning frequency being associated with earlier progression detection, initiation of treatment and potential survival improvement. A recent position statement by the National Cancer Research Institute (NCRI) Brain Tumour group emphasised the importance of appropriately powered studies that examine imaging frequencies after surgery for glioblastoma, in order to address the lack of evidence evaluating the optimal scanning method, and if scheduled and triggered imaging should be employed in clinical practice.<sup>19</sup> There is little individual-level patient data on imaging practice and if we are to optimise the schedules for brain imaging, we need to first determine current practices in the UK and Ireland. Our study addresses this.

## Objectives

The primary objective of this study is to describe MRI surveillance practice after surgery for patients with glioblastoma who have received adjuvant oncology treatment. The secondary study objectives are to assess indications for scanning patients during the postoperative follow-up period, and to compare progression-free survival (PFS) and OS in patients who were and who were not scanned in accordance to NICE guidelines.

## METHODS AND ANALYSIS

### Study design

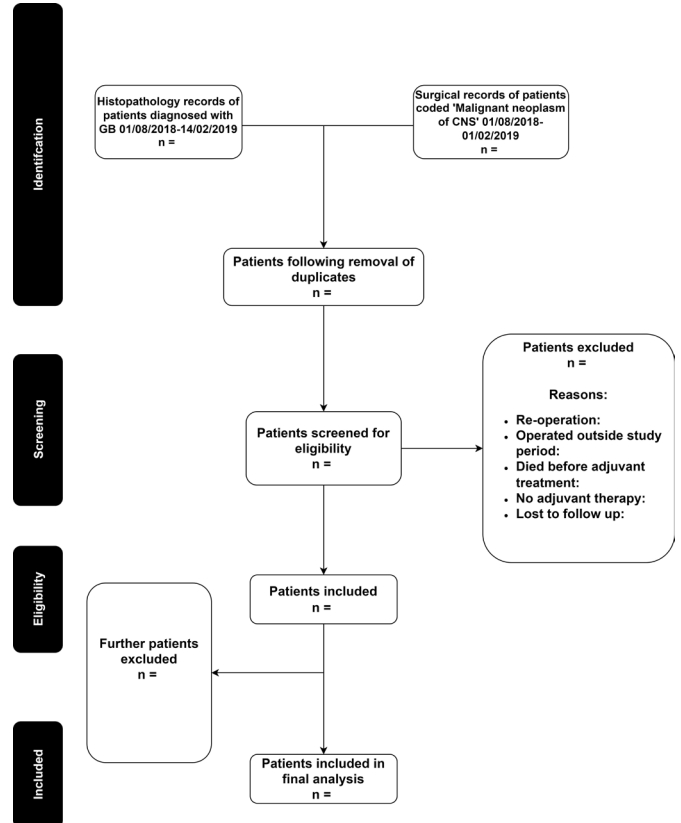
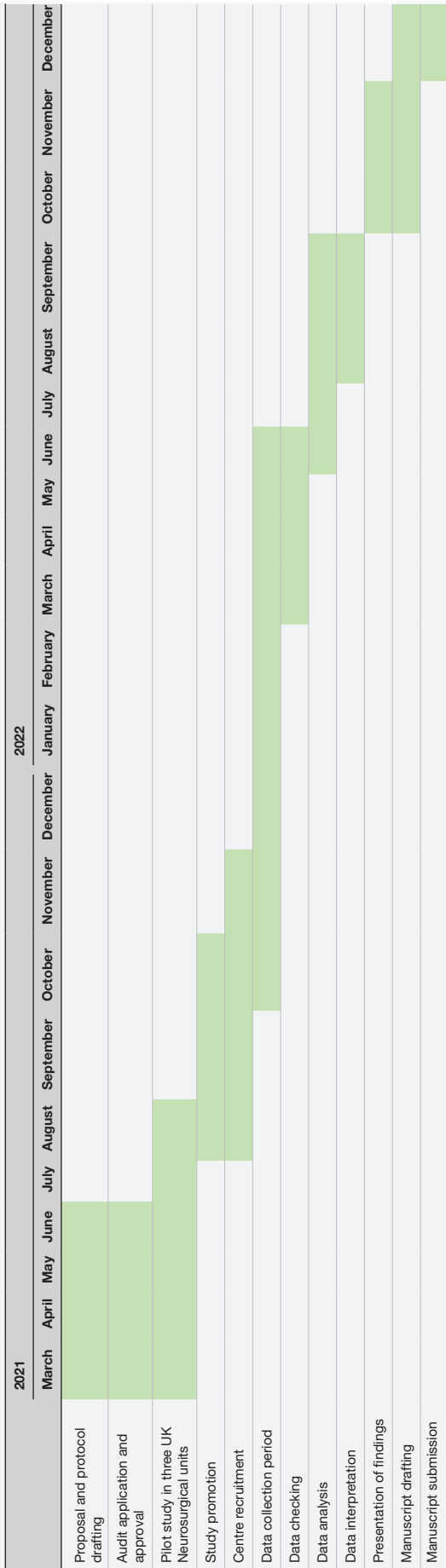
This is a national (UK and Ireland) multicentre retrospective study, for all UK and Ireland neuro-oncology units and associated neurosurgery services. Data will be collected on consecutive surgical patients with a new histopathological diagnosis of glioblastoma, with surgery between the dates of 1 August 2018 and 1 February 2019 (6 months) (tables 1 and 2). Local investigators will identify eligible patients using existing medical and radiological scan records. The study will assess routine clinical practice without change to patient care, so this study requires local institutional approval in each participating unit for data collection and sharing, but not National Health Service (NHS) research ethics committee (REC) approval. The study has been approved by the Walton Centre NHS Foundation Trust hospital audit committee (approval number NS 370). The study is led by the Neurology and Neurosurgery Interest Group (NANSIG), an international student and junior doctor led collaborative interest group ([www.nansig.org](http://www.nansig.org)),<sup>20 21</sup> and supported by the British Neurosurgical Trainee Research Collaborative.<sup>22</sup> The study data collection period will commence on Monday 15 November 2021, and will end on Thursday 21 July 2022.

**Table 1** Summary of recorded study variables

Recorded variable	Description
Baseline clinical and radiological	Age; date of surgery; sex; WHO performance status; presence of preoperative seizure activity; preoperative neurological deficit.
Radiological	Location; laterality; main anatomical area.
Surgical and histopathological	Extent of resection (gross total resection, subtotal resection or biopsy).
Histopathology	IDH status; MGMT promoter status.
Adjuvant treatment	Adjuvant radiotherapy start date; end date; radiotherapy dose and fractions; number of adjuvant temozolomide cycles completed.
Other supportive treatment	Enrolment into a clinical trial; reoperation for tumour; second-line or third-line chemotherapy; fourth-line chemotherapy; reirradiation; Referral to palliative care.
Follow-up imaging	Date of first postoperative MRI and indication; date of subsequent scans; if scans were unscheduled or scheduled; scan outcomes.
Outcome measures	Disease progression; overall survival.

All definitions can be found in the main text, and online supplemental appendix A  
IDH, isocitrate dehydrogenase; MGMT, O6-methylguanine-DNA methyltransferase.

**Table 2** Study (Gantt) flowchart



**Figure 1** Process of identifying a patient list at each collaborating neurosurgical unit. CNS, Central Nervous System; GB, Glioblastoma.

**Study population and eligibility criteria**

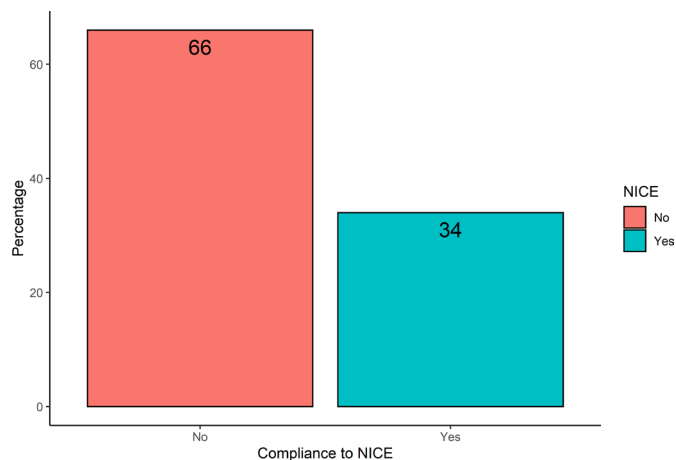
The study will include adults (≥18 years) newly diagnosed with glioblastoma, as defined by a consultant histopathologist, undergoing surgery (including biopsy) between 1 August 2018 and 1 February 2019 with any concomitant and/or adjuvant therapy, or radiotherapy alone (including reduced dose and palliative intention). Patients must have at least one postoperative MRI scan in relation to their glioblastoma diagnosis to be eligible. Patients will be excluded if they have no surgical intervention, if they had no adjuvant treatment, had no established histopathological diagnosis, follow-up with CT only, or unavailability of medical notes to ascertain follow-up. Patients who did not receive adjuvant treatment will be excluded- this is to exclude patients that solely underwent a diagnostic biopsy, without intent of increasing OS or PFS.

**Patient identification**

Local investigators will use the surgical and neuropathology records, hospital discharge codes and multidisciplinary team (MDT) documents to identify potentially eligible patients (figure 1). Investigators will assess each patient’s eligibility against the inclusion and exclusion criteria.

**Sample size**

The sample size calculation was derived from the results of a multicentre pilot study, including three participating



**Figure 2** Bar chart representing pilot data compliance to NICE guidelines. NICE, National Institute for Health and Care Excellence.

centres. The pilot included 123 patients, with a median survival of 9.6 months. The proportion of patients who had imaging scheduled in accordance with NICE recommendations was 34% (figure 2). The null hypothesis of the study is that more than half of patients (>50%) will not be scanned in accordance with NICE guidelines, and that groups scanned according to these guidelines will equate to improved OS (superiority assumption), and shorter PFS (due to recurrence being detected earlier due to more intense imaging surveillance). Therefore, we chose a HR of 1.35 as our minimally clinically important difference for the study, which roughly equates to 3 months of survival benefit. The margin is similar to the survival benefit of patients undergoing temozolomide therapy.<sup>6</sup> Assuming a mortality rate of 85% of patients during the 24-month follow-up period, to achieve 80% power, with a 5% type 1 error rate, the sample size required for the ImagiNg Timing aFtER surgery for glioblastoma: an eVALUation of practice in Great Britain and Ireland (INTERVAL-GB) study is 456 patients (approximately 22 Neurosurgical units, assuming an average patient list of 20 patients per neurosurgical centre).

### Data collection

Data will be collected at each centre by members of the local collaborating team. Data will be collected from a combination of the patient's clinical, radiological and histopathological records (coding for 'glioblastoma' or ICD-10 code 'C71.9- Malignant neoplasm of brain'), to obtain data points relating to surgery, adjuvant treatments and MRI follow-up. Data collection fields are outlined in online supplemental appendix A, and these relate to routinely available patient, tumour, molecular details, follow-up imaging and survival data until date of death, or last follow-up (last day of data collection period).

Each neuro-oncology centre will have a local collaborative team formed by the INTERVAL-GB local lead, local collaborators, a neurosurgical trainee and a consultant neurosurgeon. The INTERVAL-GB local teams must be

supported by a trainee and Consultant Neurosurgeon, or Clinical Oncologist to ensure quality of data collected is maintained. The INTERVAL-GB local lead will be responsible alongside local collaborators for data entry on the online database. Local teams are advised that if radiological data, such as tumour location, is not clear from the radiology report, clarification should be sought from the neurosurgical trainee, and reviewed by the consultant neurosurgeon, radiologist or oncologist if there is still any doubt. If there is any uncertainty with data, the local team must also clarify with the trainee, consultant, radiologist or oncologist. Data collaborators will be asked not to interpret scans and are instead advised to refer to the radiologist's report, and MDT reports to define progression.

### Castor database

Data will be collected locally and submitted to an online server on the secure database—Castor (Castor, New York, USA). Castor is a secure web application used to manage online study databases. Co-leads for the study (CSG and ERB) have overseen the development of a data collection tool (online supplemental appendix A) which is accessible via any electronic device with internet access. Castor databases comply with the UK Data Protection Act 2018 and the European Union General Data Protection Regulation (GDPR). Each patient will have a unique study number traceable to the identifiable patient information only through forms stored physically on NHS sites, or on password-protected NHS computers or servers.

### Recorded variables

#### Baseline clinical and radiological variables

Recorded variables, and their definitions, are listed in table 1 and online supplemental appendix A. These include Age at date of surgery, sex, WHO performance status, presence of pre-operative seizure activity (defined as any seizure occurring within 12 months of diagnosis and before surgery), presence of preoperative neurological deficit (defined as any deficit affecting sensory, motor, or cranial nerve function). Baseline radiological variables will include location of GBM, laterality and main anatomical area involved (online supplemental appendix A).

#### Surgical and histopathological variables

Extent of resection (gross total resection (GTR), subtotal resection (STR) or biopsy) will be categorised according to the following criteria: GTR is defined as no residual contrast-enhancing tumour on T1-weighted, contrast enhanced MRI within 48–72 hours postoperatively, as judged by the neuroradiologist and the neurosurgeon (ie, complete resection). If any residual contrast-enhancing tumour is present, it is classified as a STR. If a tumour has been less than 50% removed, or labelled as a biopsy, it will be considered a biopsy. Isocitrate dehydrogenase status (wild-type, mutant or not recorded) and O6-methylguanine-DNA methyltransferase promoter



status (unmethylated, methylated, not done, test failed/insufficient sample quality) will be recorded.

#### Adjuvant and supportive treatment details

Radiotherapy (start date, end date, total radiotherapy dose (Gy), fractions) and chemotherapy details (drug and number of cycles), enrolment into a clinical trial, name of trial if applicable, reoperation for tumour (with date of surgery, and extent of resection recorded), second, third or fourth line chemotherapy (with details of drug, start date, end date, dose, number of cycles) and reirradiation if applicable (start date, end date, total radiotherapy dose (Gy), fractions) will be recorded. Referrals to palliative care for patients who have had any adjuvant oncology treatment will be noted.

#### Follow-up imaging details

Date of first postoperative MRI and the indication (neurosurgical to assess extent of resection or radiotherapy planning), if MRI was completed within (1) 72 hours of surgery (yes/no) and (2) 48 hours of surgery, date of subsequent MRI scans and whether they were scheduled or unscheduled will be recorded. Unscheduled will be defined as a scan performed due to clinical symptoms, deterioration or emergency presentation. A scan outcome will be classified as stable disease, progressive disease, or pseudo-progression. If progressive disease, the MDT outcome associated with the scan will be reviewed and categorised into progressive disease confirmed or not confirmed.

#### Outcome measures

The study outcome measures will be OS, defined as the time in months from the date of surgery to the date of death as an endpoint and disease progression, defined as time in months from the date of surgery to the date of scan demonstrating progressive disease confirmed as per MDT.

#### Data validation and quality assurance

Primary investigators and the data collection team will meet midway through the data collection phase, and at completion of data collection, to identify any issues or concerns. The trainee collaborator is responsible for providing clarification for data entry points, or answering queries that the INTERVAL-GB local lead and local collaborators may have with the data collection process. It is the responsibility of the INTERVAL-GB local lead to arrange these meetings. Before commencement of data collection, all student and junior doctor collaborators (local lead, and all data collaborators who are not currently in neurosurgery or oncology specialist training) will need to attend a 60 min, online mandatory training module, hosted virtually over Zoom. This encompasses an introduction to glioblastoma and glioblastoma management, the evidence gap, the study protocol, a comprehensive live demonstration of the Castor data collection tool, and time to allow students and junior doctors to ask questions before commencement of the study itself. Each collaborator will be required to complete an online form, only

available after attending a mandatory training session, to evidence that as a data collector they have completed mandatory training.

Each trainee will be involved in the validation of local data collected by the NANSIG collaborator. After data have been completed for a participating centre, any scan results, or MDT results that are categorised as 'unclear' by the NANSIG collaborator, will be reviewed, validated, and reasons why provided by the trainee, to ensure internal validation of data ascertained. Trainee collaborators will also support day-to-day data collection by the local student lead should queries arise.

Five neuro-oncology centres will also carry out data validation. This will consist of an external team of data validators (same neurosurgical unit, who have not been involved in data collection or entering patient data), collecting and uploading the same patient information to Castor. This duplicate data will be removed after the study end date, and each data point analysed for similarity. We will accept a 95% similarity or greater between the data collection teams for each data point. If significant discrepancies are detected beyond this, the neurosurgical trainee or consultant will be asked to review each case to reach a consensus.

#### Statistical analysis

##### Descriptive analysis

Description of study data will be proportions for categorical variables and median with interquartile ranges for continuous variables. The prespecified subgroup included: patients whose imaging schedule was entirely concordant with NICE recommendations and patients whose imaging schedule had any deviation from NICE recommendations. The definition of concordance to NICE recommendations is defined as having follow-up scans every 3–6 months after finishing treatment (for the first 2 years of follow-up). Descriptive statistics will be generated to describe the primary objective of the study, according to this definition. Descriptive statistics will also be presented by this subgroup (a group that followed the guidelines and the group that did not have follow-up scans every 3–6 months). For the description of overall and PFS, we will use the Kaplan-Meier estimator to generate the medians by NICE concordant subgroups using the right-censored survival data, and use this method to compare subgroups with the log-rank test, followed by multivariable Cox-regression survival analysis to confirm statistically significant ( $p < 0.05$ ) findings. Patients without complete records will be excluded from statistical analysis.

#### Patient and public involvement

Public and patient involvement was attained for 'INTERVAL-GB' and played a role in the design and conception of the study. The 'INTERVAL-GB' study leads contacted The Brain Tumour Charity, and two representatives voluntarily agreed to provide insight and feedback on our proposed study from the viewpoint of somebody with a spouse who died as a result of a glioblastoma. We held



a 1-hour open video discussion with one representative, while the other provided us detailed written feedback via email. Following discussion and reflection, it was decided to refine the data collection proforma, to collect more data specifically targeted at palliative care enrolment including chemotherapy end dates, date of palliative care enrolment and at a small number of centres—the type of palliative care received, for example, hospice or community. The aim of these amendments was to increase study focus on patient quality of life. It was felt by both representatives that waiting for MRI results was an anxiety building process for the patient and their family, as such finding time from scan to communicated result would be valuable to the glioblastoma community, however, collecting this data was not deemed feasible retrospectively and would be more accurately ascertained in a prospective study.

## ETHICS AND DISSEMINATION

### Study registration

The local lead and accompanying research team at each unit are responsible for registering the study as a retrospective observational study with the clinical audit department of their respective centre, including Caldicott guardian and information governance approval as required. Local leads should send proof of local audit and data approvals to the primary investigators on registration before starting data collection.

### Local investigator responsibilities

Each local NANSIG student investigator will be responsible for the overall study conduct and compliance with the protocol. The investigator must have read and familiarised themselves with the protocol and the study requirements, as evidenced by attendance to the training programme. All assisting staff (such as supervising consultants and trainees) should be informed of the protocol and its availability for review. The local NANSIG student lead at each centre is responsible for the quality of data recorded in the database. Each local NANSIG investigator will be asked to identify what trust systems they will need to access to complete data collection (including access to imaging reports, neurosurgical and oncology records) before commencement of the project, at their local centre).

### Confidentiality and data protection

No patient identifiable information will be uploaded or stored on the Castor database. The clinical investigators can only view the records from their own centres. All patient records must be kept in a manner designed to protect patient confidentiality in secure storage with limited access, such as in a password-encrypted database if stored online, or in a locked secure file in the case of physical notes. All data obtained should only be disclosed and used for the purposes of this study. This must also comply with the requirements of the Data Protection Act 2018 and GDPR according to latest legislation. Training

on this is compulsory for local NANSIG student investigators and will be provided with access to an MRC Online module. Access to overall records from every site will be restricted to the study leads (ERB and CSG). Local data will be held for 2 years after the end of the study period, for clarification of data entries if required. Combined, anonymised data will be held on an encrypted, password protected, NHS Trust computer belonging to the study leads (ERB and CSG) for 15 years after study completion, to allow for further analysis and additional collaborations. After 15 years, the data file will be automatically deleted. Individual patient data will be anonymised before being accessed by the study authors, as part of institutional approval.

### Ownership

Control of the complete dataset arising from this study resides with the steering committee (named in the protocol). Control of local data rests with the local audit team. Proposals to use the data are welcomed and should be directed to the primary investigators, who will review the request alongside the steering committee.

### Dissemination of results

The results of the study will be presented by the steering committee at national and international scientific meetings, and will be submitted for publication in peer-reviewed journals. The study results will be reported using the Strengthening the Reporting of Observational studies in Epidemiology (STROBE) guidelines.

### Author affiliations

<sup>1</sup>Institute of Systems, Molecular and Integrative Biology, University of Liverpool, Liverpool, UK

<sup>2</sup>The Walton Centre NHS Foundation Trust, Liverpool, UK

<sup>3</sup>Department of Neurosurgery, Institute of Neurological Sciences, Glasgow, UK

<sup>4</sup>Usher Institute, The University of Edinburgh, Edinburgh, UK

<sup>5</sup>Translational Neurosurgery, Centre for Clinical Brain Sciences, University of Edinburgh, Edinburgh, UK

<sup>6</sup>School of Clinical Medicine, University of Cambridge, Cambridge, UK

<sup>7</sup>Department of Neurosurgery, Manchester Centre for Clinical Neurosciences, Manchester, UK

<sup>8</sup>Division of Neuroscience and Experimental Psychology, Faculty of Biology, Medicine and Health, University of Manchester, Manchester, UK

<sup>9</sup>Sheffield Teaching Hospitals NHS Foundation Trust, Sheffield, UK

<sup>10</sup>Department of Neuroscience, The University of Sheffield, Sheffield, UK

<sup>11</sup>Department of Oncology and Metabolism, The University of Sheffield, Sheffield, UK

<sup>12</sup>Department of Neurosurgery, Centre for Neurosciences, Leeds General Infirmary, Leeds Teaching Hospitals NHS Trust, Leeds, UK

<sup>13</sup>School of Medicine, University of Leeds, Leeds, UK

<sup>14</sup>Department of Neuroradiology, King's College Hospital, London, UK

<sup>15</sup>School of Biomedical Engineering & Imaging Sciences, King's College London, London, UK

<sup>16</sup>Department of Clinical Neurosciences, NHS Lothian, Edinburgh, UK

<sup>17</sup>Edinburgh Neuro-oncology Translational Imaging Research (ENTIRE), Centre for Clinical Brain Sciences, University of Edinburgh, Edinburgh, UK

<sup>18</sup>Society of British Neurological Surgeons, London, UK

<sup>19</sup>Neurology and Neurosurgery Interest Group, London, UK

**Twitter** Conor S Gillespie @conor\_sg, Michael T C Poon @MichaelTCPoon, Ola Rominiyi @OlaTweetz, Sophie T Williams @stw8127, Neeraj Kalra @neerajnkala, Ryan K Mathew @LeedsNeuro and Michael D Jenkinson @jenkinsonmd

**Acknowledgements** We would like to thank all investigators, patients, and collaborators in helping to design, conceptualise, and contribute to the study.

**Collaborators** INTERVAL-GB Collaborative: Hidayatul Abdullmalek, Suhaib Abualsaud, Gideon Adegboyega, Chinelo Afulukwe, Ahmed Ahmed, Najma Ahmed, Michael Amoo, Abdelsalam Nedal Al-Sousi, Yahia Al-Tamimi, Ajitesh Anand, Prithvi Bahu, Neil Barua, Harsh Bhatt, Emily R Bligh, Peter Bodkin, Ion Boiangiu, Abbey Boyle, Christiaan Bredell, Paul M Brennan, Talhah Chaudri, Jeremy Cheong, Ana Cios, Iona Cleer, David Coope, Ian Coulter, Giles Critchley, Harriet Davis, Paolo Jose De Luna, Nayan Dey, Bea Duric, Abdullah Egiz, Justyna O. Ekert, Chinedu Brian Egu, Jinendra Ekanayake, Anna Elso, Tomas Ferreira, Tom Flannery, Kwan Wai Fung, Rahul Ganguly, Conor S Gillespie, Sanay Goyal, Emily Hardman, Lauren Harris, Theodore Hirst, Kelvin Sunn Hoah, Sam Hodgson, Kismet Hossain-Ibrahim, Lena Mary Houlihan, Sami Squali Houssaini, Sadid Hoque, Dana Hutton, Kismet Ibrahim, Abed Islim, Mahnoor Javed, Michael D Jenkinson, Neeraj Kalra, Siddarth Kannan, Efhymia Kapasouri, Andrew Keenlyside, Kristy Kehoe, Bharti Kewlani, Prerna Khanna, Rosaline de Koning, Kunalika Sathish Kumar, Ashvin Kuri, Simon Lammy, Eunkyung Lee, Robert Magouirk, Andrew Martin, Riccardo Masina, Ryan K Mathew, Adele Mazzoleni, Patrick McAleavey, Gráinne McKenna, Daniel McSweeney, Saad Moughal, Mohammad Arish Mustafa, Engelbert Mthunzi, Trinh Ton Nu Ngoc, Shiva A Nischal, Michael O'Sullivan, Jay J Park, Jonathan Pesc-Smith, Peter Peterson, Isaac Phang, Puneet Plaha, Michael T C Poon, Shyam Pujara, George E Richardson, Marwa Saad, Shinjan Sangal, Veekshith Shetty, Natalie Simon, Robert Spencer, Rosa Sun, Irtiza Syed, Jesvin Tom Sunny, Anca-Mihaela Vasilica, Armin Nazari, Daniel O'Flaherty, Setthasorn Zhi Yang Ooi, Arslan Raja, Daniele Ramsay, Renitha Reddi, Daniel Richardson, Elena Roman, Ola Rominiyi, Dorina Roy, Omar Salim, Jeremiah Samkutti, Jashan Selvakumar, Thomas Santarius, Avani Shanbhag, Stuart Smith, Agbolahan Sofela, Edward Jerome St. George, Preethi Subramanian, Vaibhav Sundaresan, Kieron Sweeney, Ronald Tan, Nicole Turnbull, Yüwei Tao, Lewis Thorne, Rebecca Tweedie, Anastasia Tzatzidou, Babar Vaqas, Sara Venturini, Kathrin Whitehouse, Peter Whitfield, Jack Wildman, Isabelle Williams, Karl Williams, Victoria Wykes, Tiffany Tze Shan Ye, Kelvin Sunn Yap, Mahir Yousuff, Asaad Zulfiqar. British Neurosurgical Trainee Research Collaborative (BNTRC) committee: Michael T C Poon, Abdurrahman I Islim, Angelos Koliass, Julie Woodfield, Aswin Chari, Neeraj Kalra, Soham Bandyopadhyay, Robin Borchert, Rory Piper, Daniel M. Fountain. Neurology and Neurosurgery Interest Group (NANSIG) core committee members: Conor S Gillespie, Emily R Bligh, Soham Bandyopadhyay, Jay J Park, Setthasorn ZY Ooi, George E Richardson, Abigail Clynych, Oliver Burton, Avani Shanbhag, Moritz Steirnuecke, William Bolton, Bharti Kewlani, Alvaro Yanez Touzet, Hannah Redpath, Seong Hoon Lee, Abdullah Egiz, Joshua Erhabor, Orla Mantle. INTERVAL-GB Steering committee: Conor S Gillespie, Emily R Bligh, Michael T C Poon, Georgios Solomou, Melissa Gough, Abdurrahman I Islim, Christopher P Millward, Ola Rominiyi, Rasheed Zakaria, Paul M. Brennan, Stephen J. Price, Colin Watts, Sophie Camp, Thomas C Booth, Gerard Thompson, Samantha J Mills, Adam Waldman, Michael D Jenkinson.

**Contributors** CSG, ERB, GS, All, MTCP and MDJ conceived the study. CSG and ERB drafted the initial study protocol. GS, All, MAM, STW, OR, MTCP, NK, RKM, TCB, GT, PMB and MDJ provided input and suggestions for the final protocol. All authors proofread and approved the final manuscript.

**Funding** The authors declare a research bursary from the North West Cancer Fund, used to pay for the Data collection tool, Castor, for 6 months use (award number N/A). TCB declares funding from a Wellcome Trust/ESPRC grant (award number WT203148/Z/16/Z).

**Competing interests** None declared.

**Patient and public involvement** Patients and/or the public were involved in the design, or conduct, or reporting, or dissemination plans of this research. Refer to the Methods section for further details.

**Patient consent for publication** Not applicable.

**Provenance and peer review** Not commissioned; externally peer reviewed.

**Supplemental material** This content has been supplied by the author(s). It has not been vetted by BMJ Publishing Group Limited (BMJ) and may not have been peer-reviewed. Any opinions or recommendations discussed are solely those of the author(s) and are not endorsed by BMJ. BMJ disclaims all liability and responsibility arising from any reliance placed on the content. Where the content includes any translated material, BMJ does not warrant the accuracy and reliability of the translations (including but not limited to local regulations, clinical guidelines, terminology, drug names and drug dosages), and is not responsible for any error and/or omissions arising from translation and adaptation or otherwise.

**Open access** This is an open access article distributed in accordance with the Creative Commons Attribution Non Commercial (CC BY-NC 4.0) license, which

permits others to distribute, remix, adapt, build upon this work non-commercially, and license their derivative works on different terms, provided the original work is properly cited, appropriate credit is given, any changes made indicated, and the use is non-commercial. See: <http://creativecommons.org/licenses/by-nc/4.0/>.

#### ORCID iDs

Conor S Gillespie <http://orcid.org/0000-0002-9153-3077>  
 Georgios Solomou <http://orcid.org/0000-0002-9795-0517>  
 Ryan K Mathew <http://orcid.org/0000-0002-2609-9876>

#### REFERENCES

- Ostrom QT, Patil N, Cioffi G, *et al*. CBTRUS statistical report: primary brain and other central nervous system tumors diagnosed in the United States in 2013-2017. *Neuro Oncol* 2020;22:iv1-96.
- Philips A, Henshaw DL, Lamburn G, *et al*. Brain tumours: rise in glioblastoma multiforme incidence in England 1995-2015 suggests an adverse environmental or lifestyle factor. *J Environ Public Health* 2018;2018:7910754.
- Poon MTC, Brennan PM, Jin K, *et al*. Might changes in diagnostic practice explain increasing incidence of brain and central nervous system tumors? a population-based study in Wales (United Kingdom) and the United States. *Neuro Oncol* 2021;23:979-89.
- Brodbeck A, Greenberg D, Winters T, *et al*. Glioblastoma in England: 2007-2011. *Eur J Cancer* 2015;51:533-42.
- Zreik J, Moinuddin FM, Yolcu YU, *et al*. Improved 3-year survival rates for glioblastoma multiforme are associated with trends in treatment: analysis of the National cancer database from 2004 to 2013. *J Neurooncol* 2020;148:69-79.
- Stupp R, Mason WP, van den Bent MJ, *et al*. Radiotherapy plus concomitant and adjuvant temozolomide for glioblastoma. *N Engl J Med* 2005;352:987-96.
- Brown TJ, Brennan MC, Li M, *et al*. Association of the extent of resection with survival in glioblastoma: a systematic review and meta-analysis. *JAMA Oncol* 2016;2:1460-9.
- D'Amico RS, Englander ZK, Canoll P, *et al*. Extent of resection in Glioma-A review of the cutting edge. *World Neurosurg* 2017;103:538-49.
- McBain C, Lawrie TA, Rogozińska E, *et al*. Treatment options for progression or recurrence of glioblastoma: a network meta-analysis. *Cochrane Database Syst Rev* 2021;5:Cd013579.
- Brennan PM, Borchert R, Coulter C, *et al*. Second surgery for progressive glioblastoma: a multi-centre questionnaire and cohort-based review of clinical decision-making and patient outcomes in current practice. *J Neurooncol* 2021;153:99-107.
- Weller M, van den Bent M, Preusser M, *et al*. EANO guidelines on the diagnosis and treatment of diffuse gliomas of adulthood. *Nat Rev Clin Oncol* 2021;18:170-86.
- Thompson G, Lawrie TA, Kernohan A, *et al*. Interval brain imaging for adults with cerebral glioma. *Cochrane Database Syst Rev* 2019;12:Cd013137.
- Shukla G, Alexander GS, Bakas S, *et al*. Advanced magnetic resonance imaging in glioblastoma: a review. *Chin Clin Oncol* 2017;6:40.
- Booth TC, Luis A, Brazil L, *et al*. Glioblastoma post-operative imaging in neuro-oncology: current UK practice (GIN cup study). *Eur Radiol* 2021;31:2933-43.
- Thust SC, Heiland S, Falini A, *et al*. Glioma imaging in Europe: a survey of 220 centres and recommendations for best clinical practice. *Eur Radiol* 2018;28:3306-17.
- JL A. *Neuro-oncology Top 10*, 2015. Available: <https://www.jla.nihr.ac.uk/priority-setting-partnerships/neuro-oncology/top-10-priorities/>
- Bauml JM, Troxel A, Epperson CN, *et al*. Scan-associated distress in lung cancer: Quantifying the impact of "scanxiety". *Lung Cancer* 2016;100:110-3.
- Dantendorfer K, Wimberger D, Katschnig H, *et al*. Claustrophobia in MRI scanners. *Lancet* 1991;338:761-2.
- Booth TC, Thompson G, Bulbeck H, *et al*. A position statement on the utility of interval imaging in standard of care brain tumour management: defining the evidence gap and opportunities for future research. *Front Oncol* 2021;11:620070.
- Gillespie CS, Bandyopadhyay S, Jenkins AJ, *et al*. Inspiring the next generation. *Lancet Neurol* 2021;20:256-7.
- Park JJ, Ooi SZY, Gillespie CS, *et al*. The Neurology and Neurosurgery Interest Group (NANSIG)-ten years of cultivating interest in clinical neurosciences. *Acta Neurochir* 2022;164:937-46.
- Chari A, Jamjoom AA, Edlmann E, *et al*. The British neurosurgical trainee research Collaborative: five years on. *Acta Neurochir* 2018;160:23-8.



## APPENDICES

### APPENDIX A: Require data fields

Baseline demographics				Information source <b>Bold= primary source</b>	Definition
1.	Age at surgery (years)	Free field	Required entry	<b>Patient notes</b> , surgical theatre logbooks	Patient age at the date of their surgery in years.
2.	Sex	Male, Female	Required entry	<b>Patient notes</b>	What was the sex of the patient?
3.	Date of surgery	Dd/mm/yyyy	Required entry (must be between 01/08/2018 and 01/02/2019)	<b>Surgical theatre logbooks</b> , Patient notes/clinic letters,	What was the date the patient had their first operation?
4.	Tumour Laterality	Right, Left, Midline	Required entry	<b>Radiology scans (i.e. PACS)</b> , operation note, clinic letters	The location of the tumour as defined by a consultant radiologist on a pre-operative MRI/CT scan. If report not available, from the consultant Neurosurgeon's clinic letters/operation notes is acceptable.
5.	Main anatomical area involved	Frontal lobe, Parietal lobe, Temporal lobe, Occipital lobe, Limbic lobe, Thalamus and basal ganglia, Corpus callosum, brainstem, Insula	Required entry	<b>Radiology scans (i.e. PACS)</b>	The primary area of located tumour as defined by a consultant radiologist on a pre-operative MRI/CT scan. If report not available, from the consultant Neurosurgeon's clinic letters/operation notes is acceptable. If two lobes are mentioned by a surgeon/neuroradiologist i.e 'Frontotemporal', please use the first lobe mentioned. For example, this would be classified as 'frontal lobe'.
6.	WHO performance status prior to surgery	0, 1, 2, 3, or 4	Required entry	<b>Clinic letters</b> , surgical logbooks, MDT meetings	Performance status as defined by the consultant neurosurgeon before surgery.
7.	Pre-operative seizure activity	Seizure activity present, No seizure activity	Required entry	<b>Pre-operative clinic letters</b> and/or pre-	Did the patient have a seizure/s prior to surgery?



				operative CT/MRI requests	
8.	Pre-operative neurological deficit	Deficit present, No deficit	Required entry	<b>Pre-operative clinic letters</b> and/or pre-operative CT/MRI requests	Did the patient have a neurological deficit prior to surgery?
Operative details					
9.	Extent of resection*	Gross total resection (GTR), subtotal (STR)/partial/debulking, biopsy*	Required entry	<b>Surgical logbooks</b> , clinic letters	GTR is defined as NO residual enhancing disease (RED) of contrast enhanced tumour as seen on T1-weighted, contrast-enhanced MRI within 72hours post operatively as judged/seen by the neuroradiologist and the neurosurgeon i.e. complete resection. The neuroradiologist and the neurosurgeon will have to reach an agreement. If there is any residual tumour present, it will be classified as a subtotal/partial resection (STR). If a tumour has been incompletely removed (<50%) or labelled as biopsy, it should be considered a biopsy.
10.	IDH status**	Wild-type, mutant, Not done	Required entry	<b>Pathology report</b> , clinic letters, MDT meetings	IDH status as defined by a consultant neuropathologist or other appropriate pathology report. A clinical note by the surgeon/treating oncologist outlining specifically the IDH status is also acceptable. Mutant also means IDH positive based on type of staining, and 'IDH negative' will be labelled as 'IDH wild-type' for the purposes of the study as they are the same.
11.	MGMT promoter status	Unmethylated, Methylated, Not done, Test failed, Inconclusive (low levels of methylation)	Required entry	<b>Pathology report</b> , clinic letters, MDT meetings	MGMT status as defined by a consultant neuropathologist or other appropriate pathology report. A clinical note by the surgeon/treating oncologist outlining the MGMT promoter status is also acceptable. A

					'positive' MGMT status means methylated, and 'negative' unmethylated.
Additional treatments					
12.	Did the patient receive radiotherapy?	Yes, No, not given	Required entry	<b>Clinic letters</b> , MDT meetings	Did the patient complete any adjuvant (after surgery) radiotherapy? This is defined by a clinical note by either a consultant oncologist, or other cancer specialist. A clinical note from a consultant neurosurgeon saying the patient has completed radiotherapy is acceptable.
13.	Radiotherapy start date	Dd/mm/yyyy	Appears if answered Yes to previous question; Required entry	<b>Clinic letters</b> , MDT meetings	This is defined by a clinical note by either a consultant oncologist, or other cancer specialist. A clinical note from a consultant neurosurgeon saying the patient has completed radiotherapy is acceptable.
12.	Radiotherapy end date	Dd/mm/yyyy	Appears if answered previous question; Required entry	<b>Clinic letters</b> , MDT meetings	This is defined by a clinical note by either a consultant oncologist, or other cancer specialist. A clinical note from a consultant neurosurgeon saying the patient has completed radiotherapy is acceptable.
14.	Total Radiotherapy dose (Gy)	Number	Appears if answered previous question; Required entry	<b>Clinic letters</b> , MDT meetings	This is defined by a clinical note by either a consultant oncologist, or other cancer specialist. A clinical note from a consultant neurosurgeon saying the patient has completed radiotherapy is acceptable. The number is usually between 54 and 60 Gy for reference.
15.	Radiotherapy fractions	Free field	Appears if answered previous question; Required entry	<b>Clinic letters</b> , MDT meetings	This is defined by a clinical note by either a consultant oncologist, or other cancer specialist. A clinical note from a consultant neurosurgeon saying the patient has completed radiotherapy is acceptable.
16.	Completed concomitant Temozolomide?	Yes, No	Appears if answered previous question; Required entry	<b>Clinic letters</b> , MDT meetings	This is defined by a clinical note by either a consultant oncologist, or other cancer specialist. A clinical note from a consultant

					neurosurgeon saying the patient has completed temozolomide therapy is acceptable. Concomitant means completed concurrently as the adjuvant radiotherapy.
17.	Adjuvant Temozolomide given?	Yes, No	Required entry	<b>Clinic letters</b> , MDT meetings	This is defined by a clinical note by either a consultant oncologist, or other cancer specialist. A clinical note from a consultant neurosurgeon is acceptable. Adjuvant means completed after the radiotherapy treatment, and is commonly started after radiotherapy treatment has finished.
18.	Number of adjuvant Temozolomide cycles completed	1, 2, 3, 4, 5, 6, >6	Required entry	<b>Clinic letters</b> , MDT meetings	This is defined by a clinical note by either a consultant oncologist, or other cancer specialist. A clinical note from a consultant neurosurgeon is acceptable. Most patients will have 6 cycles if completing a full course.
19.	Enrolled onto clinical trial?	Yes, No	If yes, additional questions appear asking: 1. Name of trial, and 2. Date of enrolment onto the trial	<b>Clinic letters</b> , MDT meetings	This is defined by a clinical note by either a consultant oncologist, or other cancer specialist. A clinical note from a consultant neurosurgeon is acceptable. If a patient has enrolled onto a clinical trial, please provide the name or trial number.
20.	Re-operation for tumour?	Yes, No	Required entry If Yes, additional question asking for date of re-operation (dd/mm/yyyy).	<b>Surgical logbooks</b> , clinic letters, radiology scans	A further operation/surgery with intention of further removal of the tumour, debulking, or biopsy. Surgeries for other tumours, ones related to other neurosurgical problems e.g a VP shunt for hydrocephalus, should not be included.
21.	Second line chemotherapy?	Yes, No	Required entry If yes, additional questions asking the agent, number of cycles,	<b>Clinic letters</b> , MDT meetings	Did the patient undergo second line chemotherapy (i.e. chemotherapy treatment for a progression of their tumour)? This is defined by a clinical note by either a consultant oncologist, or other cancer specialist. A clinical

			dose, and start and end date of chemotherapy.		note from a consultant neurosurgeon saying the patient has second line chemotherapy is acceptable. This will often be CCNU (Lomustine) or Bevacizumab (Avastin).
22.	Third line chemotherapy?	Yes, No	Required entry If yes, additional questions asking the agent, number of cycles, dose, and start and end date of chemotherapy.	<b>Clinic letters</b> , MDT meetings	Did the patient undergo third line chemotherapy (i.e, chemotherapy treatment for a second progression of their tumour)? This is defined by a clinical note by either a consultant oncologist, or other cancer specialist. A clinical note from a consultant neurosurgeon saying the patient has had third line chemotherapy is acceptable. This will often be CCNU (Lomustine), Procarbazine, Temozolomide, or Etoposide.
23.	Fourth line chemotherapy?	Yes, No	Required entry If yes, additional questions asking the agent, number of cycles, dose, and start and end date of chemotherapy.	<b>Clinic letters</b> , MDT meetings	Did the patient undergo fourth line chemotherapy (i.e, chemotherapy treatment for a third progression of their tumour)? This is defined by a clinical note by either a consultant oncologist, or other cancer specialist. A clinical note from a consultant neurosurgeon saying the patient has had third line chemotherapy is acceptable. This will often be CCNU (Lomustine), Procarbazine, Temozolomide, or Etoposide.
24.	Re-irradiation?	Yes, No	Required entry If yes, additional questions asking start date, end date, dose and fractionations	<b>Clinic letters</b> , MDT meetings	Did the patient undergo further radiotherapy at any point in the clinical journey? This has to have occurred after a previous radiotherapy cycle has been given, and is defined by a clinical note by either a consultant oncologist, or other cancer specialist. A clinical note from a consultant neurosurgeon saying the patient has had re-irradiation is acceptable.



25.	Palliative care?	Yes, No	Required entry If yes, additional question asking date of enrolment in palliative care.	<b>Clinic letters</b> , MDT meetings	Has the patient been moved to a palliation treatment strategy at any point? This may mean stopping chemotherapy, radiotherapy or other existing treatments, withdrawing treatment, or other suitable regression from active treatment. This is defined by a consultant neurosurgeon in clinic letters, and/or consultant oncologist when appropriate.
Imaging					
26.	Date of first post-op MRI	Dd/mm/yyyy	Only appears if non-biopsy was selected on extent of resection question; Required entry	<b>Radiology scans</b>	This is the first date of MRI that happens after the surgery, and most usually happens within 72 hours of the initial surgery. CT scans should <b>not</b> be counted.
27.	Indication	Neurosurgical- assess extent of resection, Radiotherapy planning	Required entry	<b>Radiology scans</b>	Indication as listed in the radiology report- this is defined by the consultant neuroradiologist specifically. If the scan is within 72 hours, it should be labelled as assess extent of resection, and if it is afterwards, it should be labelled as radiotherapy planning.
MRI Scans (recurring)					
28.	Date of next MRI scan	Dd/mm/yyyy	Required entry	<b>Radiology scans</b>	Date of subsequent MRI scan after this.
29.	Sequences used	<ul style="list-style-type: none"> <li>• T2</li> <li>• FLAIR</li> <li>• DWI</li> <li>• T1 (Pre-contrast)</li> <li>• T1 (Post-contrast)</li> <li>• MR Perfusion</li> <li>• Diffusion Tensor Imaging</li> </ul>	Required entry	<b>Radiology scans</b>	Sequences used for each MRI scan.

		<ul style="list-style-type: none"> <li>MR Spectroscopy</li> </ul>			
30.	Scheduled or unscheduled?	Scheduled, unscheduled	Required entry	<b>Radiology scans</b>	Defined by the indication on the radiology scans. Please see the objectives for a detailed definition of 'scheduled' and 'unscheduled'. If a radiology report is not available, it may be mentioned by a consultant neurosurgeon/oncologist in the clinic letters. This is acceptable.
31.	If unscheduled, due to clinical symptoms or deterioration?	Yes, No	Appears if answered Unscheduled on previous question; Required entry	<b>Radiology scans</b>	Defined in the radiology scans. If a radiology report is not available, it may be mentioned by a consultant neurosurgeon/oncologist in the clinic letters. This is acceptable.
32.	Scan shows	Stable disease, Progressive disease, Pseudoprogession, Unclear	Required entry; if 'Unclear' selected, text-box to prompt collaborator to either copy the report if the report is unclear, or contact the study team if they are unclear how to interpret the scan report to discuss.	<b>Radiology scans</b>	Defined in the radiology scan report, by a consultant neuroradiologist specifically. If there is any report of progression (this includes 'mixed disease', it should be coded as progressive disease. If the report is unclear between pseudoprogession and progressive disease, please select pseudoprogession and then look at the next scan. If you are unsure of what the scan report describes at any point, please ask the trainee at your centre for assistance, or contact the study team. If there is no report listed for the scan, please contact the trainee for your centre for clarification.
33.	What was the MDT outcome associated with this scan?	No MDT, Stable disease, Progressive disease, Pseudoprogession, Clinical uncertainty	Required entry	<b>MDT meetings, clinic letters</b>	Defined as a MDT meeting record confirming the decision that the scan shows progression, and is the outcome of the discussion about the patient. If recorded by one member of the clinical team as 'MDT outcome was progression', this is acceptable.

34.	Another scan?	Yes, No	If yes, MRI form recurs, if no, progress to 'Palliative Care'	<b>Radiology scans</b>	Any other MRI head scans that occur after previous scan.
Palliative Care					
35.	Enrolment in Palliative Care?	Yes, No	Required entry If Yes, date of enrolment. If no progress to Survival	Palliative care referral, clinic letters, hospice transfer	Has the patient been moved to a palliation treatment strategy at any point? Acceptable recognition this patient has entered a palliative care regime include: a palliative care referral, a clinic letter from oncology or neurosurgery stating the patient has entered a palliative care regime, prescription of anticipatory medications or a clinical note stating the patient care has been transferred to a hospice.
Validator Centre Questions					
36.	Palliative Care Regime	Community, Hospice, Hospital	Validator Centre patients who entered a palliative care regime only.	Palliative care referral, clinic letters, hospice transfer	What type of palliative care regimen did the patient enter?
Survival					
37.	Patient still alive?	Yes /No	Required entry If click No, date of death asked	<b>Clinic letters</b> , trust systems, NHS Spine	Is the patient recorded as still alive according to the last date of follow up.
38.	Date of death	Dd/mm/yyyy	Required entry	<b>Clinic letters</b> , trust systems, NHS Spine	Date of death as reported by Clinic letters, trust systems, or NHS Spine/other pertinent patient outcome registry.
39.	Date of last contact/follow up	Dd/mm/yyyy	Required entry	<b>Clinic letters</b> , trust systems, NHS Spine	Date of death as reported by Clinic letters, trust systems, or NHS Spine/other pertinent patient outcome registry.