



# *Candida albicans* and *Enterococcus faecalis* biofilm frenemies: When the relationship sours

Om Alkhir Alshanta<sup>a,1</sup>, Khawlah Albashaireh<sup>a,1</sup>, Emily McCloud<sup>a</sup>, Christopher Delaney<sup>a</sup>, Ryan Kean<sup>b</sup>, William McLean<sup>a</sup>, Gordon Ramage<sup>a,\*</sup>

<sup>a</sup> Glasgow Endodontology and Oral Sciences Research Group, Glasgow Dental School, School of Medicine, Dentistry and Nursing, College of Medical, Veterinary and Life Sciences, Glasgow, United Kingdom

<sup>b</sup> Department of Biological and Biomedical Sciences, School of Health and Life Sciences, Glasgow Caledonian University, Glasgow, United Kingdom

## ARTICLE INFO

### Keywords:

Interkingdom  
Biofilm  
*Candida albicans*  
*Enterococcus faecalis*  
Supernatant  
pH

## ABSTRACT

The opportunistic yeast *Candida albicans* and lactic acid bacteria *Enterococcus faecalis* are frequently co-isolated from various infection sites on the human body, suggesting a common interkingdom interaction. While some reports suggest an antagonism, the reason for their co-isolation therefore remains unclear. The purpose of this study was to undertake a detailed characterisation of this dual-species interaction. We used standard biofilm characterisation methodologies alongside an RNASeq analysis to assess the response of *C. albicans* to *E. faecalis*. We evaluated the relevance of pH to dual-species biofilm interactions and demonstrated that *E. faecalis* rapidly and significantly impacted *C. albicans* morphogenesis and biofilm formation, which was mirrored by levels of gene expression. These transcripts were enriched in amino acids biosynthesis and metabolism pathways in co-cultures, a finding that guided our investigation into pH related mechanism. We were able to demonstrate the direct role of *E. faecalis* induced low pH, which inhibited *C. albicans* hyphal morphogenesis and biofilm formation. The results suggest that the anti-candidal effect of *E. faecalis* is not based solely on a single mechanism, instead it may involve various mechanisms, which collectively reflects the complexity of interaction between *C. albicans* and *E. faecalis* and impacts treatment outcomes.

## 1. Introduction

*Candida albicans* biofilm infections are often polymicrobial, highlighting the importance of interkingdom interactions. These relationships may take the form of synergistic, antagonistic, or simply coexistence. It is well documented that *C. albicans* has the capacity to interact with various bacterial species, including *Staphylococcus aureus*, *Streptococcus mutans* and *Pseudomonas aeruginosa* [1–3]. Beyond the basis of these interactions, *C. albicans* influences the composition, virulence and dysbiosis of the bacterial microbiome [4–6]. Reciprocally, it has also been shown that *C. albicans* is in turn influenced by bacteria or bacterial products in terms of growth, virulence, resistance and phenotypic switch [7–9]. The pleomorphic fungus *C. albicans* and *Enterococcus faecalis* are opportunistic pathogens that colonize various niches of the human body, such as the skin, oral cavity, vagina and gastrointestinal tract [10–14].

Endogenous in nature, *C. albicans* and *E. faecalis* can become

pathogenetic due to impairment in host immunity or dysbiosis in microflora [15,16]. Infections caused by the opportunistic yeast *C. albicans* can range in severity from superficial oropharyngeal candidiasis to a serious life-threatening candidemia [17]. Likewise, translocation of *E. faecalis* from the gut to other body sites is associated with various infections, including endocarditis, meningitis, urinary tract infections and blood-stream fatal sepsis [16,18]. In particular, it has been observed that the oral microbiome of immunocompromised mice in oropharyngeal candidiasis model showed a shift towards *E. faecalis* dominance [19]. In the gut, *C. albicans* inoculated mice remained dominated by enterococci (mainly *E. faecalis*) compared with the non-infected candidal animals, in which the *Enterococcus* species were replaced by lactobacilli [20]. Therefore, it can be inferred that *C. albicans* and *E. faecalis* may favour the same ecological environment; or interact in a way that supports the survival of one another. Indeed, both microorganisms are frequently co-isolated from the root canals of the teeth and oral mucosa [21,22]. Notably, in endodontic literature

\* Corresponding author.

E-mail address: [gordon.ramage@glasgow.ac.uk](mailto:gordon.ramage@glasgow.ac.uk) (G. Ramage).

<sup>1</sup> Om Alkhir Alshanta and Khawlah Albashaireh contributed equally to this work.

these two pathogens are often considered the paradigm fungal and bacterial model to study, test and evaluate the effectiveness of endodontic antimicrobials or techniques [23–26].

A variety of environmental conditions and microbial molecules have been shown to influence *C. albicans* hyphal morphogenesis and biofilm formation [27]. These include nutrient source, stressors, such as pH and temperature, and direct and indirect bacterial interactions [28]. RNASeq has been extensively used to analyse how *C. albicans* responds under these circumstances, which has dramatically enhanced our understanding of the transcriptional profiles of *C. albicans* response to weak organic acids [29], growth media, oxidative and nitrosative stresses [30], *Lactobacillus* [31], *Streptococcus gordonii* [7], *Pseudomonas aeruginosa* quorum sensing molecules [32], amongst others. The interaction between *C. albicans* and *E. faecalis*, and more specifically the effect of *E. faecalis* and its supernatant on *C. albicans* morphogenesis, biofilm formation and virulence has been the subject of several investigations [18,33–40]. It was proposed that *E. faecalis* secretes an anti-candidal protein [40], and that it is the EntV bacteriocin that is specifically linked to the observed *C. albicans* inhibition [34]. Nevertheless, despite the well documented adverse effect of low pH and acid producing bacteria, such as lactobacilli, on *C. albicans* hyphal formation [31], the influence of the acidifying potential of the lactic acid bacterium *E. faecalis* remains largely unexplored. Therefore, the present *in vitro* study aimed to examine the phenotypic and transcriptomic biofilm interaction of *C. albicans* when co-cultured with *E. faecalis*. To the best of our knowledge this the first study that reveals *E. faecalis* induced changes in *C. albicans* biofilm transcriptome using RNA sequencing, and the impact that low pH has on this phenomenon.

2. Materials and methods

2.1. Microbial growth conditions and standardisation

All *C. albicans* and *E. faecalis* strains used in this study are listed in Table 1. *C. albicans* strains were incubated at 30 °C for 48 h on Sabouraud dextrose agar (SAB [Sigma–Aldrich, Dorset, UK]). *E. faecalis* strains were maintained on 5% v/v horse blood Columbia agar plate in 5% CO<sub>2</sub> at 37 °C for 24 h. *C. albicans* overnight cultures were grown in yeast peptone dextrose ([YPD - Sigma-Aldrich, Dorset, UK]) with shaking at 120 rpm in an orbital shaker (IKA KS 4000 i control, Berlin, Germany) at 30 °C. For *E. faecalis*, Brain Heart Infusion ([BHI] Sigma–Aldrich, Dorset, UK) with incubation in 5% CO<sub>2</sub> for 18 h at 37 °C was used. Cells were then harvested by centrifugation for 5 min at 3000 rpm and washed twice with PBS. Yeast cells were counted using a

hemocytometer and standardized to (1 × 10<sup>6</sup> yeasts/mL). Bacterial cells were standardized using a spectrophotometer at an OD<sub>600nm</sub> of 0.3 (~2 × 10<sup>8</sup> cells/mL).

2.2. Assessment of *Candida albicans* characteristics when co-cultured with *Enterococcus faecalis*

For phenotypic evaluation, *C. albicans* SC5314, high biofilm formers (HBF) and low biofilm formers (LBF) [49,50], and *E. faecalis* ER5/1, were standardized to 1 × 10<sup>6</sup> cells/mL for *C. albicans* and 1 × 10<sup>7</sup> cells/mL for *E. faecalis* in Todd-Hewitt broth (THB; Merck UK) supplemented with 10 mM menadione and 10 mg/mL hemin (Thermo Fisher). These were subsequently mixed 1:1 v/v with Roswell Park Memorial Institute (RPMI-1640 [Sigma–Aldrich, Dorset, UK]) (THB:RPMI), a media which has been shown to support the co-culture of *C. albicans* and bacterial species [51]. Mono-cultures of *C. albicans* and co-cultures of *C. albicans* with *E. faecalis* were created in a 24 well microtiter plates (Corning Incorporated, Corning, NY, USA) for 24 h in 5% CO<sub>2</sub> at 37 °C. After incubation, biofilms were washed with PBS and stained with 5 μM calcofluor white (Invitrogen, Paisley, UK), a stain which specifically stains the chitin and beta-glucans of fungal cell wall [52]. Biofilms were incubated in the dark for 20 min and excess stain was washed with sterile water. 2% paraformaldehyde was used for 1 h to fix the stained biofilms which were then imaged using EVOS FL Cell Imaging system (Thermo Fisher Scientific, Waltham, MA, USA). Biofilm biomass of the same biofilms was also quantified using crystal violet stain as previously described [53].

2.3. Quantitative analysis using quantitative PCR

Mono- and dual-species biofilms of *C. albicans* SC5314 and *E. faecalis* ER5/1 and E2 were grown as described above in 6 well microtiter plates for 4, 6, 8 and 24 h in 5% CO<sub>2</sub> at 37 °C. Biofilms were then removed by scraping into 1 mL of PBS before DNA extraction using QIAamp DNA mini kit, as per manufacturer’s instructions (Qiagen, Crawley, UK). For qPCR, a mastermix containing Fast SYBR GreenER™ (Thermo Fisher Scientific, Paisley, UK), forward/reverse primers (Table 2), and UV treated RNase-free water was prepared, to which extracted DNA was added. Standard curves for each strain were also included. The used thermal cycles were 50 °C for 2 min, 95 °C for 2 min, 40 cycles of 95 °C for 3 s and 60 °C for 30 s using Step-One plus real time PCR machine and StepOne software V2.3 (Life Technologies, Paisley, UK). Colony forming equivalents (CFE) was calculated in relation to each species standard curve, as previously described [54]. Data obtained is from triplicates from three independent experiments.

2.4. Gene expression analysis of *Candida albicans* genes and *Enterococcus faecalis* EntV gene

For assessment of *C. albicans* related genes, biofilms of *C. albicans* SC5314 alone or in co-culture with *E. faecalis* ER5/1 were developed for 2 h, as described above. For *E. faecalis* EntV gene expression, biofilms of 12 *E. faecalis* strains were grown for 4 h in THB:RPMI 5% CO<sub>2</sub> at 37 °C. After incubation, biofilms were removed by scraping, and RNA extracted using the MasterPure™ Yeast RNA Purification Kit (Cambio, Cambridge, UK) for yeast, as per the manufacturer’s protocol, and with a TRIzol extraction for bacteria (Thermo Fisher Scientific, Paisley, UK). Extracted RNA was converted to cDNA with a high-capacity cDNA reverse transcription kit (Thermo Scientific, Loughborough, UK). Real-time PCR was carried as described above. The list of primers for genes assessed are located in Table 2. Gene expression was analysed for *C. albicans* using ΔΔCT method, after normalising CT values to ACT1 housekeeping gene [55]. EntV gene expression in *E. faecalis* strains was calculated as a percentage of expression in relation to ΔΔCT of the housekeeping gene. No-reverse transcription samples were included. Data obtained is from triplicates from three independent experiments.

Table 1  
List of used *C. albicans* and *E. faecalis* strains.

C. albicans		E. Faecalis	
Name	Reference	Name	Reference
SC5314	[41]	ATCC-29212	[42]
BC023 (LBF)	[43]	NCTCC 5957	National Collection of Type Cultures, Public Health Laboratory Service ( <a href="http://www.phe-culturecollections.org.uk">www.phe-culturecollections.org.uk</a> ).
BC146 (HBF)		E1, E2, E3	
		ER5/1	
		ER35	
		OS-16	
		V583	
		OGX-1	
		J 42-7	
		AA-OR 34	[44]
			[45]
			GDS culture collection
			[44]
			[46]
			[47]
			GDS culture collection
			[48]

HBF = high biofilm former; LBF = low biofilm former; GDS = Glasgow Dental School.

**Table 2***C. albicans* and *E. faecalis* primers used for quantitative and real time qPCR.

Primer	Gene name	Sequence (5'–3')	Function
<i>C. albicans</i>	ITS	ITS3 - GCATCGATGAAGAACGCAGC ITS4 - TCCTCCGCTTATTGATATGC	
	ACT1	F - AAGAATTGATTGGCTGGTAGAGA R - TGCGCAGAAGATTGAGAAGAAGTTT	Housekeeping
	HWP1	F - GCTCAACTTATTGCTATCGCTTATTACA R - GACCGTCTACCTGTGGGACAGT	Hyphal wall protein
	ALS3	F - CAACCTGGGTTATTGAAACAAAAACA R - AGAAACAGAAACCCAGAACAACCT	Adhesion
	ECE1	F - GCTGGTATCATTGCTGATAT R - TTCGATGGATTGTTGAACAC	Hyphae specific protein
	YWP	F - TCCGGTTCTGGTTCTGATTC R - TACCGTGGACCGTAGTGACA	Yeast wall protein
	SAP2	F - GAATTAAGAATTAGTTTGGGTTTCAGTTGA R - CCACAAGAACATCGACATTATCAGT	Secreted aspartyl proteases
	SAP5	F - CCAGCATCTTCCCGCACTT R - GCGTAAGAACCGTCACCATATTTAA	Secreted aspartyl proteases
	PLB1	F - GGTGGAGAAGATGGCCAAAA R - AGCACTTACGTTACGATGCAACA	Phospholipase
	HSP90	F - GGTTGCTGATCAGTCCCAAGTT R - AACTTACCACCAGCGTTAGATTCC	Heat shock protein
	CDR1	F - GTACTATCCATCAACCATCAGCACTT R - GCCGTTCTTCCACCTTTTGTGA	Efflux pump
	MDR1	F - TCAGTCCGATGTCAGAAAATGC R - GCAGTGGGAATTTAGTAGATGACAA	Efflux pump
	ARG1	F - CTTTGGTTTGTGCCACTGGG R - TGCCGTTTCTCAGGTTGTGA	Arginine synthesis
	ARG3	F - TGCGTCTTCAACAACACACAC R - ATGATGCCGCTCCTTCAGTA	Arginine and citrulline biosynthesis
	CPA1	F - TGAAATGGTGCCTTGGTGGT R - AAACGTTCTGGTGTGTGCTGC	Arginine synthesis
	CPA2	F - TGCTCAAGGTGTGGTGGTTT R - TGGCATCACCGGAATGAACA	Arginine synthesis
	GPT1	F - CAGTTCGGCTGGTACCACTT R - CGATACTGACATCACCCCG	Transmembrane transporter activity
	AAP1	F - CTCGTCAACGGTCAACCAGA R - TGCGCTATTGGGGCATTACA	Transmembrane transport
<i>E. faecalis</i>	DDL	F - CAAACTG TTGGCATTCCACAA R - TGGATTTCCTTCCAGTC ACTTC	housekeeping
	EntV	F - AGCTGCACAAAGAAAGCCTG R - GCTTAGCCACATTGAACTGC	Secreted bacteriocin

## 2.5. Assessing the transcriptional response of *Candida albicans* to *Enterococcus faecalis*

Transcriptional analysis of *C. albicans* SC5314 in response to co-culture with *E. faecalis* ER5/1 was performed using RNA sequencing as previously described [31,56]. Briefly, *C. albicans* mono-cultures were grown in THB:RPMI media in T-75 cell culture flasks (Corning, USA) at a cellular density of  $10^6$  cells/mL for 4 h in 5% CO<sub>2</sub> at 37 °C. Next, biofilms were washed with PBS and *E. faecalis* in cellular density of  $10^7$  cells/mL was added for additional 2, 4, 20 h. After each time point, biofilms washed and scraped in 1 mL of RNeasy lysis buffer (Thermo Scientific, Loughborough, UK). RNA was extracted using RiboPure™ RNA purification kit for yeast (Thermo Scientific, Loughborough, UK). The quantity and quality of extracted RNA were evaluated using Bioanalyzer system. RNA samples were submitted to Edinburgh Genomics facility where RNA sequencing was performed using Illumina NovaSeq6000 sequencing platform. The obtained raw fastq reads were trimmed to remove adapters and poor-quality reads using Trimmomatic (V0.38). Reads were then aligned to a reference *C. albicans* genome (<http://www.candidagenome.org>) and the number of aligned reads per gene were counted. Differential expression analysis was then performed using DESeq2 in RStudio which also used to generate principal component analysis (PCA), volcano and heatmap plots.

To further evaluate transcriptional changes based on key findings, amino acid biosynthesis/metabolism related gene expression were analysed using RT-PCR. In this experiment, *C. albicans* SC5314 was grown in THB:RPMI in 6 well plates in 5% CO<sub>2</sub> for 4 h. After incubation, supernatant was removed, and biofilms were washed with PBS.

*E. faecalis* ER5/1 suspended in 3 different media conditions was then added to *C. albicans* biofilms. The media conditions used were THB:RPMI, THB:RPMI supplemented with amino acids (Sigma-Aldrich, Dorset, UK) and THB:RPMI supplemented with glucose (Sigma-Aldrich, Dorset, UK). Amino acids (L-glutamine, L-arginine and L-histidine) were added to THB:RPMI to reach a final concentration of 0.03, 0.4 and 0.6 g/L respectively. The final glucose concentration in THB:RPMI with glucose was 5 g/L. Supplemented media without *E. faecalis* was also added to *C. albicans* biofilms for mono-species biofilms. After incubation for an additional 2 h in 5% CO<sub>2</sub> at 37 °C, biofilms washed, removed by scraping, RNA extracted and RT-PCR performed as described above using primers specific for ARG1, ARG3, CPA1, CPA2, GPT1 and AAP1 genes (Table 2).

## 2.6. Assessment of *Candida albicans* biofilm biomass with *Enterococcus faecalis* supernatant

Cell free supernatant from 12 *E. faecalis* strains was obtained by growing *E. faecalis* to a cellular density of  $1 \times 10^7$  cells/mL in THB:RPMI in T-15 cell culture flasks (Corning, USA) for 24 h in 5% CO<sub>2</sub> at 37 °C. Supernatant was centrifuged at 4000 rpm for 5 min before filtering with 0.2 µm syringe filter (Sartorius™ Minisart®, Fisher Scientific, Loughborough, UK). Next, a 9:1 v/v of supernatant to 10 times concentrated RPMI (10 × RPMI) media was then used to grow *C. albicans* SC5314, HBF and LBF in 24 well plate for 24 h in 5% CO<sub>2</sub> at 37 °C (10 × RPMI was used to ensure any effects were not a result of nutrient depletion). Following incubation, biofilms were washed with PBS and dried at room temperature overnight. The biofilm biomass of the dry biofilms assessed

with crystal violet stain.

Next, *E. faecalis* E2, ER5/1 and V583 were selected based on their differential level of *EntV* expression. *E. faecalis* supernatant from these strains was ultrafiltered using Amicon Ultra-0.5 Centrifugal Filter Unit with 3 kDa NMWCO pore size (Merck Life science, Gillingham, UK). As *E. faecalis* *EntV* was indicated to be larger than 3–10 kDa [34], the 3 kDa pore size was selected to ensure removal of any proteins larger than 3 kDa NMWCO from the supernatant. Following ultrafiltration, both normal and ultrafiltered supernatant were boiled for 10 min at 100 °C to heat inactivate any active proteins in the supernatant. Afterwards, the supernatant from each condition was mixed with 10 × RPMI at 9:1 ratio and used to grow *C. albicans* SC5314, HBF and LBF, as described above. The pH of each supernatant was also measured using pH meter (Fisher Scientific, Loughborough, UK). *C. albicans* biofilm biomass was assessed as described above.

## 2.7. pH modification of *Enterococcus faecalis* supernatant and growth media

The pH of *E. faecalis* E2, ER5/1 and V583 supernatant was quantified and shown to be ~5 for all three strains. The pH of the supernatant was then adjusted to 6.0 and 7.0 using 1 M sodium hydroxide. The pH of THB:RPMI (normally has pH of 7.0) was also adjusted to 5.0 and 6.0 using 35% hydrochloric acid (Sigma–Aldrich, Dorset, UK) and 90% lactic acid (Sigma–Aldrich, Dorset, UK). pH modified supernatant was mixed with 10 × RPMI and used along with pH modified media to grow *C. albicans* SC5314, HBF and LBF. *C. albicans* biofilm biomass was assessed as described above.

## 2.8. Assessment of *Enterococcus faecalis* inhibition of *Candida albicans* hyphal morphogenesis

Mono- and dual-cultures of *C. albicans* SC5314, HBF, LBF and *E. faecalis* E2, ER5/1 and V583 were prepared, as described above. Biofilms were washed with PBS and stained and imaged with calcofluor white at 2, 4, 6, 8 and 24 h, as described above. The pH of supernatant from each biofilm at the indicated time were also measured.

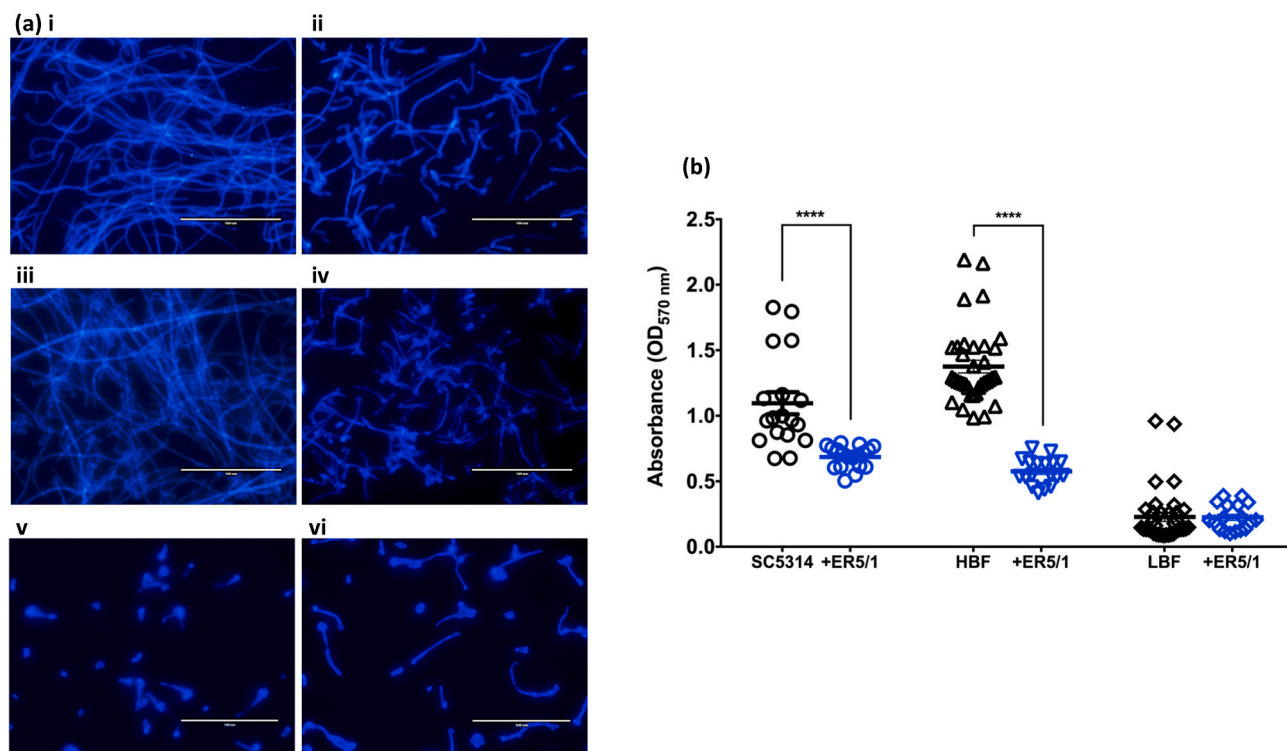
## 2.9. Statistical analysis

Figures and statistical analysis were performed using GraphPad Prism (version 7.0 d, GraphPad, La Jolla, CA, USA). To compare data sets and calculate significance, non-parametric Kruskal–Wallis test with Dunn's multiple comparison test was used. The ClueGO application in Cytoscape (Version: 3.8.0) software was used to generate gene ontology networks.

## 3. Results

### 3.1. *Enterococcus faecalis* impacts biomarkers of *Candida albicans* biofilms

First, we investigated the general effect of *E. faecalis* on *C. albicans* hyphal morphogenesis, biofilm formation, growth, and expression of key genes related to biofilm formation, virulence and drug resistance. *C. albicans* SC5314, HBF and LBF were grown in mono-species biofilms or co-cultured with *E. faecalis* ER5/1 for 24 h. As reported by various studies [33,34,36,38,39], *C. albicans* hyphal morphogenesis was shown to be clearly inhibited in co-cultures, as shown in calcofluor stained images (Fig. 1a). *C. albicans* SC5314 (panel a [i]) and HBF (panel a [iii])



**Fig. 1.** *E. faecalis* inhibits *C. albicans* hyphal morphogenesis and biofilm formation in *in vitro* coculture. (a) *C. albicans* laboratory strain SC5314 (i, ii), HBF clinical isolates BC146 (iii, iv) and LBF clinical isolate BC023 (v, vi) were grown in THB:RPMI media in mono-culture (i, iii, v) or in co-culture with *E. faecalis* strain ER5/1 (ii, iv, vi) for 24 h. Biofilms were stained with calcofluor white. Scale bars are 100 μm. (b) *C. albicans* biofilm biomass measured using crystal violet stain after 24 h of incubation in mono-culture and with ER5/1 supernatant supplemented with 10x RPMI. Statistical significance was presented as \*\*\*\*p < 0.0001. Data obtained from triplicates of three independent experiments. (For interpretation of the references to colour in this figure legend, the reader is referred to the Web version of this article.)

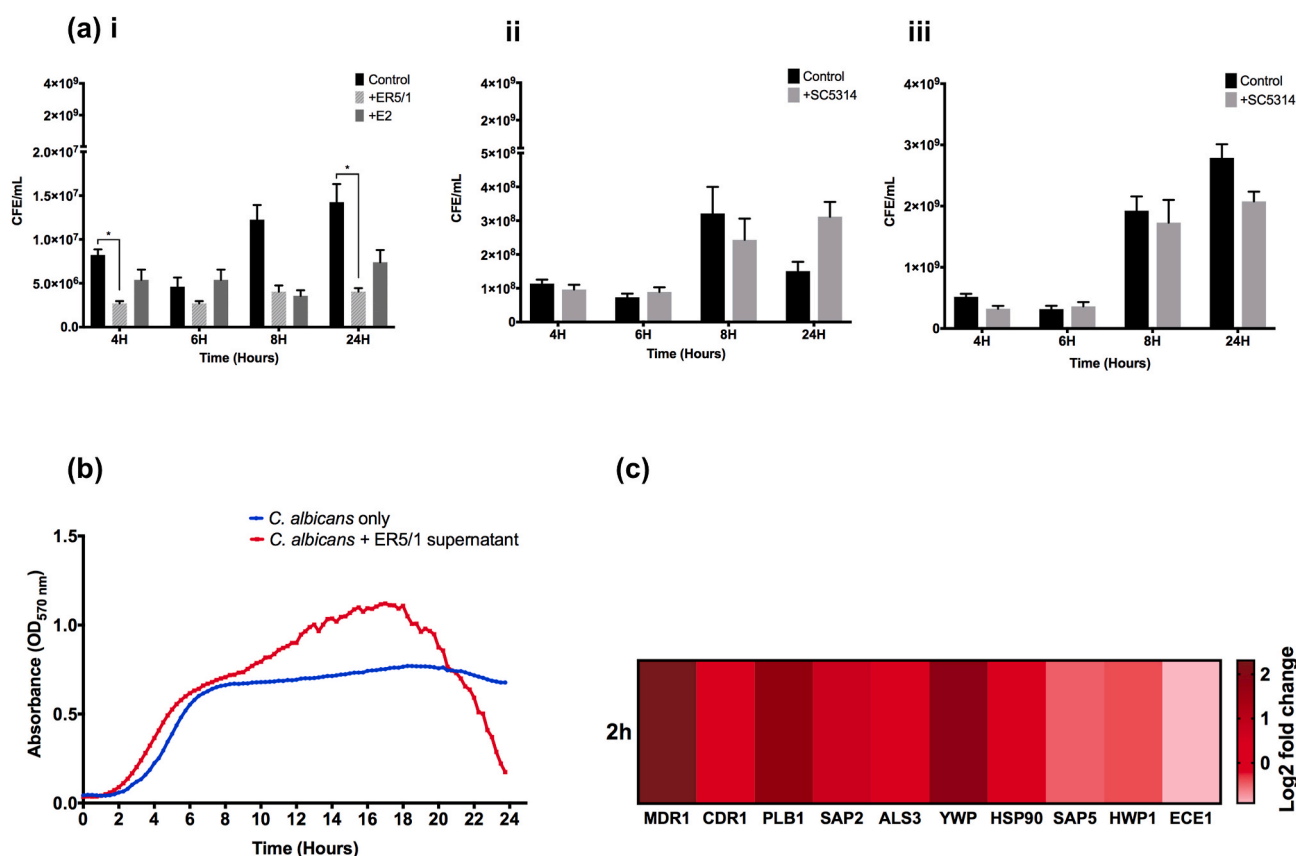


are known for their ability to form dense biofilm with tangled networks of hyphae [57,58]. This was obvious in mono-species biofilms, though in the presence of *E. faecalis*, less abundant and shorter hyphae are evident (panel a [ii], [iv]). The phenotype of *C. albicans* LBF (panel a [v], [vi]) remained unaltered. This phenotype of *C. albicans* usually grows in yeast form with occasional hyphae, therefore, it was not influenced by *E. faecalis*. To assess the effect of *E. faecalis* on *C. albicans* biofilm biomass, cell free *E. faecalis* supernatant supplemented with  $10 \times$  RPMI was used instead of live *E. faecalis* to ensure that the measured biofilm biomass is purely *C. albicans* biomass. *E. faecalis* supernatant was reported to have similar inhibitory effect on *C. albicans* as live *E. faecalis* [33]. The biofilm biomass, assessed using crystal violet assay, showed that *E. faecalis* supernatant significantly inhibited biofilm formation of *C. albicans* SC5314 and HBF compared with *C. albicans* only biofilms. Again, LBF remained unaffected (Fig. 1b).

Next, qPCR analysis was used to further quantify cell numbers during these interactions. *E. faecalis* was confirmed to inhibit the growth of *C. albicans* SC5314 compared with mono-species (Fig. 2a). This inhibition was notably more significant with *E. faecalis* ER5/1 than with that of E2. Whereas, the growth of *E. faecalis* remained unaffected by the presence of *C. albicans*, as there was no significant difference in *E. faecalis* CFE/mL between mono- and dual-species cultures at all time points for both strains, although there was a trend toward increased growth of ER5/1 in co-cultures at 24 h. Similar growth inhibition was observed in the kinetic growth curve of *C. albicans* grown in *E. faecalis* supernatant compared with *C. albicans* only at 24 h (Fig. 2b). The growth kinetics of *C. albicans* was characterised by steadily increasing growth up to 8 h, followed by a plateau where the growth remained stable over the

remaining hours. *C. albicans* grown with *E. faecalis* supernatant showed a higher growth rate between the 8 and 20 h, after which the growth decreases sharply at 24 h compared with *C. albicans* only control. This matches the growth inhibition observed in qPCR analysis at 24 h in Fig. 2a(i).

At the single transcript level, co-culturing *C. albicans* SC5314 with *E. faecalis* ER5/1 resulted in down-regulation of the hyphal related genes *HWP1* and *ECE1* in relation to *C. albicans* only at 2 h. Conversely, the adhesion gene *ALS3* was upregulated, which may indicate that *E. faecalis* affects hyphal formation of *C. albicans* without affecting its adhesion to surfaces (Fig. 2c). *SAP5* encoding *SAP5* enzyme, which are expressed upon hyphal formation [59], is also downregulated in dual-species biofilms. In contrast, *SAP2* and *YWP*, yeast typical genes, were upregulated. The gene expression patterns support the above-mentioned inhibition levels observed microscopically and by crystal violet assay. In addition, the effect of *E. faecalis* on *C. albicans* virulence was assessed using genes encoding proteolytic enzymes, *PLB1* and *SAP2* and those associated with drug resistance *CDR1*, *MDR1* and *HSP90*. The upregulation of the genes *PLB1* and *SAP2* indicates enhanced virulence of *C. albicans* via the increase in proteolytic enzymes activities in the dual-species biofilms. Similarly, the efflux pump genes, *CDR1*, *MDR1* and *HSP90*, which are directly linked to drug resistance were also upregulated. This upregulation in efflux pumps expression may refers to *C. albicans* attempt to remove intracellular toxic substances produced by *E. faecalis*, such as quorum sensing molecules, bacteriocins or metabolites. Overall, the above analysis indicates that *E. faecalis* inhibits *C. albicans* hyphal morphogenesis, biofilm formation and growth, while positively affecting enzymatic activity and drug resistance.



**Fig. 2.** *E. faecalis* inhibits *C. albicans* growth and induce change in *C. albicans* SC5314 genes associated with biofilm, virulence and resistance. (a) The growth of *C. albicans* SC5314 (i) *E. faecalis* ER5/1 (ii) and *E. faecalis* E2 (iii) in mono- and dual-species was assessed using qPCR at 4 h, 6 h 8 h and 24 h. Statistical significance was presented as \*  $p < 0.05$ , \*\*\*\* $p < 0.0001$ . (b) 24 h kinetic growth curve of *C. albicans* SC5314 only (blue) and *C. albicans* cultured in *E. faecalis* ER5/1 supernatant (red) at 570 nm absorbance (c) Heatmap of *C. albicans* SC5314 genes associated with biofilm, virulence and resistance was measured in mono-culture and in presence of *E. faecalis* at 2 h. Control = *C. albicans* only biofilms. Data shown is the mean log fold change relative to mono-species biofilms. Results represent data from three independent experiments. (For interpretation of the references to colour in this figure legend, the reader is referred to the Web version of this article.)

3.2. Transcriptomic analysis of *Candida albicans* response to *Enterococcus faecalis* demonstrated the importance of early interactions

We have shown *E. faecalis* to have a significant effect on various biological functions of *C. albicans*. In order to gain a more comprehensive overview of the molecular mechanisms of this interaction, a whole transcriptome sequencing (RNA-Seq) approach was employed. For this purpose, *C. albicans* SC5314 as mono-cultures and as co-cultures with *E. faecalis* ER5/1 were prepared at 2, 4 and 20 h, after the addition of *E. faecalis* to 4 h *C. albicans* biofilms, to enable a temporal analysis. This approach enabled us to capture gene expression levels at early, intermediate and late time points of microorganisms' interaction.

The principal component analysis demonstrates the level of variance between *C. albicans* mono- and co-cultures at the different time points (Fig. 3a). The variance in clustering was the highest at 6 h (*E. faecalis* was added to 4 h pre-established *C. albicans* biofilms and samples were harvested after 2 h of further incubation). This indicates that *C. albicans* shows a quick transcriptional response to *E. faecalis*. The degree of variance then decreased at 8 and 24 h. Therefore, the subsequent analysis was focused on 6 h time point. In total, 186 genes were significantly and differentially expressed between mono- and dual-species biofilms at 6 h (with cut-off of 1.5 for fold change and 10e-3 for p-adjusted value). Of these, 112 genes were upregulated in dual-species and 74 were downregulated (Fig. 3b). The top 50 differentially expressed genes are shown in Fig. 3c, accompanied by a list of the top 10 upregulated genes in *C. albicans* mono- and co-cultures, and their function (if known) are shown in Table 3. However, most of these genes are of unknown function and were not involved in the enriched biological pathways within the subsequent enrichment analysis. The full list of all significantly differentially expressed genes in *C. albicans* mono- and dual-species biofilm are available in Table S1.

Table 3

List of the top 10 upregulated genes in *C. albicans* mono- and dual-species biofilms at 6 h.

	Gene ID	Gene Name	P value (adj)	Log2FC
Up in <i>C. albicans</i> mono-species biofilms	CR_03580C_A	CR_03580C_A	0.00140825	-5.9714945
	CR_04510W_A	HXX2	4.07E-15	-5.4994791
	C2_01000W_A	HGT7	4.44E-05	-5.436272
	C3_01540W_A	C3_01540W_A	8.47E-05	-4.7324912
	C4_00450C_A	PGA10	4.08E-07	-4.3971164
	C4_04720W_A	C4_04720W_A	9.05E-09	-4.1599839
	C1_07160C_A	C1_07160C_A	0.00283371	-4.1157133
	CR_07170W_A	CR_07170W_A	2.39E-06	-4.0613455
	C6_00150W_A	ARD	2.09E-09	-4.0025723
	CR_01910C_A	CR_01910C_A	0.02841275	-3.8845479
Up in <i>C. albicans</i> - <i>faecalis</i> dual-species biofilms	C4_05580C_A	C4_05580C_A	1.65E-13	14.967598
	C1_02520W_A	SCW4	2.64E-22	14.6848791
	C1_13080W_A	OP4	5.11E-18	14.2265626
	C1_07580C_A	PRY1	4.27E-13	12.9814901
	C1_05890W_A	C1_05890W_A	2.05E-18	12.4438686
	C2_09800C_A	C2_09800C_A	2.21E-13	12.1176629
	CR_10320W_A	CR_10320W_A	1.21E-07	12.052965
	C2_02230C_A	C2_02230C_A	6.16E-19	11.4784176
	C6_00070C_A	PGA25	8.75E-26	10.9038636
	C1_09580C_A	LIP1	0.04085374	10.6107591

3.3. Amino acid biosynthesis and metabolism genes are upregulated by *Enterococcus faecalis*, regardless of glucose and amino acids concentration in the media

Gene ontology (GO) term analysis was then carried out to investigate the biological functions of the differentially expressed genes in mono- and dual-species biofilms. The upregulated genes in the dual-species

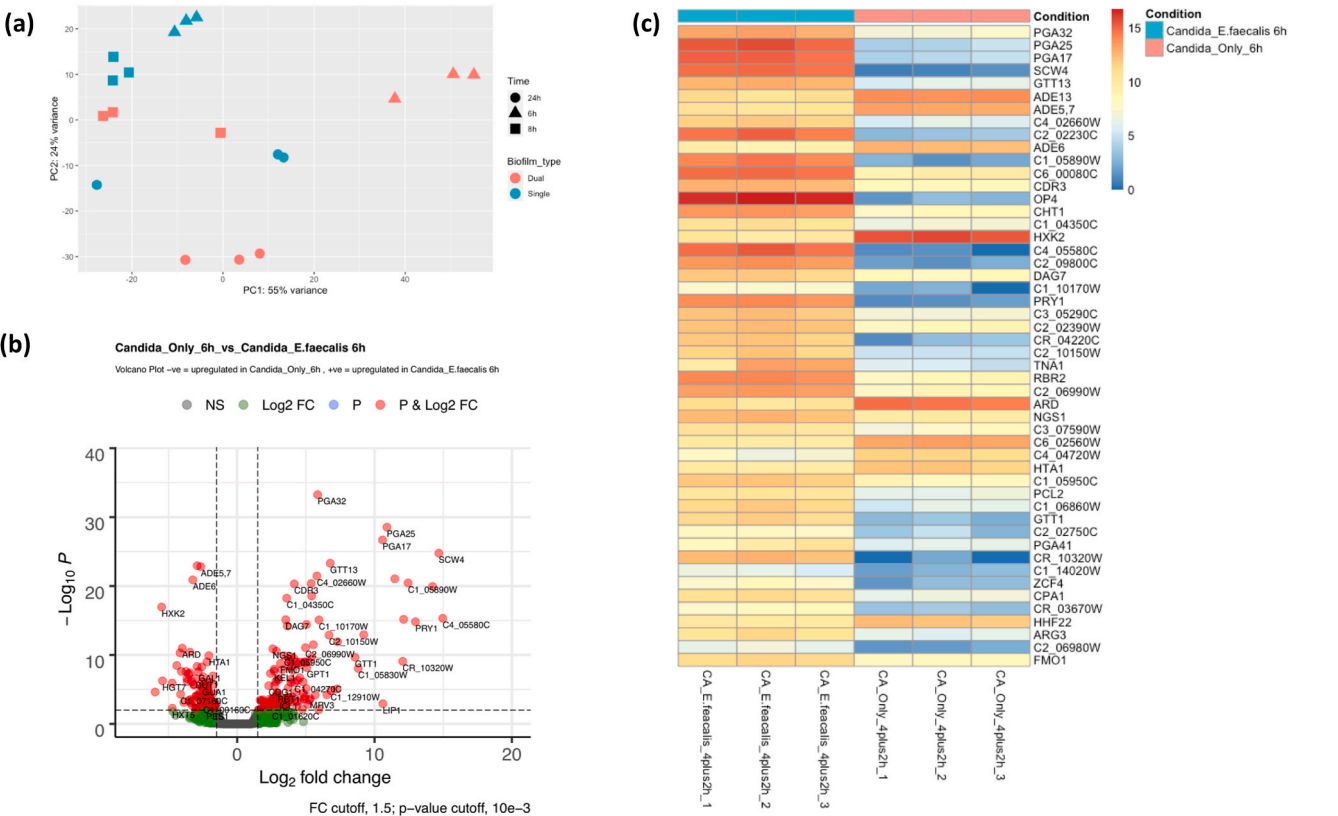


Fig. 3. Overview of the transcriptomic analysis of *C. albicans* SC5314 with *E. faecalis* ER5/1 at 4h, 6h and 24h. (a) The principal component analysis of data at all time points. (b) Volcano plot of the significantly differentially expressed genes of mono- and dual-species at 6 h. Genes located on the negative x-axis are the up regulated genes in mono-species biofilms. Genes on the positive x-axis are the up regulated genes in dual-species biofilms. (c) Heatmap of the top 50 significantly differentially expressed genes of mono- and dual-species biofilms at 6 h.

were mainly responsible for amino acids biosynthesis/metabolism and transmembrane transport activity (Fig. 4a). For the downregulated genes, the main biological functions enriched were purine nucleotide inosine monophosphate (IMP)/nucleotides/purine related biosynthetic processes (Fig. 4b). A simple presentation of the GO term analysis is illustrated in Fig. S1. The increased amino acid uptake, biosynthesis and metabolism in response to *E. faecalis* can be an indication of amino acids or glucose starvation or a stress response. It was also evident that *C. albicans* down-regulated the purine nucleotide biosynthesis pathway, an essential precursor for the nucleic acids DNA and RNA [60]. This may indicate an inhibition in *C. albicans* growth when co-cultured with *E. faecalis*, as shown previously in (Fig. 2a and b).

Next, we aimed to investigate whether the up-regulated amino acid biosynthesis and metabolism was a result of *E. faecalis* induced amino acids or glucose starvation. To achieve this, *C. albicans* SC5314 was grown in THB:RPMI media for 4 h. Afterwards, *E. faecalis* was standardised to the desired cellular density in either THB:RPMI only, THB: RPMI supplemented with amino acids or with glucose and added to *C. albicans* biofilms. *C. albicans* mono-species biofilms with the three different media were also included. After additional incubation of 2 h, mono- and dual-species biofilms were analysed for the expression of amino acids biosynthesis and metabolism genes; *ARG1*, *ARG3*, *CPA1*, *CPA2* and transmembrane transport related genes *GPT1* and *AAP1*. Despite supplementation with amino acids and glucose, all the investigated genes were still upregulated in all the conditions in the dual-species biofilms (Fig. 4c). However, the level of expression of all genes was the highest in THB:RPMI media and lower in glucose supplemented THB:RPMI. Furthermore, the *CaGcn4* gene, *C. albicans* functional homologue of *S. cerevisiae* *Gcn4*, which mediates *C. albicans* response to

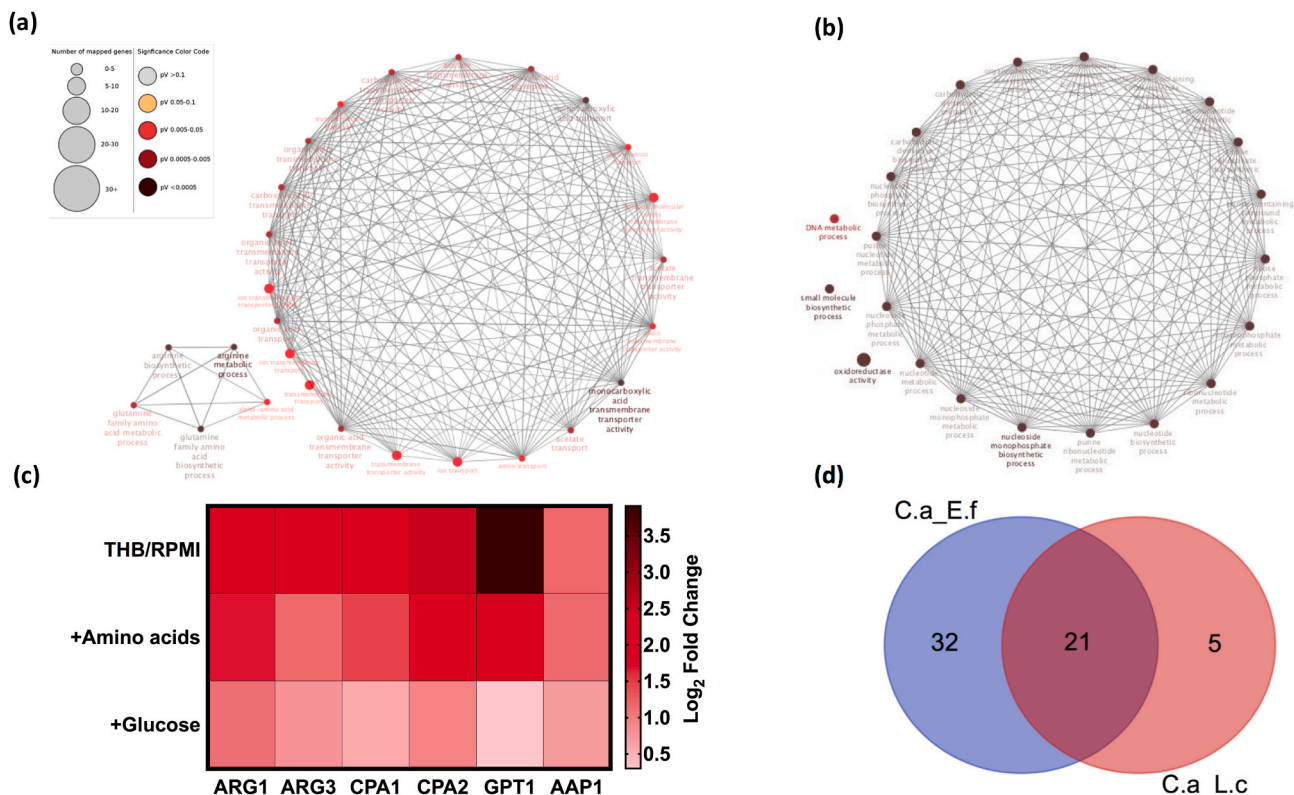
amino acids starvation [61], was not upregulated at any time point, as indicated in RNASeq analysis. These findings suggest that increased amino acid uptake, biosynthesis and metabolism is not caused by amino acids starvation, but instead, it is a direct stress response to *E. faecalis*, its released products, or the environment that it generates.

As recently published by our group [31], amino acid biosynthesis and breakdown related genes were also upregulated in dual-species biofilms of *C. albicans* and *L. crispatus* at 24 h. Indeed, there was 21 shared genes that were upregulated by both *E. faecalis* and *L. crispatus* at 24 h (Fig. 4d). Of note, the transcriptional response of *C. albicans* to *L. crispatus* was delayed (at 24 h) compared to its early response to *E. faecalis* (at 6 h).

Moreover, 10 out of 27 of the enriched GO biological processes in our dual-species biofilms, and 20 out of 22 of the enriched GO biological processes in our mono-species biofilms are also enriched in response to the weak organic acids [29]. In addition, many genes involved in arginine and lysin biosynthesis were induced in *C. albicans* under mild oxidative stress [7,30,62]. Considering that *E. faecalis* is a lactic acid bacteria [63], the similarities observed in *C. albicans* transcriptional response to *E. faecalis*, *L. crispatus*, and weak organic acids, and the fact that acidic environment favours yeast growth [64–66], then we hypothesized that *C. albicans* biofilm and hyphal morphogenesis inhibition observed in dual-species biofilms is pH dependant phenomenon.

#### 3.4. *Enterococcus faecalis* induced *Candida albicans* biofilm formation inhibition is not dependent on bacteriocin EntV expression

*E. faecalis* inhibition of *C. albicans* hyphal morphogenesis, biofilm formations and virulence are reported in various studies [33,34,36,38,



**Fig. 4.** Gene ontology (GO) enrichment analysis of significant biological, cellular, and molecular functions of mono- and dual-species biofilms at 6h. Amino acids biosynthesis/metabolism and purine related biosynthesis *C. albicans* genes expression in mono- and dual-species biofilms at 6 h. (a) Enriched biological processes within the upregulated genes in dual-species biofilms. (b) Enriched biological processes within the upregulated genes in mono-species biofilms with  $\geq 10$  associated genes. Only enriched pathways of a significant  $\leq 0.05$  are displayed. (c) Heatmap of key Amino acids biosynthesis/metabolism and transmembrane transport *C. albicans* genes in THB:RPMI media (media), THB:RPMI supplemented with glucose (+Glucose) or THB:RPMI supplemented with amino acids (+Amino acids) at 6 h. Data shown is the mean log fold change relative to mono-species biofilms. (d) Number of the unique and overlapped genes that are upregulated at 24 h in *C. albicans* co-cultured with *E. faecalis* or with *L. crispatus*.

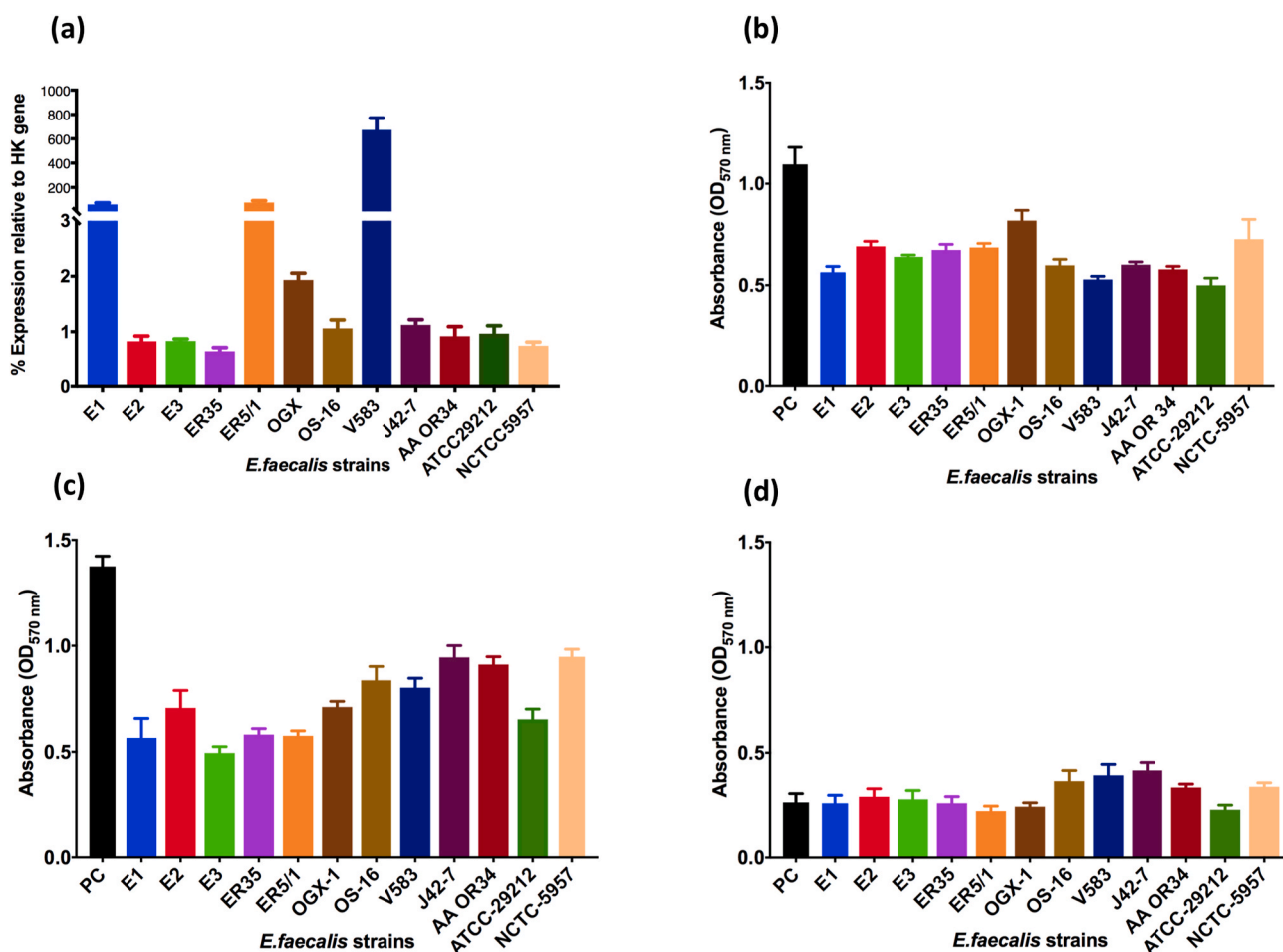
39]. However, few investigated the mechanism of this interaction. Shekh and Roy (2012) first characterized and purified an anti-candida protein produced by *E. faecalis*, which was heat stable up to 90°C with molecular weight of approximately 43 KDa [40]. Graham and colleagues (2017) also identified the bacteriocin EntV produced by *E. faecalis* as a potent inhibitor of *C. albicans* biofilm formation and virulence [34]. Therefore, we investigated the expression of *EntV* gene in 12 different *E. faecalis* strains and correlated the level of *EntV* expression with the degree of *C. albicans* biofilm inhibition, as quantified by the crystal violet assay. There was a wide variation in the expression of EntV among the screened *E. faecalis* strains at 4 h (Fig. 5a). *E. faecalis* V583, showed the highest level of expression, followed by *E. faecalis* E1 and ER5/1. All other *E. faecalis* strains showed comparable expression levels. The inhibition of biofilm from *C. albicans* SC5314 (Fig. 5b), HBF (Fig. 5c) and LBF (Fig. 5d) was then assessed using the cell free supernatant from the 12 *E. faecalis* strains. Here the biomass inhibition was not correlated with the quantified *EntV* expression, and there was not a statistically significant difference in *C. albicans* biomass inhibition induced by the different *E. faecalis* strains. Moreover, the linear regression analysis showed that there is no correlation between the level of *EntV* expression of different *E. faecalis* strains and the biofilm biomass of *C. albicans* grown in the supernatant of the corresponding *E. faecalis* strains (Fig. S4).

In order to further investigate the effect of the EntV peptide on

*C. albicans*, we employed ultrafiltration membranes with 3kD cut-off (EntV was identified as a 7.2-kDa peptide) [34] and heat inactivation of *E. faecalis* supernatant. We aimed to separate any proteins larger than 3kD and heat inactivate the supernatant. *E. faecalis* E2, ER5/1 and V583 were selected for the subsequent analysis based on their variation in *EntV* expression. The supernatant was then used in combination with 10x RPMI to grow *C. albicans*. Despite the ultrafiltration and the heat inactivation of *E. faecalis* supernatant, a significant inhibition in *C. albicans* biofilm biomass still evident in SC5314 (Fig. 6a) and HBF (Fig. 6b). Furthermore, ultrafiltration resulted in increased inhibition compared with normal supernatant in *C. albicans* SC5314 and HBF. Of note, the pH of the normal, ultrafiltered and heat inactivated supernatant was similar around 5.45 before incubation with *C. albicans* (Fig. S2). *C. albicans* is known for its ability to raise extracellular pH [67], and since the RPMI used in this work was unbuffered, the pH of all the conditions increased to around 6–6.3 after 24 h of incubation. Despite this rise in pH, the conditions remained in the acidic range and the biofilm biomass of *C. albicans* SC5314 and HBF was significantly lower in all supernatant containing conditions compared with the *C. albicans* only controls.

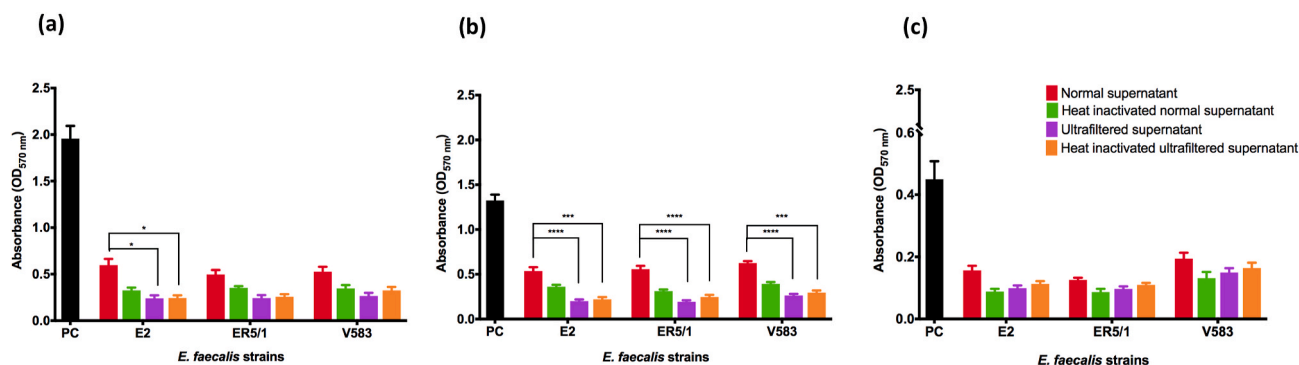
### 3.5. *Candida albicans* biofilm inhibition is pH dependent

As suggested above, we aimed to investigate the effect of *E. faecalis*



**Fig. 5.** Inhibition of *C. albicans* hyphal morphogenesis when cocultured with *E. faecalis* is not dependent on bacteriocin *EntV* expression. (a) Percentage of *EntV* expression in 12 *E. faecalis* strains relative to *ddl* housekeeping gene at 4 h with real time qPCR. The expression of *ddl* housekeeping gene was stable cross all the 12 *E. faecalis* strains with a variation only 2 cycle threshold (Ct) values. (b–d) Cell free *E. faecalis* supernatant obtained from 24 h incubation of E2, ER5/1 or V583 in THB-RPMI was supplemented with 10x RPMI. *C. albicans* biofilm biomass of the mono-culture (control) and *C. albicans* grown in 12 *E. faecalis* strains supernatant was assessed by crystal violet at 24 h (a) SC5314 (b) HBF (BC146) (c) LBF (BC023). Data obtained from triplicates of three independent experiments. (For interpretation of the references to colour in this figure legend, the reader is referred to the Web version of this article.)

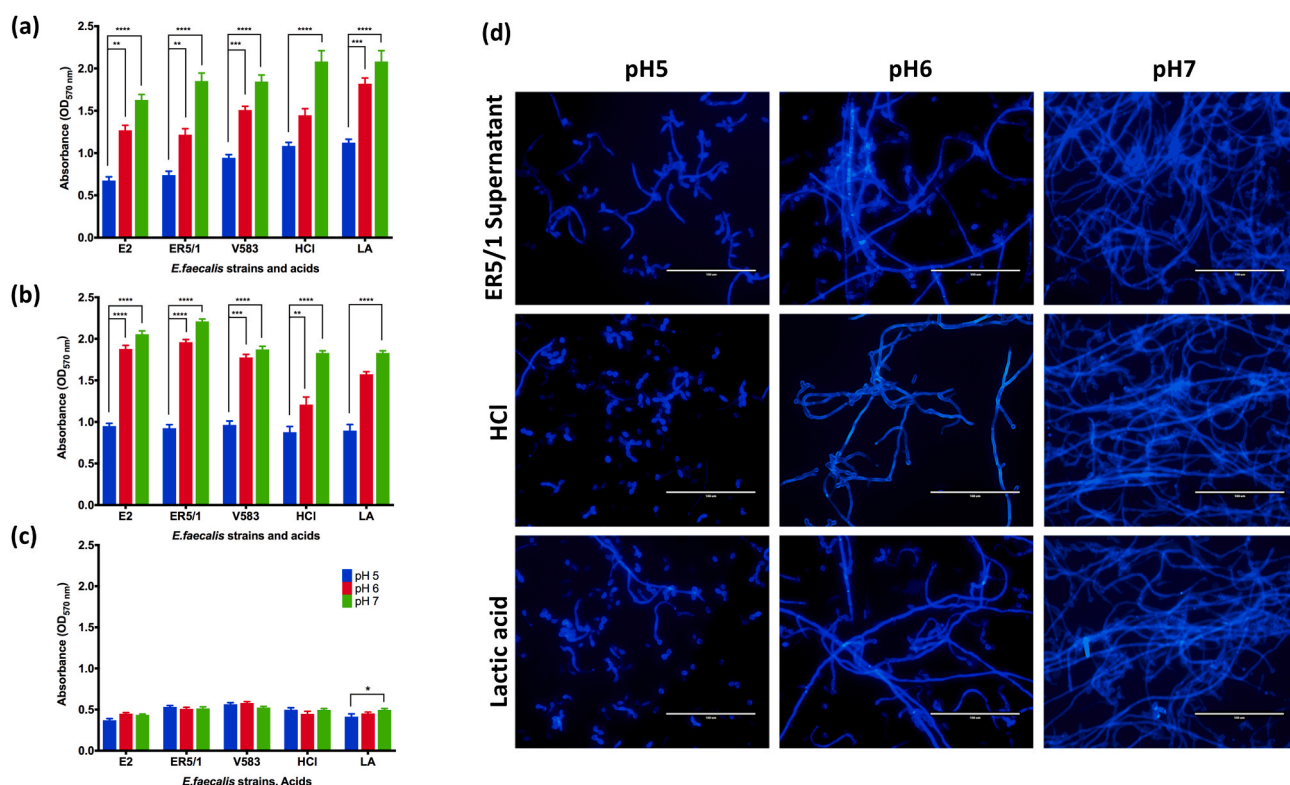




**Fig. 6.** Inhibition of *C. albicans* biofilm formation by *E. faecalis* normal, ultrafiltered and boiled supernatant. *C. albicans* biofilm biomass of the mono-culture (control) and *C. albicans* grown in *E. faecalis* E2, ER5/1 and V583 supernatant supplemented with 10x RPMI as assessed by crystal violet at 24 h. Four types of each strain supernatant were used; normal, boiled, ultrafiltered and boiled ultrafiltered supernatant (a) SC5314 (b) HBF (c) LBF. Statistical significance was presented as \*  $p < 0.05$ , \*\*\* $p < 0.001$ , \*\*\*\* $p < 0.0001$ . Results represent data from three independent experiments. PC = *C. albicans* only control. (For interpretation of the references to colour in this figure legend, the reader is referred to the Web version of this article.)

supernatant pH on *C. albicans* hyphal morphogenesis and biofilm formation. Firstly, we measured the pH of the *E. faecalis* cell free supernatant obtained from 24 h *E. faecalis* biofilms grown in THB:RPMI media. The pH of the supernatant was approximately 5.0. The pH of this supernatant and THB:RPMI media was then modified to different pH levels. Following the growth of *C. albicans* in various pH conditions, the biofilm biomass was assessed. Interestingly, there was a positive correlation between raising the pH of the *E. faecalis* supernatant and increased *C. albicans* biofilm biomass of SC5314 and HBF (Fig. 7a and b, respectively). *C. albicans* biofilm biomass was also increased with a pH rise of in pH modified media. In all conditions tested, the biomass was

significantly higher at pH 7.0 compared to that of pH 5.0. More importantly, *E. faecalis* supernatant showed a similar effect trend on *C. albicans* biofilm formation to that of the pH modified media at the same pH value. This similarity is further phenotypically confirmed using calcofluor white images of the same conditions (Fig. 7d). More abundant and longer *C. albicans* hyphae can be observed with the rise in pH of both the ER5/1 supernatant and the media. As shown, with pH 5.0, yeast is the predominant phenotype of *C. albicans*. With pH increase to 6.0, more hyphae are evident, which becomes the dominant phenotype at pH 7.0. The biofilm biomass of LBF was not affected by pH modification of the supernatant and media except for lactic acid modified media, in which



**Fig. 7.** The effect of pH modified *E. faecalis* supernatant and acid modified media on *C. albicans* biofilm biomass. Cell free *E. faecalis* supernatant of E2, ER5/1 or V583 supplemented with 10x RPMI used with its original pH 5 or adjusted to pH 6 and pH 7 using NaOH. THB:RPMI media also used at its normal pH 7 or adjusted to pH5 and pH6 using hydrochloric acid (HCl) or lactic acid (LA). pH modified supernatant and media was used to grow *C. albicans* SC5314 (a) HBF (b) and LBF (c) for 24 h and biofilm biomass assessed using crystal violet. (d) *C. albicans* SC5314 biofilms stained with Calcofluor white following incubation in the above-mentioned conditions for 24 h. Scale bars are 100  $\mu$ m. Statistical significance was presented as \*  $p < 0.05$ , \*\* $p < 0.01$ , \*\*\* $p < 0.001$ , \*\*\*\* $p < 0.0001$ . Results represent data from three independent experiments. (For interpretation of the references to colour in this figure legend, the reader is referred to the Web version of this article.)

the biofilm biomass was significantly higher in pH 7.0 compared with pH 5.0 (Fig. 7c). These observations indicate the potential role of *E. faecalis* supernatant pH on *C. albicans* hyphal morphogenesis and biofilm formation.

### 3.6. *Enterococcus faecalis* induced pH drop correlates with inhibition of *Candida albicans* hyphal morphogenesis

To gain insight into the chronology of *C. albicans* hyphal and biofilm formation in mono- and dual-species cultures with *E. faecalis*, the biofilm of both conditions is stained and imaged at 2, 4, 6, 8 and 24 h. The pH of the supernatant of each condition was also measured at the corresponding time points. It was shown that *C. albicans* starts to form germ tubes at the first hour of incubation in both conditions when the pH was 7.0 (Fig. 8). No differences were observed between the two conditions at 2 h, where true hyphae start to form and elongate whilst the pH of the mono-species remains neutral, whereas dropping to 6.5 in the co-culture. From 4 h onwards, the difference between the two conditions becomes visibly evident. Here the mono-species *C. albicans* biofilms showed denser and longer hyphae that continued to increase over time, whilst the pH remained neutral across all time points. Conversely, the abundance and length of the hyphae appeared to be unchanged from 4 to 24 h in the co-cultures. Interestingly, the 4 h time point also represents the point in which the media becomes more acidic and drops to 5.5 in the co-cultures. The pH of the co-culture remained acidic (pH 5.5) at 4, 6, and 8 h, and starts to rise slightly at 24 h to reach 6.0, which indicates some buffering attempts exerted by *C. albicans*. The pH values of *C. albicans* mono-species, *E. faecalis* mono-species and their co-culture at the different time points is available in Fig. S3. Collectively, these observations further confirm that *E. faecalis* induced inhibition of *C. albicans* hyphal morphogenesis and biofilm formation is based on the ability of *E. faecalis* to acidify the environment which in turns drives a predominantly yeast phenotype [68].

## 4. Discussion

There is a growing fascination of how *C. albicans* interacts with bacterial species within complex interkingdom communities [31,56,69,70]. These studies have been instrumental in furthering our understanding of how this opportunistic yeast co-operates, or otherwise, with

key bacterial species. Our previous work has shown how interactions with different species of *Lactobacillus* leads to differential health outcomes in patients with recurrent vulvovaginal candidiasis, and that denture wearing patients have resilient populations of *C. albicans* that support bacterial biofilm populations [31,71]. In this new study we describe changes in *C. albicans* growth, phenotype, virulence and transcriptome when co-cultured with *E. faecalis* *in vitro*. In agreement with previous *in vitro* and *in vivo* studies, our preliminary investigation showed an inhibition of *C. albicans* growth, hyphal morphogenesis and biofilm formation in dual-species biofilms [18,33–40]. Subsequent RNASeq showed that *E. faecalis* rapidly and significantly alters *C. albicans* gene expression. Our enrichment analysis findings and the degree of overlapping with responses observed to lactobacilli and weak organic acids directed our interest toward the role of pH and stress response in this inter-kingdom interaction.

At the outset of this work we reviewed the published mechanisms of interaction between *C. albicans* and *E. faecalis*, where the secreted bacteriocin EntV was reported as a potent inhibitor of *C. albicans* hyphal morphogenesis, biofilm formation, and virulence, albeit with limited strain selection [34,40]. Despite this carefully characterised phenomenon we were unable to demonstrate a correlation between the expression of EntV and the level of inhibition of *C. albicans* biofilm biomass, suggesting that an alternative additional interaction was important. It has been reported that for optimal functionality EntV requires post-translational gelatinase processing [36], though our own assessment of gelatinase activity showed there was no difference observed between the strains with positive activity, and those lacking this property in suppressing *C. albicans* biofilm (data not shown). Moreover, despite the heat inactivation and the removal of any *E. faecalis* supernatant proteins of molecular weight of more than 3 kDa, *C. albicans* hyphal and biofilm formation was not recovered, again suggestive of another mechanism. EntV is a heat stable peptide, therefore, recovery of *C. albicans* biofilm activities was not anticipated following heat treatment. However, the increased inhibition associated with ultrafiltered supernatants was surprising. There is no clear explanation of why ultrafiltration enhanced biofilm inhibition, however, it is possible that the proteins and molecules from the supernatant had a subtle buffering capacity, so removal of these exposed *C. albicans* solely to a pH effect. We surmised that differences in growth media and the *E. faecalis* strains used in our work could account for the difference in findings. The ability

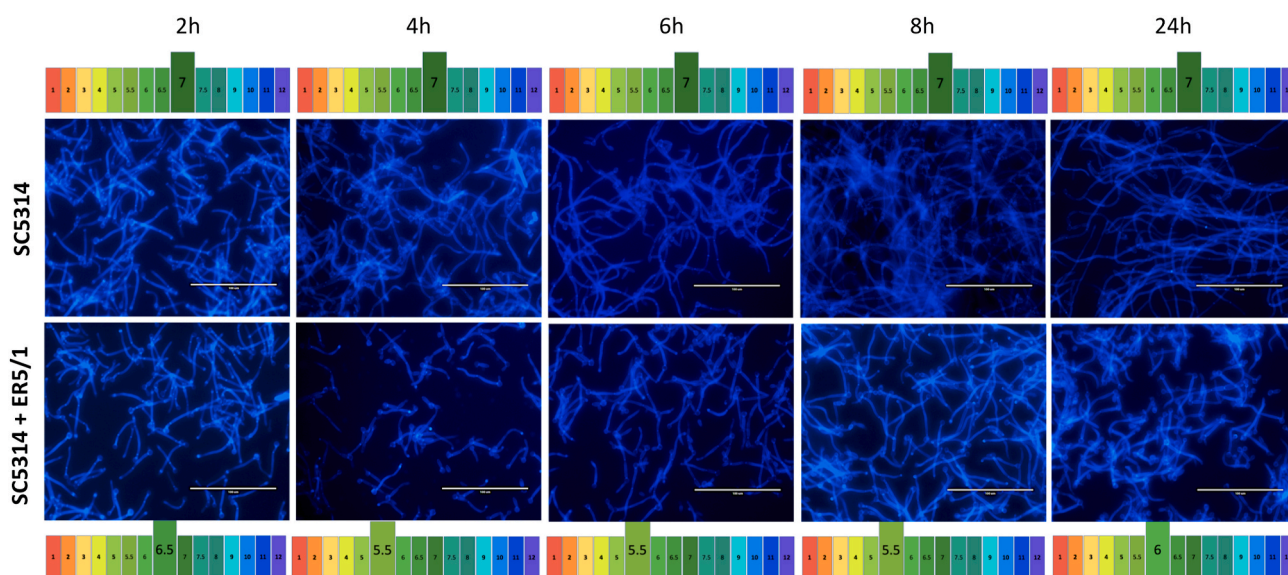


Fig. 8. *C. albicans* hyphal formation and elongation in mono-culture and coculture with *E. faecalis* at 2, 4, 6, 8 and 24h. *C. albicans* SC5314 grown in THB: RPMI in mono- and dual-species biofilms with *E. faecalis* ER5/1. At every time point, supernatant removed, biofilms washed with PBS and stained with calcofluor white and supernatant's pH is measured. Images are for SC5314 and ER5/1 with Scale bars of 100  $\mu$ m and pH measurements of the supernatant of each condition at the relevant time point.

of *E. faecalis* to metabolise nutrients and thereby produce organic acids may differ according to the media used. Metabolising THB:RPMI by *E. faecalis* resulted in a significant drop in pH after 24 h. However, similar drop may not be achieved with other growth media such as artificial saliva used in EntV based studies. Indeed, post-translational modification following gene expression may explain the absence of correlation between the high EntV gene expression in three of the *E. faecalis* strains and the levels of *C. albicans* biofilm inhibition. It is also possible that the low expression of EntV gene in most *E. faecalis* strains was sufficient, or reached an expression threshold, beyond which any extra expression fails to cause more inhibition of *C. albicans* biofilm formation. We cannot rule out the possibility that EntV requires undefined optimal conditions for full functionality, including a specific pH range. Therefore, it is possible that raising the supernatant pH may have impaired the functionality of EntV and renders it less effective in inhibiting *C. albicans* biofilm formation. However, the evidence gathered does not support previous reports showing the singular importance of EntV in preventing *C. albicans* hyphal growth and biofilm formation [34].

To investigate for alternative mechanisms, we conducted a large-scale transcriptional analysis, and in doing so revealed the possibility of pH dependent mechanisms. Amino acid starvation was excluded for the reasons explained above. Some studies reported enrichment of *C. albicans* amino acids biosynthesis/metabolism in response to acids [29], lactic acid producing bacteria [31] and to oxidative stress [30,62]. Moreover, the vast majority of enriched pathways in *C. albicans* mono-species biofilms were also enriched in the response to the weak organic acids [29]. Upregulation in arginine biosynthesis and oxidative stress related genes were also shown in *C. albicans* when internalized by macrophages [62]. However, none of the reported oxidative stress genes in their study was upregulated in our dual-species biofilm. This further focussed the subsequent investigation to pH dependant mechanisms.

*C. albicans* tolerates and adapts to a wide pH range, and this dynamic feature plays an important role in changing gene expression and morphology [64,72]. In an acidic environment, *C. albicans* grows as yeast cells, while neutral and alkaline environment induces filamentation [68]. In low pH, *C. albicans* uses amino acids as a carbon source in glucose limiting environment and produce ammonia which in turn rises the extracellular pH and induce hyphal morphogenesis. This ability of *C. albicans* to raise the extracellular pH was also observed in our results. As shown in Figs. 8 and S3, despite the early drop, the pH of dual-species biofilms started to rise at 24 h. Therefore, *E. faecalis* induced inhibition of *C. albicans* can be time and media dependant where the ability of *E. faecalis* to acidify the media and the time required for *C. albicans* to raise the extracellular pH and restore hyphal morphogenesis play a major role. *C. albicans* environment alkalization was also associated with upregulation in arginine biosynthesis [67]. This finding further supports the close association between amino acid biosynthesis upregulation and pH response in *C. albicans*. Moreover, *C. albicans* utilization of amino acids for environment alkalization is repressed by glucose. This may explain the reduced expression of amino acid biosynthesis and transport genes in glucose supplemented media noted in our data shown in Fig. 4c.

As *E. faecalis* favours the growth in the yeast form of *C. albicans*, it suppresses the latter's virulence. We showed previously that *C. albicans* is more susceptible to endodontic irrigants when co-cultured with *E. faecalis* compared with its mono-species biofilm [73]. Ishijima and colleagues (2014) also showed that oral administration of heat killed *E. faecalis*, in the form of the commercially available probiotic, protected immunocompromised mice from oral candidiasis [37]. They reasoned this protection to the direct binding of heat killed *E. faecalis* to *C. albicans* yeast, pseudohypha and hyphae, and therefore reduces *C. albicans* adherence to surfaces. This is another proposed mechanism of *C. albicans* and *E. faecalis* interaction. Likewise, it has been shown that the survival of *Caenorhabditis elegans* was significantly higher when co-infected with *C. albicans* and *E. faecalis* compared with the infection with single

species. Similar results were also reported by Cruz and colleagues [33], which indicates that *C. albicans* and *E. faecalis* are inhibiting one another's virulence, and instead enhance commensalism. When considering endodontic infections of the root canals of teeth where these two microorganisms are frequently co-isolated from recurrent infections, this interkingdom interaction may influence their persistence in the root canals. The standard endodontic treatment regimen of root canals involves dressing the canals with calcium hydroxide as antimicrobial medicament between treatment visits. The antimicrobial efficiency of calcium hydroxide is attributed to its high alkalinity (pH 12.5) [74]. Although, most endodontic pathogens are sensitive to calcium hydroxide, *C. albicans* and *E. faecalis* are shown to be tolerant [75]. The ability of *E. faecalis* to produce lactic acid may account for its ability, and *C. albicans* through coexistence, to neutralize and survive the high alkalinity of calcium hydroxide.

Finally, we show the importance of *E. faecalis* induced pH change as inducer of *C. albicans* inhibition of hyphal and biofilm formation. However, the interkingdom interaction between *C. albicans* and *E. faecalis* is dynamic and complicated process that is further influenced by the environment in which this interaction takes place. Therefore, it is expected that this interaction between the two microorganisms can vary in different environments such as in the root canals of teeth and the gut. It is plausible to consider that the biofilm microenvironment within root canals has a positive influence in their ability to coexist and take advantage of the dentinal tubules [76]. The low pH can drive dissolution and enlargement of the tubules, which can then enhance invasive capacity. When *C. albicans* elevates the pH within this microenvironment, then its ability to induce hyphae and invade into the tubules is enhanced [77]. Furthermore, it cannot be claimed that *E. faecalis* effect is based solely on pH and subsequently, the other reported mechanisms namely, EntV bacteriocin [34], anticandidal protein [40] and direct binding [37] cannot be excluded. Notably, we observed that despite a downregulation of hyphal regulated genes *HWP1* and *ECE1*, we did not observe an expected reciprocal downregulation of the key adhesin *ALS3*. This may indicate that the presence of *E. faecalis* stimulates *C. albicans* to maintain its extracellular adhesins to support potential interactions, or at least the organisms within the same microenvironments.

Overall, it is more reasonable to consider that the effect of *E. faecalis* on *C. albicans* is a collective effect of a combination of different mechanisms that ultimately manifested by *C. albicans* inhibition. How the interaction between *C. albicans* and *E. faecalis* fits for potential antimicrobial strategies remains unclear and should be further explored. In addition, to gain a full picture of this interkingdom interaction, the impact of *C. albicans* on *E. faecalis*'s biology should be also evaluated.

## 5. Conclusions

This study highlights the importance that the microenvironment can make in driving dysbiosis or rebiosis within complex interkingdom interactions. We cannot assume antagonism from a simple phenotypic change, but instead we need to carefully assess whether this change benefits the competing species. We have shown that modulation of the pH microenvironment influences these perceived enemies to become friends (frenemies) and drive co-existence to support invasion of dentinal tubules.

## CRedit authorship contribution statement

**Om Alkhir Alshanta:** participated in study design, experimental procedures, data analysis, and wrote the manuscript. **Khawlah Albashaiah:** participated in study design, experimental procedures and data analysis. **Emily McKloud:** participated in study design, experimental procedures and data analysis. **Christopher Delaney:** participated in study design, experimental procedures and bioinformatic data analysis. **Ryan Kean:** conceived the study, participated in study design, and was responsible for producing the final manuscript. **William McLean:**



conceived the study, participated in study design, and was responsible for producing the final manuscript. **Gordon Ramage:** conceived the study, participated in study design, and was responsible for producing the final manuscript. All authors have read and approved the final manuscript.

### Declaration of competing interest

The authors declare that they have no known competing financial interests or personal relationships that could have appeared to influence the work reported in this paper.

### Acknowledgements

We would also like to acknowledge the funding support of the BBSRC Industrial CASE PhD studentship for Christopher Delaney (BB/P504567/1).

### Data availability

Sequenced transcriptome data has been deposited to the NCBI sequence read archive (SRA) database and can be found under accession number PRJNA731052.

### Appendix A. Supplementary data

Supplementary data to this article can be found online at <https://doi.org/10.1016/j.biofilm.2022.100072>.

### References

- [1] Kean R, Rajendran R, Haggarty J, Townsend EM, Short B, Burgess KE, et al. Candida albicans mycofilms support Staphylococcus aureus colonization and enhances miconazole resistance in dual-species interactions. *Front Microbiol* 2017; 8:258.
- [2] He J, Kim D, Zhou X, Ahn S-J, Burne RA, Richards VP, et al. RNA-seq reveals enhanced sugar metabolism in Streptococcus mutans co-cultured with Candida albicans within mixed-species biofilms. *Front Microbiol* 2017;8:1036.
- [3] Méar J-B, Kipnis E, Faure E, Dessein R, Schurtz G, Faure K, et al. Candida albicans and Pseudomonas aeruginosa interactions: more than an opportunistic criminal association? *Med Maladies Infect* 2013;43(4):146–51.
- [4] Janus M, Crielgaard W, Volgenant C, Van Der Veen M, Brandt B, Krom B. Candida albicans alters the bacterial microbiome of early in vitro oral biofilms. *J Oral Microbiol* 2017;9(1):1270613.
- [5] Bertolini M, Dongari-Bagtzoglou A. The relationship of Candida albicans with the oral bacterial microbiome in health and disease. In: *Oral mucosal immunity and microbiome*. Springer; 2019. p. 69–78.
- [6] Zhai B, Ola M, Rolling T, Tosini NL, Joshowitz S, Littmann ER, et al. High-resolution mycobiota analysis reveals dynamic intestinal translocation preceding invasive candidiasis. *Nat Med* 2020;26(1):59–64.
- [7] Dutton LC, Paszkiewicz KH, Silverman RJ, Splatt PR, Shaw S, Nobbs AH, et al. Transcriptional landscape of trans-kingdom communication between C. albicans and S. treptococcus gordonii. *Mol Oral Microbiol* 2016;31(2):136–61.
- [8] Kim D, Liu Y, Benhamou RI, Sanchez H, Simón-Soro Á, Li Y, et al. Bacterial-derived exopolysaccharides enhance antifungal drug tolerance in a cross-kingdom oral biofilm. *ISME J* 2018;12(6):1427–42.
- [9] Xu H, Sobue T, Thompson A, Xie Z, Poon K, Ricker A, et al. Streptococcal co-infection augments C. albicans pathogenicity by amplifying the mucosal inflammatory response. *Cell Microbiol* 2014;16(2):214–31.
- [10] Kashem SW, Kaplan DH. Skin immunity to Candida albicans. *Trends Immunol* 2016;37(7):440–50.
- [11] Rindum J, Stenderup A, Holmstrup P. Identification of Candida albicans types related to healthy and pathological oral mucosa. *J Oral Pathol Med* 1994;23(9):406–12.
- [12] Achkar JM, Fries BC. Candida infections of the genitourinary tract. *Clin Microbiol Rev* 2010;23(2):253–73. <https://doi.org/10.1128/cmr.00076-09>.
- [13] Mason KL, Downward JRE, Falkowski NR, Young VB, Kao JY, Huffnagle GB, et al. Interplay between the gastric bacterial microbiota and Candida albicans during postantibiotic recolonization and gastritis. *Infect Immun* 2012;80(1):150–8. <https://doi.org/10.1128/IAI.05162-11>.
- [14] Higuera NIA, Huycke MM. Enterococcal Disease, Epidemiology, and Implications for Treatment. *Enterococci: From Commensals to Leading Causes of Drug Resistant Infection*. 2014 [Internet].
- [15] Hube B. From commensal to pathogen: stage-and tissue-specific gene expression of Candida albicans. *Curr Opin Microbiol* 2004;7(4):336–41.
- [16] Mason KL, Stepien TA, Blum JE, Holt JF, Labbe NH, Rush JS, et al. From commensal to pathogen: translocation of Enterococcus faecalis from the midgut to the hemocoel of Manduca sexta. *mBio* 2011;2(3):e00065. 11.
- [17] Yapar N. Epidemiology and risk factors for invasive candidiasis. *Therapeut Clin Risk Manag* 2014;10:95.
- [18] Krishnamoorthy AL, Lemus AA, Solomon AP, Valm AM, Neelakantan P. Interactions between Candida albicans and Enterococcus faecalis in an organotypic oral epithelial model. *Microorganisms* 2020;8(11):1771.
- [19] Bertolini M, Munoz RV, Archambault L, Shah S, Souza JGS, Costa RC, et al. Mucosal bacteria modulate Candida albicans virulence in oropharyngeal candidiasis. *mBio* 2021;12(4):e01937. <https://doi.org/10.1128/mBio.01937-21>.
- [20] Mason KL, Erb Downward JR, Falkowski NR, Young VB, Kao JY, Huffnagle GB. Interplay between the gastric bacterial microbiota and Candida albicans during postantibiotic recolonization and gastritis. *Infect Immun* 2012;80(1):150–8.
- [21] Kovac J, Kovac D, Slobodnikova L, Kotulova D. Enterococcus faecalis and Candida albicans in the dental root canal and periapical infections. *Bratisl Lek Listy* 2013; 114(12):716–20.
- [22] Dahlén G, Blomqvist S, Almståhl A, Carlén A. Virulence factors and antibiotic susceptibility in enterococci isolated from oral mucosal and deep infections. *J Oral Microbiol* 2012;4(1):10855.
- [23] de Freitas Lima SM, da Costa Sousa MG, de Souza Freire M, de Almeida JA, de Castro Cantuária AP, e Silva TAM, et al. Immune response profile against persistent endodontic pathogens Candida albicans and Enterococcus faecalis in vitro. *J Endod* 2015;41(7):1061–5.
- [24] Vaghela DJ, Kandaswamy D, Venkateshbabu N, Jamini N, Ganesh A. Disinfection of dental tubules with two different formulations of calcium hydroxide as compared to 2% chlorhexidine: as intracanal medicaments against Enterococcus faecalis and Candida albicans: an in vitro study. *J Conserv Dent: J Comput Dynam* 2011;14(2):182.
- [25] Ghivari SB, Bhattacharya H, Bhat KG, Pujar MA. Antimicrobial activity of root canal irrigants against biofilm forming pathogens-An in vitro study. *J Conserv Dent: J Comput Dynam* 2017;20(3):147.
- [26] Noites R, Pina-Vaz C, Rocha R, Carvalho MF, Gonçalves A, Pina-Vaz I. Synergistic antimicrobial action of chlorhexidine and ozone in endodontic treatment. *BioMed Res Int* 2014;2014.
- [27] Kean R, Delaney C, Rajendran R, Sherry L, Metcalfe R, Thomas R, et al. Gaining insights from Candida biofilm heterogeneity: one size does not fit all. *J Fungi (Basel)* 2018;4(1). <https://doi.org/10.3390/jof4010012>.
- [28] O'Donnell LE, Millhouse E, Sherry L, Kean R, Malcolm J, Nile CJ, et al. Polymicrobial Candida biofilms: friends and foe in the oral cavity. *FEMS Yeast Res* 2015;15(7). <https://doi.org/10.1093/femsyr/fov077>.
- [29] Cottier F, Tan ASM, Chen J, Lum J, Zolezzi F, Poidinger M, et al. The transcriptional stress response of Candida albicans to weak organic acids. *G3: Gene Genet. Genomes* 2015;5(4):497–505.
- [30] Bruno VM, Wang Z, Marjani SL, Euskirchen GM, Martin J, Sherlock G, et al. Comprehensive annotation of the transcriptome of the human fungal pathogen Candida albicans using RNA-seq. *Genome Res* 2010;20(10):1451–8.
- [31] McCloud E, Delaney C, Sherry L, Kean R, Williams S, Metcalfe R, et al. Recurrent vulvovaginal candidiasis: a dynamic interkingdom biofilm disease of Candida and Lactobacillus. *mSystems* 2021;6(4):e00622. 21.
- [32] Bandara H, Wood D, Vanwonderghem I, Hugenholtz P, Cheung B, Samaranyake LP. Fluconazole resistance in Candida albicans is induced by Pseudomonas aeruginosa quorum sensing. *Sci Rep* 2020;10(1):1–17.
- [33] Cruz MR, Graham CE, Gagliano BC, Lorenz MC, Garsin DA. Enterococcus faecalis inhibits hyphal morphogenesis and virulence of Candida albicans. *Infect Immun* 2013;81(1):189–200.
- [34] Graham CE, Cruz MR, Garsin DA, Lorenz MC. Enterococcus faecalis bacteriocin EntV inhibits hyphal morphogenesis, biofilm formation, and virulence of Candida albicans. *Proc Natl Acad Sci Unit States Am* 2017;114(17):4507–12.
- [35] Garsin DA, Lorenz MC. Candida albicans and Enterococcus faecalis in the gut: synergy in commensalism? *Gut Microb* 2013;4(5):409–15.
- [36] Brown AO, Graham CE, Cruz MR, Singh KV, Murray BE, Lorenz MC, et al. Antifungal activity of the Enterococcus faecalis peptide EntV requires protease cleavage and disulfide bond formation. *mBio* 2019;10(4):e01334. 19.
- [37] Ishijima SA, Hayama K, Ninomiya K, Iwasa M, Yamazaki M, Abe S. Protection of mice from oral candidiasis by heat-killed enterococcus faecalis, possibly through its direct binding to Candida albicans. *Med Mycol J* 2014;55(1):E9–19.
- [38] Hassan MN, Tartor YH, Ashour AF, Elmowalid EA. Enterococcus faecalis cell-free supernatant inhibits hyphal morphogenesis and biofilm formation in Candida albicans. *Zagazig Vet. J.* 2018;46(2):128–35.
- [39] Bachtir EW, Dewiyan S, Akbar SMS, Bachtir BM. Inhibition of Candida albicans biofilm development by unencapsulated Enterococcus faecalis cps2. *J. Dent. Sci.* 2016;11(3):323–30.
- [40] Shekh RM, Roy U. Biochemical characterization of an anti-Candida factor produced by Enterococcus faecalis. *BMC Microbiol* 2012;12(1):132. <https://doi.org/10.1186/1471-2180-12-132>.
- [41] Fonzi WA, Irwin MY. Isogenic strain construction and gene mapping in Candida albicans. *Genetics* 1993;134(3):717–28.
- [42] Kim EB, Kopit LM, Harris LJ, Marco ML. Draft genome sequence of the quality control strain Enterococcus faecalis ATCC 29212. In: *Am soc microbiol*; 2012.
- [43] Coco B, Bagg J, Cross L, Jose A, Cross J, Ramage G. Mixed Candida albicans and Candida glabrata populations associated with the pathogenesis of denture stomatitis. *Oral Microbiol Immunol* 2008;23(5):377–83.
- [44] Sedgley C, Lennan S, Clewell D. Prevalence, phenotype and genotype of oral enterococci. *Oral Microbiol Immunol* 2004;19(2):95–101.



- [45] Johnson EM, Flannagan SE, Sedgley CM. Coaggregation interactions between oral and endodontic *Enterococcus faecalis* and bacterial species isolated from persistent apical periodontitis. *J Endod* 2006;32(10):946–50.
- [46] Sahm DF, Kissinger J, Gilmore MS, Murray PR, Mulder R, Solliday J, et al. In vitro susceptibility studies of vancomycin-resistant *Enterococcus faecalis*. *Antimicrob Agents Chemother* 1989;33(9):1588–91.
- [47] Shelburne CE, An FY, Dholpe V, Ramamoorthy A, Lopatin DE, Lantz MS. The spectrum of antimicrobial activity of the bacteriocin subtilisin A. *J Antimicrob Chemother* 2007;59(2):297–300.
- [48] Sedgley C, Buck G, Appelbe O. Prevalence of *Enterococcus faecalis* at multiple oral sites in endodontic patients using culture and PCR. *J Endod* 2006;32(2):104–9.
- [49] O'Donnell LE, Alalwan HKA, Kean R, Calvert G, Nile CJ, Lappin DF, et al. *Candida albicans* biofilm heterogeneity does not influence denture stomatitis but strongly influences denture cleansing capacity. *J Med Microbiol* 2017;66(1):54–60. <https://doi.org/10.1099/jmm.0.000419>.
- [50] Sherry L, Rajendran R, Lappin DF, Borghi E, Perdoni F, Falleni M, et al. Biofilms formed by *Candida albicans* bloodstream isolates display phenotypic and transcriptional heterogeneity that are associated with resistance and pathogenicity. *BMC Microbiol* 2014;14:182. <https://doi.org/10.1186/1471-2180-14-182>.
- [51] Montelongo-Jauregui D, Srinivasan A, Ramasubramanian AK, Lopez-Ribot JL. An in vitro model for oral mixed biofilms of *Candida albicans* and *Streptococcus gordonii* in synthetic saliva. *Front Microbiol* 2016;7:686.
- [52] Gil-Bona A, Reales-Calderon JA, Parra-Giraldo CM, Martinez-Lopez R, Monteoliva L, Gil C. The cell wall protein Ecm33 of *Candida albicans* is involved in chronological life span, morphogenesis, cell wall regeneration, stress tolerance, and host–cell interaction. *Front Microbiol* 2016;7(64). <https://doi.org/10.3389/fmicb.2016.00064>.
- [53] Jose A, Coco BJ, Milligan S, Young B, Lappin DF, Bagg J, et al. Reducing the incidence of denture stomatitis: are denture cleansers sufficient? *J Prosthodont: Implant Esthetic Reconstr Dent* 2010;19(4):252–7.
- [54] O'Donnell LE, Smith K, Williams C, Nile CJ, Lappin DF, Bradshaw D, et al. Dentures are a reservoir for respiratory pathogens. *J Prosthodont* 2016;25(2):99–104.
- [55] Livak KJ, Schmittgen TD. Analysis of relative gene expression data using real-time quantitative PCR and the 2<sup>−</sup>ΔΔCT method. *Methods* 2001;25(4):402–8.
- [56] Short B, Delaney C, McKlud E, Brown JL, Kean R, Litherland GJ, et al. Investigating the transcriptome of *Candida albicans* in a dual-species *Staphylococcus aureus* biofilm model. *Front Cell Infect Microbiol* 2021;11:791523. <https://doi.org/10.3389/fcimb.2021.791523>.
- [57] Ramage G, VandeWalle K, López-Ribot JL, Wickes BL. The filamentation pathway controlled by the Efg1 regulator protein is required for normal biofilm formation and development in *Candida albicans*. *FEMS Microbiol Lett* 2002;214(1):95–100.
- [58] Alshanta OA, Shaban S, Nile CJ, McLean W, Ramage G. *Candida albicans* biofilm heterogeneity and tolerance of clinical isolates: implications for secondary endodontic infections. *Antibiotics* 2019;8(4):204.
- [59] White TC, Agabian N. *Candida albicans* secreted aspartyl proteinases: isoenzyme pattern is determined by cell type, and levels are determined by environmental factors. *J Bacteriol* 1995;177(18):5215–21.
- [60] Daigian-Fornier B, Pinson B. Yeast to study human purine metabolism diseases. *Cells* 2019;8(1):67.
- [61] Tripathi G, Wiltshire C, Macaskill S, Tournu H, Budge S, Brown AJP. Gcn4 co-ordinates morphogenetic and metabolic responses to amino acid starvation in *Candida albicans*. *EMBO J* 2002;21(20):5448–56. <https://doi.org/10.1093/emboj/cdf507>.
- [62] Lorenz MC, Bender JA, Fink GR. Transcriptional response of *Candida albicans* upon internalization by macrophages. *Eukaryot Cell* 2004;3(5):1076–87.
- [63] Mehmeti I, Solheim M, Nes IF, Holo H. *Enterococcus faecalis* grows on ascorbic acid. *Appl Environ Microbiol* 2013;79(15):4756–8.
- [64] Davis D. Adaptation to environmental pH in *Candida albicans* and its relation to pathogenesis. *Curr Genet* 2003;44(1):1–7.
- [65] Vazquez-Munoz R, Dongari-Bagtzoglou A. Anticandidal activities by *Lactobacillus* species: an update on mechanisms of action. *Frontiers in Oral Health* 2021:47.
- [66] Dos Santos ALS. HIV aspartyl protease inhibitors as promising compounds against *Candida albicans* André Luis Souza dos Santos. *World J Biol Chem* 2010;1(2):21.
- [67] Vylkova S, Carman AJ, Danhof HA, Collette JR, Zhou H, Lorenz MC. The fungal pathogen *Candida albicans* autoinduces hyphal morphogenesis by raising extracellular pH. *mBio* 2011;2(3):e00055. 11.
- [68] Davis D, Wilson RB, Mitchell AP. RIM101-dependent and-independent pathways govern pH responses in *Candida albicans*. *Mol Cell Biol* 2000;20(3):971–8.
- [69] Pérez JC. The interplay between gut bacteria and the yeast *Candida albicans*. *Gut Microb* 2021;13(1):1979877. <https://doi.org/10.1080/19490976.2021.1979877>.
- [70] Santus W, Devlin JR, Behnsen J. Crossing kingdoms: how the mycobiota and fungal-bacterial interactions impact host health and disease. *Infect Immun* 2021;89(4). <https://doi.org/10.1128/iai.00648-20>.
- [71] Delaney C, O'Donnell LE, Kean R, Sherry L, Brown JL, Calvert G, et al. Interkingdom interactions on the denture surface: implications for oral hygiene. *Biofilm* 2019;1:100002. <https://doi.org/10.1016/j.biofm.2019.100002>.
- [72] Hollomon JM, Grahl N, Willger SD, Koeppen K, Hogan DA, Mitchell AP. Global role of cyclic AMP signaling in pH-dependent responses in *Candida albicans*. *mSphere* 2016;1(6):e00283. <https://doi.org/10.1128/mSphere.00283-16>. 16.
- [73] Alshanta OA, Alqahtani S, Shaban S, Albashaireh K, McLean W, Ramage G. Comparison of three endodontic irrigant regimens against dual-species interkingdom biofilms: considerations for maintaining the status quo. *Antibiotics* 2020;9(9). <https://doi.org/10.3390/antibiotics9090634>.
- [74] Siqueira Jr J, Lopes H. Mechanisms of antimicrobial activity of calcium hydroxide: a critical review. *Int Endod J* 1999;32(5):361–9.
- [75] Waltimo T, Siren E, Orstavik D, Haapasalo M. Susceptibility of oral *Candida* species to calcium hydroxide in vitro. *Int Endod J* 1999;32(2):94–8.
- [76] Ran S, Wang J, Jiang W, Zhu C, Liang J. Assessment of dentinal tubule invasion capacity of *Enterococcus faecalis* under stress conditions ex vivo. *Int Endod J* 2015;48(4):362–72. <https://doi.org/10.1111/iej.12322>.
- [77] Al-Nazhan S, Al-Sulaiman A, Al-Rasheed F, Alnajjar F, Al-Abdulwahab B, Al-Badah A. Microorganism penetration in dentinal tubules of instrumented and retreated root canal walls. In vitro SEM study. *Restor Dent Endod* 2014;39(4):258–64. <https://doi.org/10.5395/rde.2014.39.4.258>.