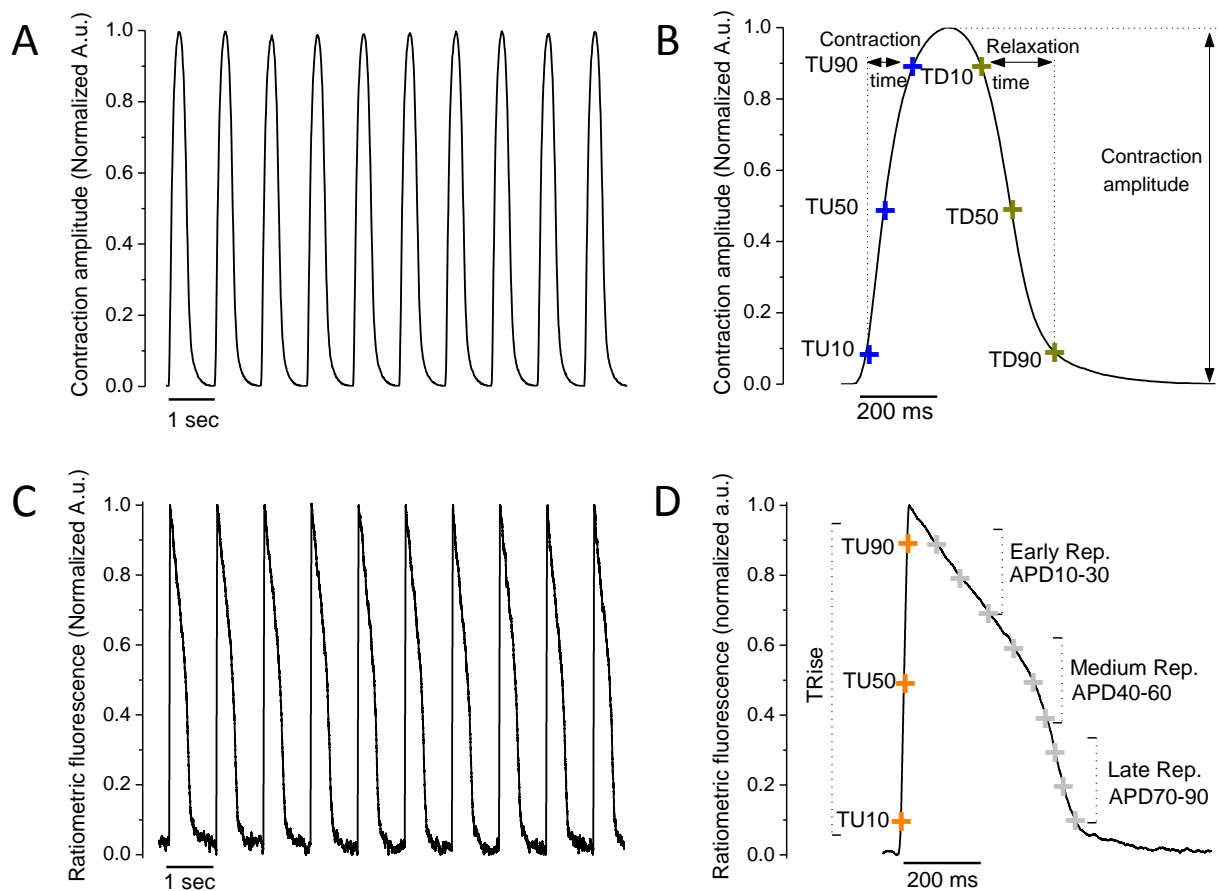


Fig. 1



E

		MEAN	SDM	SEM	N
CONTRACTILITY	AMPLITUDE	374.7	254.75	13.01	383
	UP90	121.35	72.8	3.7	
	DN90	195.7	62.5	3.2	
AP	TRise (ms)	3.91	1.8	0,09	409
	APD ₃₀ (ms)	187.94	37.2	1.84	
	APD ₉₀ (ms)	434.93	50.65	2.5	

Fig. 2

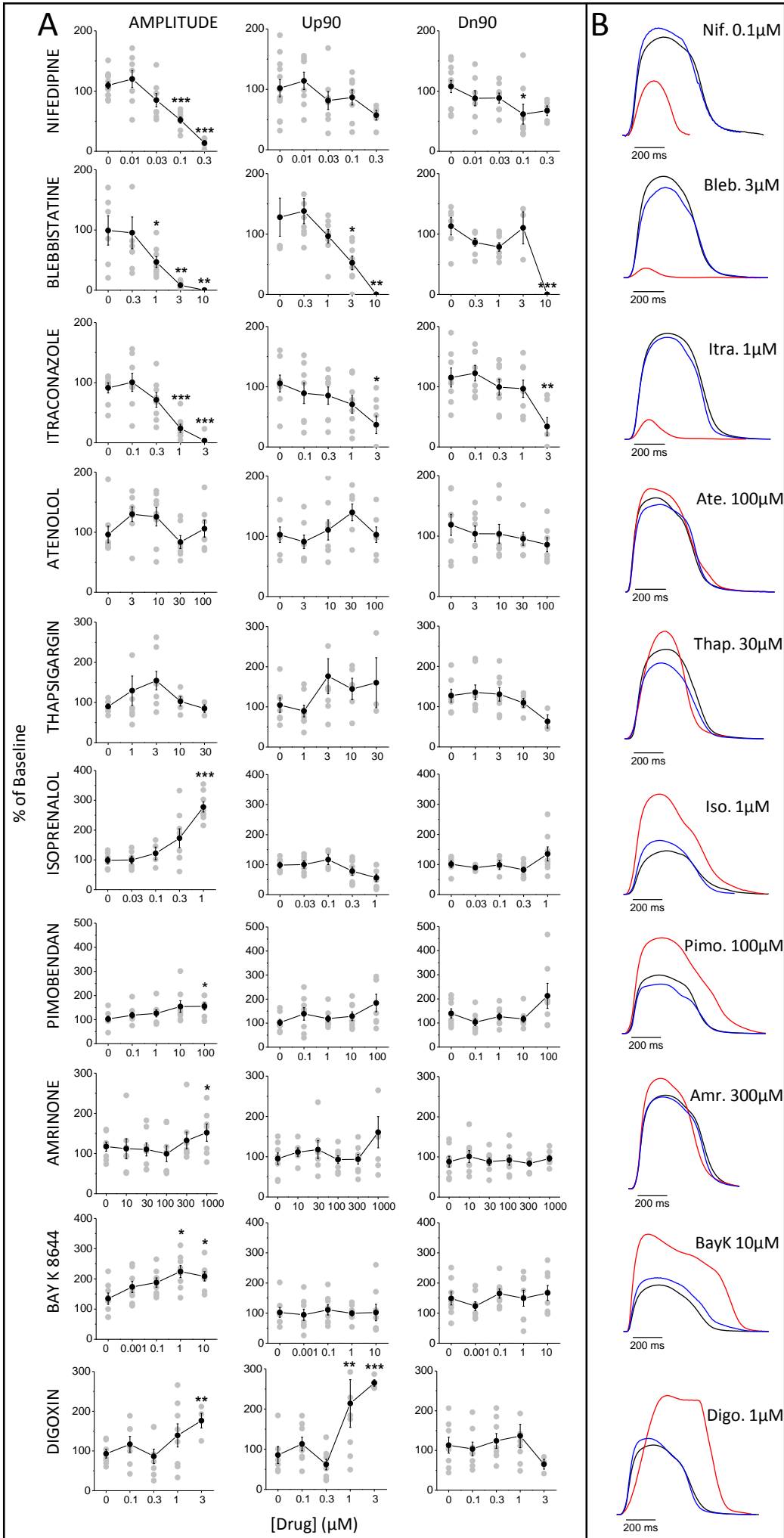


Fig. 3

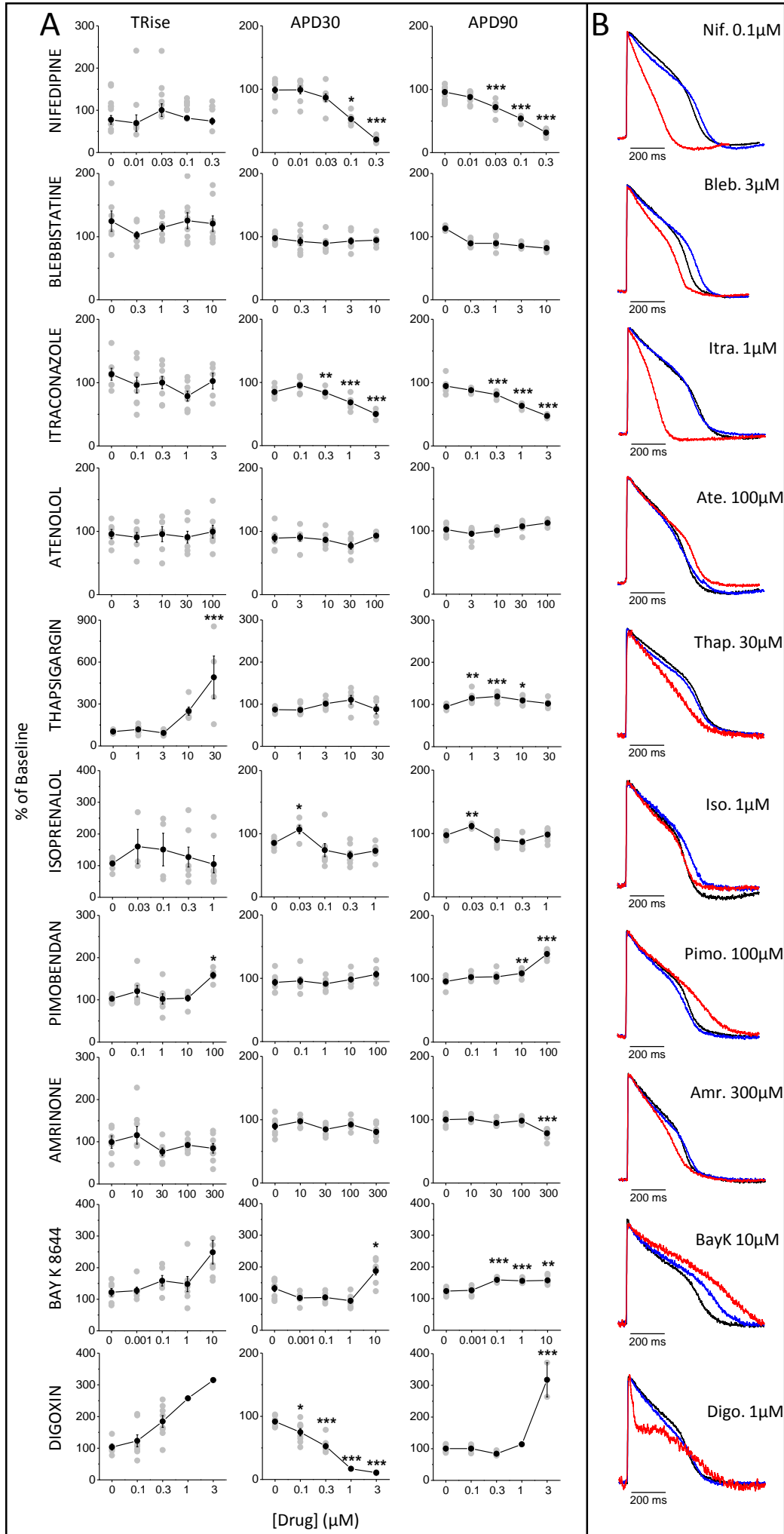


Fig. 4

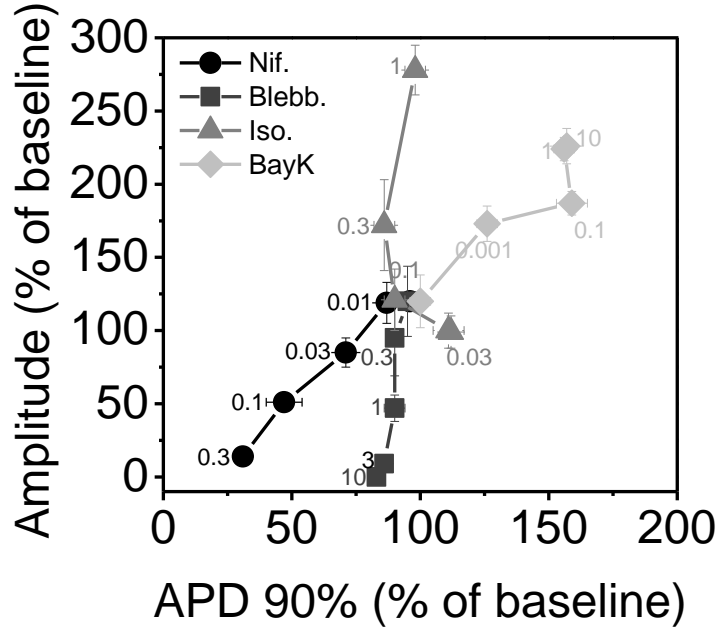


Fig. 5

