

Electronic Supporting Information

TOWARDS NEW THERMOELECTRICS: TIN SELENIDE/MODIFIED GRAPHENE OXIDE NANOCOMPOSITES

Iryna S. Protsak^a, Simon Champet^a, Chang-Yang Chiang^b, Wuzong Zhou^b, Srinivas R. Popuri^c,

Jan-Willem G. Bos^c, Dinesh K. Misra^d, Yevhenii M. Morozov^e, Duncan H. Gregory^{a}*

^aWestCHEM, School of Chemistry, University of Glasgow, Glasgow, G12 8QQ, UK

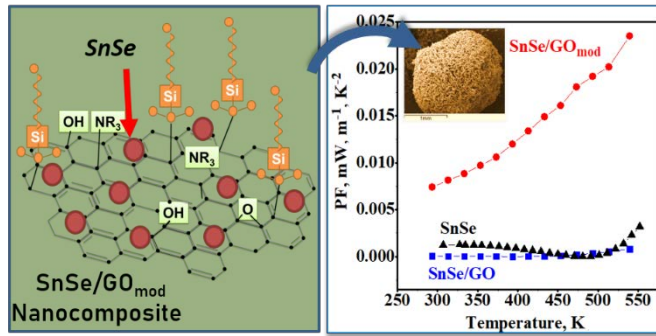
^bEaSTCHEM, School of Chemistry, University of St Andrews, St Andrews, Fife KY16 9ST, UK

^cSchool of Engineering & Physical Sciences, Heriot-Watt University, Edinburgh, EH 14 4AS, UK

^dCSIR - National Physical Laboratory, National Measurement Institute of India, Dr. K.S. Krishnan Road,
New Delhi-110012, INDIA

^eInstitute for Information Recording of NASU, 2 Shpaka St., 03113, Kyiv, Ukraine

For table of contents use only



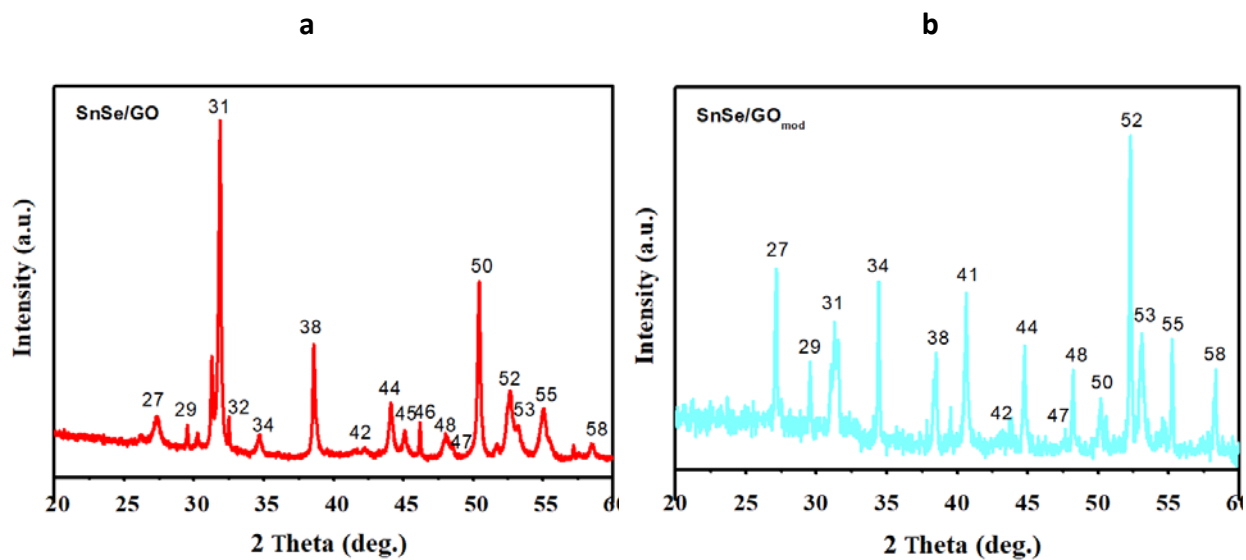


Figure S1. XRD patterns of both nanocomposites, (a) SnSe/GO and (b) SnSe/GO_{mod} recorded after hot pressing.

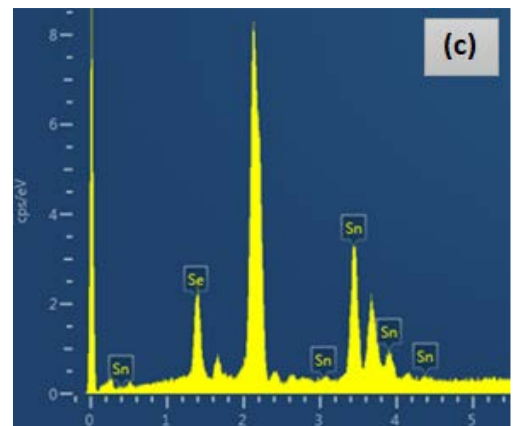
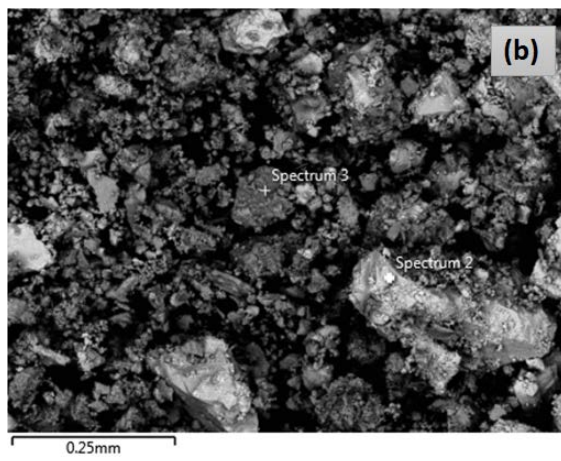
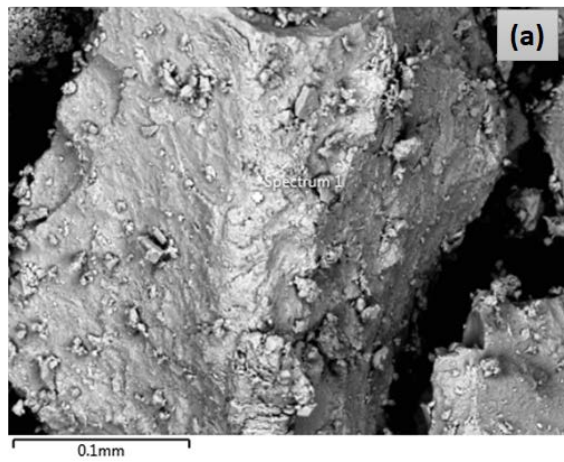


Figure S2. SEM image of parent SnSe at: (a) higher and (b) lower magnification; (c) EDS spectrum at a single point of neat SnSe.

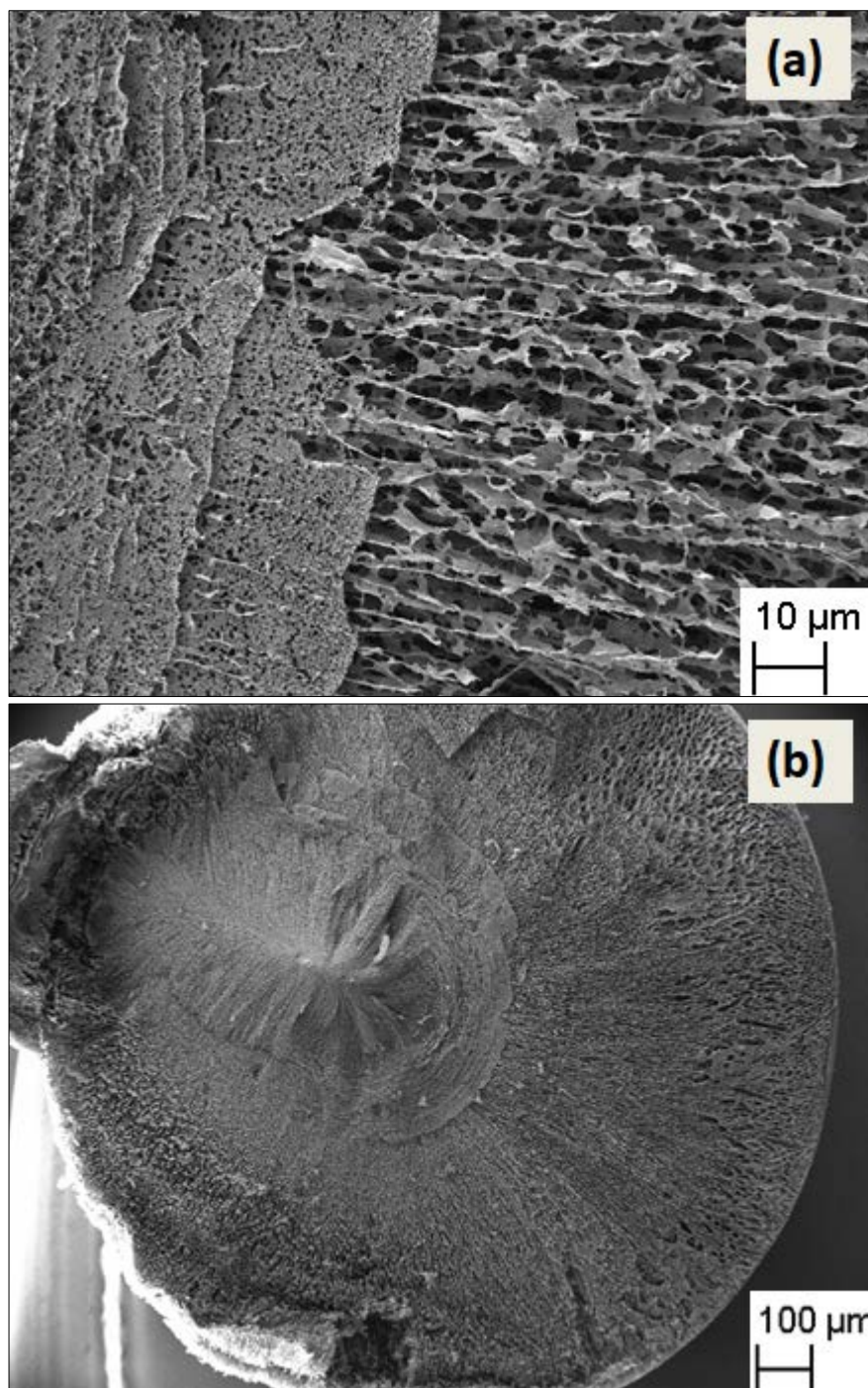


Figure S3. SEM image of parent GO at: (a) higher and (b) lower magnification.

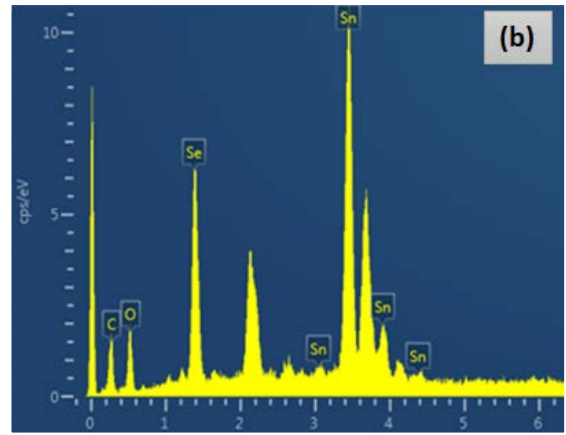
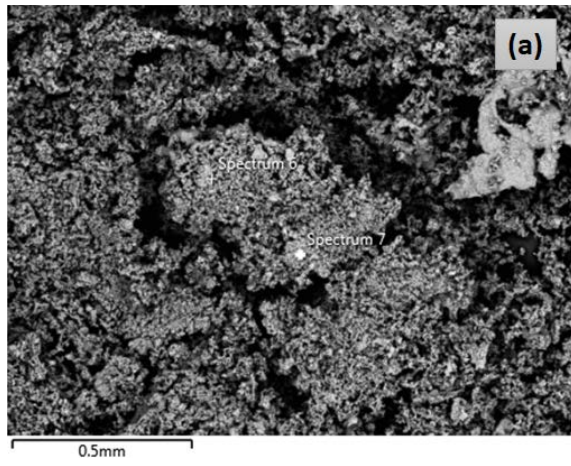


Figure S4. (a) SEM image of the SnSe/GO nanocomposite; (b) EDS spectrum at a single point of the SnSe/GO nanocomposite.

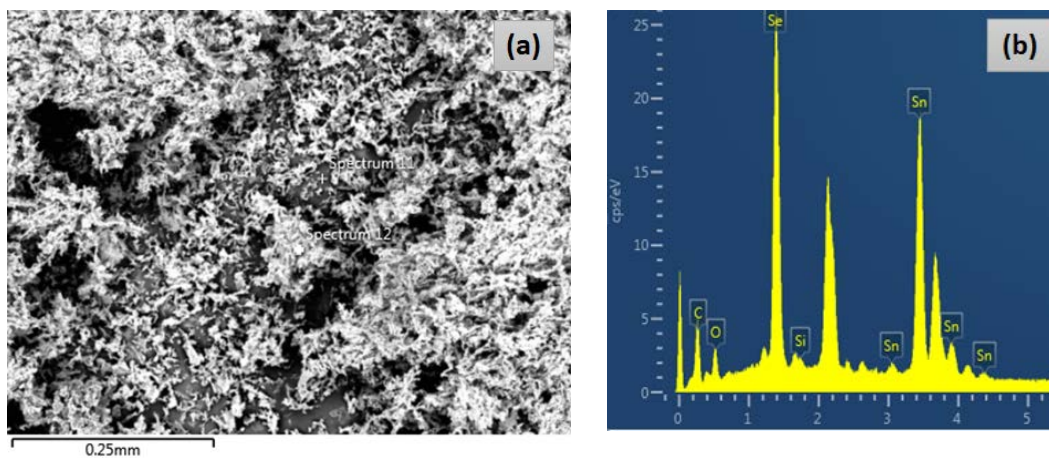


Figure S5. (a) SEM image of the SnSe/GO_{mod} nanocomposite; (b) EDS spectrum at a single point of the SnSe/GO_{mod} nanocomposite.

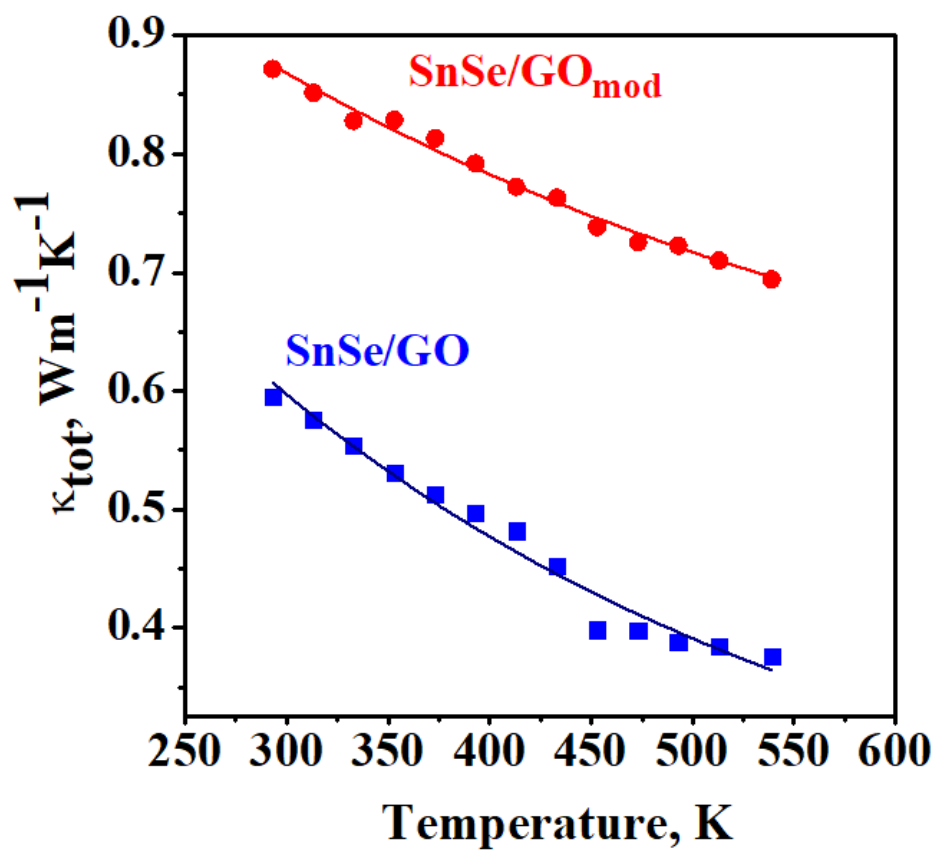


Figure S6. The thermal conductivity of modified and unmodified nanocomposites SnSe/GO_{mod} (red) and SnSe/GO (blue) respectively.