



Dominoni, D. M., Åkesson, S., Klaassen, R., Spoelstra, K. and Bulla, M. (2017)  
Methods in field chronobiology. Philosophical Transactions of the Royal Society B:  
Biological Sciences, 372(1734), 20160247.

There may be differences between this version and the published version. You are  
advised to consult the publisher's version if you wish to cite from it.

<http://eprints.gla.ac.uk/150283/>

Deposited on: 10 November 2017

Enlighten – Research publications by members of the University of Glasgow\_  
<http://eprints.gla.ac.uk>

## Methods in field chronobiology

Davide Dominoni<sup>1,2\*</sup>, Susanne Åkesson<sup>3</sup>, Raymond Klaassen<sup>4</sup>, Kamiel Spoelstra<sup>1</sup>,  
Martin Bulla<sup>5,6</sup>

<sup>1</sup> Department of Animal Ecology, Netherlands Institute of Ecology, P.O. Box 50, 6700 AB, Wageningen, The Netherlands

<sup>2</sup> Institute of Biodiversity, Animal Health and Comparative Medicine, University of Glasgow, Glasgow G128QQ, UK

<sup>3</sup> Centre for Animal Movement Research, Department of Biology, Lund University, Lund S-223 62, Sweden

<sup>4</sup> Groningen Institute for Evolutionary Life Sciences, University of Groningen, Groningen 9747 AG, The Netherlands

<sup>5</sup> Department of Behavioural Ecology and Evolutionary Genetics, Max Planck Institute for Ornithology, Seewiesen 82319, Germany

<sup>6</sup> NIOZ Royal Netherlands Institute for Sea Research, Department of Coastal Systems, and Utrecht University, P.O. Box 59, 1790 AB Den Burg, The Netherlands

\*Author for correspondence (d.dominoni@nioo.knaw.nl).

**Keywords:** clocks, fibroblasts, remote sensing, GPS-tracking, incubation, radar

## **Summary**

Chronobiological research has seen a continuous development of novel approaches and techniques to measure rhythmicity at different levels of biological organization from locomotor activity (e.g. migratory restlessness) to physiology (e.g. temperature and hormone rhythms, and relatively recently also in genes, proteins and metabolites). However, the methodological advancements in this field have been mostly and sometimes exclusively used only in indoor laboratory settings. In parallel, there has been an unprecedented and rapid improvement in our ability to track animals and their behaviour in the wild. However, while the spatial analysis of tracking data is widespread, its temporal aspect is largely unexplored. Here, we review the tools that are available or have potential to record rhythms in the wild animals with emphasis on currently overlooked approaches and monitoring systems. We then demonstrate, in three question-driven case studies, how the integration of traditional and newer approaches can help answer novel chronobiological questions in free-living animals. Finally, we highlight unresolved issues in field chronobiology that may benefit from technological development in the future. As most of the studies in the field are descriptive, the future challenge lies in applying the diverse technologies to experimental set-ups in the wild.

## Introduction

For all organisms, exact timing of behaviour to both daily and seasonal environmental cycles is crucial for survival and successful reproduction [1,2]. Consequently, the study of biological rhythms, chronobiology, is a vibrant and interdisciplinary research area in biology [3–5]. However, chronobiology has been largely dominated by studies of just a few model organisms under standardized laboratory conditions [4]. Bringing such studies into the wild has often generated surprising outcomes [6–8].

The knowledge gaps and discrepancies between laboratory and field studies were emphasized in a recent perspective article on the diversity of animal clocks in the wild: “...to begin to understand the adaptive significance of the clock, we must expand our scope to study diverse animal species from different taxonomic groups, showing diverse activity patterns, in their natural environments” [4]. Indeed, whereas controlled laboratory studies are essential to investigate the proximate mechanisms behind biological rhythms, they offer little insight about the diversity of temporal strategies that free-living animals may adopt and the fitness consequences of an eco-evolutionary process that takes place in the “real world”.

Building on this evidence, ecologists are increasingly using individual-based telemetry with high temporal and spatial resolution not only to study the movements of wild animals, but also to gain insights into the temporal patterns of their behaviour and physiology, as well as into the genetic, environmental and/or life-history factors that might affect the regulation of such rhythms [9,10]. For instance, recent telemetry work on arctic shorebirds has revealed unexpected inter- and intra-specific variation in their behavioural rhythms under the continuous daylight of arctic summer [10–12], and the combination of automatic radiotelemetry and EEG loggers demonstrated a link between activity and fitness in a polygynous shorebird [13]. Also, combining GPS-tracking, accelerometers and EEG loggers revealed unprecedented sleep-wake cycles of frigatebirds (*Fregata minor*) flying over the ocean for up to 10 days uninterrupted [14]. The integration of ecological and chronobiological approaches and techniques can therefore help not only answering old questions traditionally confined to laboratory settings, but also ask novel exciting questions that are more pertinent to field systems (Table 1). Such integration can also improve our understanding about how adaptive biological rhythms are in the wild, for instance through a combination of genetic engineering and animal tracking [15].

This paper has two major aims. First, we review traditional and relatively recent tools to collect chronobiological data in the wild. In particular, we emphasize the suitability of ecological tools initially developed for other purposes (e.g. to map migration patterns of animals) and the added value of integrating different technologies. Second, we present three case studies to demonstrate how such tools and their integration can be used to answer some of the questions in the field chronobiology (Table 1). We pick each case study for a specific reason. The first case study uses array of technologies to reveal the diversity and drivers of behavioural rhythms in the wild, as well as to discuss how the findings compare to the findings from captive conditions (Table 1, questions 1-3). Most of the technologies in this case study were traditionally deployed for other purposes than measuring behavioural rhythms. In the second case study we initially review technologies that allow individual-based and group-based tracking of insects, for which we have yet to fully appreciate how their rhythms are expressed in the wild. We then demonstrate the use of laser radar to record activity rhythms of insect groups across time and habitats (Table 1, question 1). The third case study combines tracking methods and genetic engineering to tackle one of the most pressing chronobiological questions, that is, whether clocks are adaptive (Table 1, question 5).

### **Integrating old and new approaches to record rhythms in the field**

Chronobiologists assess rhythmicity in captive animals by measuring activity rhythms (e.g., locomotion and foraging), physiological rhythms (e.g., body temperature or melatonin production), and molecular rhythms (e.g., gene expression) [3,16,17]. Activity rhythms are quantified using infrared sensors or mechanical instruments such as the running wheel [18]. Physiological rhythms are usually assessed using temperature and heart rate loggers [19], or sampling of blood, urine and faeces which are subsequently analysed for hormone concentration (melatonin, testosterone, etc.) [20]. Molecular rhythms are assessed by gene expression - a relatively recent tool - performed with diverse methods ranging from microarrays to quantitative PCRs [17] and transcriptomics [21], or by quantification a wide range of proteins and metabolites [21]. All these methodologies can be used, and some of them already are used, to also elucidate rhythms of organisms in the wild. For instance, a recent study used running wheels with free-living mice in the wild [18] and found similar temporal patterns of running as in captive mice. In

addition, there have been great developments in individual-based tracking technologies as well as in automated monitoring systems, which allows gaining unprecedented insight into behavioural and physiological rhythms of free-living animals. Thus, chronobiologists have now a well-equipped toolbox at hand to study rhythms of organisms in the wild.

We summarise the methods available to field chronobiology in Table 2 and 3. We distinguish methods used to record behavioural and physiological rhythms (Table 2), which often involve tagging animals, from relatively new methodologies that assess molecular rhythms or use genetic engineering to manipulate circadian time (Table 3). We briefly describe how each method works, what kind of rhythmic information it can measure, and provide examples of chronobiological questions it can help answer. Although we have described each method separately, field chronobiology may strongly benefit from integrating existing methodologies. For instance, geolocators and accelerometers can be jointly deployed on the same animal to infer daily activity patterns of birds at different stages of their migration journey [22,23]. and a combination of accelerometers, automated radio-telemetry and EEG recordings revealed strikingly variability in timing of sleep in tree-toed sloths (*Bradypus variegatus*) [24]. In addition, different technologies can be integrated within a single tag. For example, daily diaries have multiple built-in sensors that simultaneously record behavioural, physiological and environmental rhythms [25], thereby allowing a holistic view into biological rhythms of wild animals.

## **CASE STUDY 1: Diversity of individual rhythms in the wild - avian incubation and foraging behaviour**

**Key questions:** How variable are rhythms within and between wild populations? What drives such variation? Are rhythms of captive animals comparable to rhythms of animals in the wild?

We understand little about within- and between-species diversity of behavioural rhythms in the wild (see Editorial of this issue and [4]). Consequently, we also understand little about what drives the potential variation in these rhythms, e.g. to what extent rhythms are determined by evolutionary history and/or by plastic responses to the environment.

Here, we demonstrate how diverse monitoring methods can be used to fill this knowledge gap, that is, to study variation in behavioural rhythms (daily and seasonal) in free-living non-

model organisms in their natural environments and in unexplored contexts. Specifically, we discuss monitoring methods used to reveal the diversity in incubation rhythms of biparental shorebirds [11] and demonstrate the use of GPS-tracking to derive novel data on diverse foraging activity patterns of raptors (Klaassen *et al.*, in preparation).

# **Incubation rhythms of biparental shorebirds.**

It is often unclear how findings on single individuals translate to the social context typically experienced by organisms in their natural environment, i.e. when it matters to them [4]. For example, when individuals pursue a common goal such as reproducing, the social environment is expected to shape their behavioural rhythms [26]. However, social synchronization and its outcome in terms of behavioural rhythms are poorly understood.

Avian biparental incubation is a mutually exclusive, but socially synchronized, behavioural rhythm. A recent study [11] used an array of monitoring methods (RFIDs, light loggers, GPS-based systems, radio-tags, video recordings and continuous observations; Table 4) to reveal unprecedented within- and between- species diversity in incubation rhythms across 729 nests of 91 populations of 32 biparentally-incubating shorebird species (Fig. 1).

Multiple sampling methods allowed us to include more species and populations, as well as to increase sample size for some populations. Although the sampling interval varied from continuous to 30 min sampling between methods (Table 3) and populations, as well as within some populations, the incubation variables were independent of sampling interval (Table 2 in the Extended Data of [11]).

Incubation records were transformed to local time (UTC time+(nest's longitude/15)) to make them comparable across sites. For each nest, the authors manually or automatically [11,12,27,28] extracted lengths of all available incubation bouts defined as the total time allocated to a single parent (i.e. the time between the arrival of a parent at and its departure from the nest followed by incubation of its partner). Bout lengths were then used to extract the length of the period (the most prominent cycle of female and male incubation) that dominated each incubation rhythm. Finally, phylogenetically informed comparative analyses were used to investigate phylogenetic signal in bout and period length, the relationship between bout length and body size, latitude and escape distance from the nest, as well as relationship between period and latitude.

The study found substantial within- and between-species variation in incubation rhythms (Fig. 1). For example, between species, the period length of the incubation rhythms varied from six to 43 hours. Different species, but also different pairs of the same species, adopted strikingly different incubation rhythms, even when breeding in the same area. For example, the incubation period length for Long-billed dowitchers *Limnodromus scolopaceus* varied from 21.75 to 48 hours. Interestingly, 24-h incubation rhythms were absent in 78% of nests representing 18 out 32 species.

Importantly, the study explained part of the described variation in the incubation rhythms. For example, there was a strong phylogenetic signal (Pagel's  $\lambda$  was close to 1). In addition, the incubation rhythms with periods that do not follow the 24-h light-dark cycle were more common and the deviations from 24-h increased in shorebirds breeding at high latitudes. This supports the existence of a latitudinal cline in incubation rhythms, but a substantial number of rhythms defied the 24-h day even at low and mid latitudes. These results indicate that under natural conditions social synchronization can generate far more diverse behavioural rhythms than previously expected (e.g. from studies of captive animals), and that the incubation rhythms often defy the assumptions of entrainment to the 24-h day-night cycle.

### **Diel activity patterns of diurnal raptors**

Individual variation in daily and seasonal foraging rhythms remains poorly understood. This is perhaps not surprising as, until recently, long term monitoring of many individuals was not feasible (e.g. it was too labour intensive, but see an example on hunting activity of individual European Kestrels *Falco tinnunculus* recorded with visual observations [29]). This issue is now solved by the availability of several types of tracking devices that allow us to follow the behaviour and movements of individual animals in unprecedented spatiotemporal detail (Table 2). However, most analyses of tracking data focus on spatial aspects such as home range size and migration routes, whereas temporal aspects such as daily and seasonal activity patterns are largely overlooked (but see e.g. [30–33]). This suggests that the huge amount of detailed tracking data that is currently routinely collected is generally underused for chronobiological purposes. Here we provide an example of how GPS-tracking data could be used to infer daily foraging rhythms of individual Montagu's Harriers *Circus pygargus*.



We re-analysed GPS tracking data of three individual Montagu's Harriers, which were originally collected to study home range behaviour and habitat use during the breeding season (Klaassen *et al.* in preparation). The birds were tracked by UvA-BiTS GPS-loggers [34] that were programmed to sample the position and speed of the bird every 5 to 30 minutes during the day and every hour to two hours during the night (note that one of the advances of this tracking system is that tags can be programmed remotely when in reach of a local antennae, [34]). Flying behaviour was defined when the instantaneous GPS-speed exceeded 2 m/s, as the intercept of the probability density functions of speeds during sitting and during flight, which together make up the bi-modal density distribution of instantaneous speeds (Klaassen *et al.*, in preparation). To reconstruct daily activity patterns, the proportion of flight instances within each hour of the day was calculated, lumping data across all available days (7-14 days, see Fig. 2). The average time flying per day was obtained by the sum of the hourly flight proportions. In this analysis, only daylight hours were included as loggers only collected sufficient data during daylight hours (fix interval 5-30 minutes) and because harriers are strictly diurnal. Montagu's Harriers hunt on the wing by slowly flying above foraging habitat, thus flight will mainly represent foraging activity. As Montagu's Harriers are long-distance migrants, daily activity patterns could be compared across different ecological contexts, i.e. the breeding site in Europe, their main migratory stopover site in Northwest Africa, and the wintering site in the Sahel in Africa [35].

Within individuals, daily activity patterns differed between the breeding, stopover and wintering site. Harriers flew more at breeding sites (mean values for the three individuals were 6.4, 7.5 and 7.7 hours per day, based on N = 183 days) than at stopover (3.4, 3.7 & 4.7 hours per day, N = 42 days) or wintering sites (4.1, 4.2 & 4.4 hours per day, N = 214 days) (Fig. 2). Not only had the amount of time spent flying per day varied between sites, but also temporal patterns of daily activity. For example, at wintering sites, harriers have a distinct dip in activity around noon. This "Siesta" is much less pronounced for stopover sites and almost absent for breeding sites (Fig. 2). Activity patterns also differed between individuals, with for example "Joey" flying less (6.5 hours per day) during the breeding season compared to "Elzo" (7.7) and "Yde" (7.5) (Fig. 2).

In order to quantify the degree of similarity in daily activity patterns, for example between individuals or between sites, the overlap index was calculated:

$$\frac{2 \sum_i a_i b_i}{\sum_i a_i^2 + \sum_i b_i^2}$$

where  $a$  and  $b$  are the proportions of time flying for the two activity patterns that are compared, for different hours ( $i$ ). This index ranges from 0 for non-overlapping distributions to 1 for identical distributions [36]. The overlap index between sites (average [range] index for each individual: red = 0.81 [0.77-0.87], blue = 0.90 [0.85-0.95] and yellow = 0.75 [0.73-0.79]) was relatively low compared to the overlap index between individuals at a given site (average index [range]: breeding = 0.97 [0.96-0.99], stopover = 0.94 [0.93-0.95] and wintering = 0.93 [0.88-0.96]). Thus, in this particular example, activity patterns tended to be similar across individuals at a given site, but varied to a greater degree across sites (Fig. 2), possibly suggesting a prominent role of environmental drivers shaping activity patterns in wild Montagu's Harriers. Seasonal differences in daily activity patterns could, for instance, arise from different feeding habits of Montagu's Harriers in the three different seasons: voles and the need to feed young during the breeding season [37], eggs and nestlings of passerines during the main spring stopover in NW Africa [38], and grasshoppers in winter [39]. Whether between-individual variation in activity patterns reflects differences in individual personalities, with some birds being more explorative than others (e.g. [40]) or differences in habitat quality, is unclear. The speculations about how this within- and between individual variation arise deserve future testing and can only be resolved by combining the tracking results with field observations of the ecological circumstances at the three sites, such as how prey abundance and harriers' hunting success vary throughout the day [38].

## Conclusion

We demonstrated how incubation and foraging rhythms of free-living birds vary within- and between individuals and species, across seasons, latitudes, and depending on phylogeny (i.e. provide answers to question 1-2 in Table 1), and that such rhythms are more diverse than expected from studies in captivity (question 3 in Table 1).

These finding generate three main questions: (1) Are other behavioural rhythms in the wild also that diverse? (2) Are these rhythms regulated by endogenous (clock-driven) or environmental factors, or by a mixture of these? (3) What are the fitness consequences of various behavioural rhythms? To address these questions, we need to (1) expand our studies to different

species and ecological contexts (e.g. monitoring of rhythms in both predators and preys), (2) use molecular tools that allow quantification of endogenous clocks in the wild (e.g. fibroblast assays, see Table 3 and [41,42]), and (3) monitor behavioural rhythms over the long-term to understand if and how individual variation in rhythms is linked to fitness (see case study 3).

## **CASE STUDY 2: From individual to population rhythms: Timing of insects' movement in the field**

**Key questions:** How variable is timing of activity between insect groups? What environmental factors are related to such variation?

Insects are key laboratory models in chronobiology [43,44]. Yet, long term biotracking of insects in the wild, unlike tracking of vertebrates [45], is rare and limited to the largest species [46]. This is alarming because the limited evidence from semi-natural conditions revealed temporal components of behaviour that markedly differ from those recorded in the laboratory [8]. Here we briefly review the tracking of individual insects, as well as of groups (for description of each method). Then we illustrate recent applications of laser radar to identify groups of insects and their daily activity rhythms over various habitats.

### **Tracking individual insects**

Monitoring of individual insects in the wild can be done by active (battery-powered) radio transmitters or by harmonic radar and RFID which use passive tags (without battery) [46]. Radio-telemetry is limited by the available tags, most of which are too large, too heavy (2-100% of body mass), have limited tracking range on the ground (100–500 m), and/or have short battery life (7-21 days) [46]. Hence, radio-telemetry has been mainly used with larger insects (beetles and crickets), and only relatively recently with bees, dobsonflies and dragonflies. Such studies are mainly local in scale, but ground crews and receivers mounted on an airplane allowed monitoring of dragonfly migration over 150 km and up to 12 days [47].

In contrast to radio-transmitters, the tags used with harmonic radar and RFID have lower weight and hence can be used with a broader range of insect taxa [46]. Although the individuals can be monitored over a longer period of time than with radio-transmitters, the monitoring is only

local as the detection zone of a stationary radar unit is  $< 1$  km in diameter and the detection distance of RFID tags is usually  $< 1\text{--}5$  m. Thus, RFID is useful for insects returning on a regular basis to their burrows (e.g. crickets) or hives (e.g. bees and bumblebees) [46,48].

Although miniaturization of tags will certainly extend the range of trackable insect taxa, some miniature insects are trackable only in groups, for instance with help of citizen science [49] or various radar technologies [50–52] (see Table 2 and next section).

### **Tracking groups of insects**

Vertical-looking radars, harmonic radars and weather radars have all been deployed to track flying insects since 1970s [50–52]. Vertical-looking radars detect insects that pass through the radar beam pointing up into the sky. Harmonic radars detect movements across a horizontal transect at a ground level, while the beam of weather radars spreads out as it moves away from the station, covering an increasingly larger volume (up to several  $\text{km}^3$ ). Thus, these radars are useful to infer timing of migration, flight altitudes (up to 1km) and orientation of the insects in relation to winds [53]. However, information about movements is generally limited to a single location of observation [54]. Moreover, this technology is suitable predominantly for large insects, and insects can only be classified by size and air speeds. In sum, these radar technologies are usually unable to distinguish species from one another. However, to understand activity rhythms in free-ranging insects, especially of those that are too small for any individual-based tracking technology, identifying insects remotely to groups, families, or better to species, is necessary.

Classification of insects to groups may be possible with laser radar (lidar; for details see below and [55]). The lidar beam that spreads out as it moves away from the station, covers a probe volume of approximately  $10\text{ m}^3$  over a 2 km range. Lidars can detect groups of insect by measuring the spectrum of the light reflected by the body and wings of the flying insect as it flies across the laser beam [55,56]. That is, lidar can classify groups of insects according to wing beat frequency, body size, wing area, and potentially also body surface structures.

Classification of larger insects (such as damselflies) to species and to sex (if sexes are colour dimorphic) is also possible. Individuals previously marked with fluorescence dye generate a colour specific peak in the lidar signal [57]. Alternatively, dark-field spectroscopy identifies flying insects by registering sunlight reflected from the insect surface, when the insect passes

across sampling area ( $\varnothing$  20-30 cm, up to 300 m afar) monitored by the spectroscope [58]. The distance to the insect is measured as well as its size and direction of flight, thereby including also spatial components of activity patterns.

### **Use of laser radar to identify rhythms in groups of flying insects**

Here, we illustrate the use of lidar technology to record temporal and spatial variation in flying insect abundance according to insect groups and habitat structures [59]. In this study, the lidar beam was sent 1.8 m above an open meadow and terminated at a distance of 140 m by a box made out of a dark cardboard, in an area where the meadow was surrounded by a forest edge.

Over the course of two nights, three main insect clusters were identified in the data (Fig 3a). Some insect groups had a wider peak of activity and were more evenly distributed over the 140 m transect (Fig 3b, Cluster a-b) than others (Fig 3b, Cluster c). Specifically, one insect cluster was especially abundant at the beginning of the night (Fig. 3b, Cluster c), especially in a meadow surrounded by a forest edge. Such temporal structuring across habitats might be typical for insects. For example, abundance of flying insects is higher over the grazed meadow compared to crop fields with oats [60].

These findings elucidate how various insect groups cluster in time and space and suggest variability in daily timing across different groups of insects and across various habitats. However, the study has two major limitations. First, the study lasted only for three days, but recordings over several days, preferably months, are necessary to identify activity rhythms and their variation over time. This is essential, if we aim to elucidate the role of different environmental variables in driving variation in such rhythms. Second, the body-wing proportions overlapped between species and insects were thus classified only to groups based on body-wing proportions and wing-beat frequencies (Fig. 3a). However, deeper understanding of insect behavioural rhythms requires classification of insects down to the order, family or better species level. Such classification might be feasible if the species classification algorithm includes additional variables [60], or when it is calibrated by releasing insects of known species that are then recorded by the lidar.

### **Conclusion**

Here we briefly reviewed the technology and limitations to track insects, both individually and in groups. Then we demonstrated how lidar may reveal temporal and spatial variation in activity of various flying insect-groups [59,60]. Hence, the study provides preliminary insights about how insect rhythms vary between groups (Table 1, question 1) and across habitat types (Table 1, question 2). We further highlight current limitations in classifying insects to lower taxonomic levels. Once such limitations are tackled, lidar will help us answer question related to the variability and drivers of rhythms in different insect taxa, and how these differ between laboratory and wild populations (Table 1, question 3).

Lidar technology might also prove suitable for future investigations of nocturnal bird migration. Species could be classified based on flight speed, but also based on plumage characteristics, including coloration [57,61]. Such information is of interest to comparative studies investigating seasonal and diurnal variation in migration patterns. In addition, although lidar has been so far applied mainly in pilot studies over short time period, using this technology over longer periods will improve our understanding about daily rhythms of insect abundance across seasonal and environmental contexts.

### **CASE STUDY 3: Measuring fitness consequences of circadian organization in the wild**

**Key question:** Can we link the variation in circadian organization of activity to fitness in the wild?

Accurate timing of daily activity of organisms has long been assumed essential for fitness and survival, for example for the anticipatory regulation of physiology and behaviour in advance of changes in environmental conditions [62,63]. In captive animals, positive effects of a near 24 h endogenous circadian period with a duration comparable to the external (laboratory controlled) light-dark cycle are reported for the growth rate and longevity of insects [44,64], as well as for the lifespan of mice [65] and hamsters [66]. However, the laboratory is not the environment in which species have evolved and circadian traits have been selected. It is therefore essential to study the adaptive value of circadian function under natural conditions [67,68].

To demonstrate adaptiveness of circadian organization in natural habitats is however daunting. First, the powerful natural light/dark cycle limits experimental manipulation of temporal

behaviour. Second, free-ranging individuals have to be followed throughout their life and their reproductive success needs to be measured. DeCoursey et al. [69,70] studied fitness consequences of lesions of the Suprachiasmatic Nucleus (SCN), the master circadian pacemaker in mammals, in antelope squirrels (*Ammospermophilus leucurus*) and chipmunks (*Tamias striatus*). SCN lesions are used in chronobiology experiments to abolish circadian rhythms in sleep-wake cycles and activity in mammals [71,72]. The survival of antelope squirrels and chipmunks was monitored with the use of transponders (RFID's, see Table 2) and radio telemetry, respectively. In these studies, the SCN lesions compromised longevity: individuals with lesions lived shorter than sham control animals. These results provided the first evidence of the adaptive value of circadian organization in free-ranging mammals. However, to rigorously test for fitness consequences, it is essential to measure whether circadian rhythms not only affect survival, but also reproductive success [67].

A way to measure both individual and reproductive fitness is to use heritable circadian traits (e.g. the level of rhythmicity or the length of internal clock's circadian period) in a selection experiment. Such traits have become available in an increasing number of organisms in the form of natural or engineered circadian mutants. Selection experiments have been done in the laboratory with strains of cyanobacteria carrying mutations that effected their circadian period. Strains with a circadian period similar to the applied external light-dark cycle outcompeted strains with a different circadian period; thus, showing selective advantage for an endogenous circadian period that matches the external light/dark cycle [73,74].

Here, we highlight the methods to translate selection experiments into semi-natural conditions using results from two competition experiments with mice [15,75]. The experiments integrated existing monitoring methods with present-day availability of circadian mutants. Wild-type mice (without the mutation) and mutant mice (homo- and hetero-zygote for a circadian mutation) were housed in mixed populations in outdoor enclosures. All mice were produced from heterozygote parents. Mice presence and longevity was monitored by subcutaneous RFID tags recorded at feeding stations. This allowed permanent monitoring of each individual and hence the mutant allele frequency in each population.

The first study [75] used mice with a mutation in the period2 gene (*mPer2<sup>brdm1</sup>*), which weakens circadian rhythmicity and causes health problems in the laboratory [76]. The mutant and

wild type mice were released into four outdoor enclosures in near Mendelian ratio (homozygote : heterozygote : wild type = 1 : 2 : 1). However, there was no selection against the mutant allele over the course of two consecutive years [75].

The second study [15] used a comparable setup as the first one, but with six outdoor enclosures and the mutant tau allele (*Ck1e<sup>tau</sup>*) which shortens the endogenous circadian period [77]. At the start of the experiment this mutation was present in near Mendelian ratio. Here, a strong selective force against the mutant allele reduced its frequency from approximately 0.5 to almost 0.2 in little over a year (Fig. 4). Even though unknown non-circadian pleiotropic effects by the mutation cannot fully be excluded, this finding strongly indicates fitness consequences of aberrant circadian organization.

These results suggest that fitness consequences of behavioural rhythms with a circadian period length that deviates from the light/dark cycle in a semi-natural setting (second study) may be more severe compared to the consequences of a weaker circadian rhythm (first study). This is in line with the profound impact of strong deviations in circadian period reported from the lab [65,66]. However, more studies on the impact of variation of circadian rhythmicity on fitness in the field are needed.

## Conclusion

So, can we link circadian organization to fitness in the wild? In the second experiment, the ultimate control test would be to shorten the duration of the period of the natural light/dark cycle. However, a true manipulation of the natural light/dark cycle is hard to achieve in the field, and this remains a major limitation for experimental studies on fitness consequences of circadian timing in wild animals. Nevertheless, developing novel, long lasting and smaller tracking systems will expand the possibilities to study natural variation of circadian organization in free-ranging species. These will enable us to follow more and smaller species for a longer time in the field. Indeed, in some contexts (e.g. bees, fish in small ponds, birds), life-long tracking of individuals (e.g. using RFID and satellite tracking; see Case study 1 [38]) is already possible. Information on individual variation in circadian organization, in combination with data on longevity will provide new insights on the evolutionary consequences of daily rhythms in free-ranging animals (Table 1, question 5).



The circadian phenotype of the tracked individuals can be precisely estimated by standard behavioural assays in the laboratory, but also with the use of skin fibroblasts (see Table 3 and [78]). In addition, other manipulations of the natural light/dark cycle (e.g. use of artificial light at night in natural habitat) are possible [79] and have been shown to affect circadian as well as seasonal traits in a variety of species [80–82]. However, the fitness consequences of such effects are still unclear. A recent correlative study has linked light at night to variation in dawn song and reproductive success (extra-pair paternity) in a wild songbird [83], but an experimental manipulation of light at night in the field has shown little effect on the reproductive success in a closely related species [79].

## Outlook

Methods to monitor behavioural, physiological and molecular rhythms develop rapidly, but are not used to their full potential for tracking biologically relevant rhythms in free-ranging animals in their natural environments. Here we have briefly reviewed established and unconventional methods available for tracking animal rhythms in the wild and suggest possible future applications (Table 2 and 3). With the help of three case studies, we further illustrated how to use some of the reviewed technologies to reveal: a) the variability in behavioural rhythms at different taxonomic level, from individuals to species (Case study 1 and 2, Figure 1, 2, 3), (b) the phylogenetic and environmental factors that may influence such variability (Case study 1), and (c) the fitness consequences of functional clocks (Case study 3, Figure 4). These case studies serve as examples of what is currently possible to achieve, but the opportunities do not end here. For instance, whereas detailed tracking data are currently limited to larger animals [45], miniaturization of tags may allow individual tracking of very small animals such as insects [46].

Technological advances not only result in smaller devices, but also ‘smarter’ devices that integrate different sensors. For example, tags that contain accelerometers, as well as physiological and environmental sensors, enable a detailed view into the timing of various animal behaviours and the relation of such timing to habitat characteristics [25,32]. However, one of the challenges is to develop standard methods to extract daily activity patterns from tracking data in order to facilitate intra- and inter-specific comparisons. For example, it is yet unclear how to integrate datasets that differ in resolution (e.g. time interval between fixes, accuracy of location data; but

see [11]) or that use different sources of auxiliary data (e.g. accelerometer data compared to instantaneous speed data).

The current rise of field studies is mostly confined to descriptive work. Combining various technologies to record rhythms in the wild with rigorous experimental designs will enhance the mechanistic understanding of how rhythms of free-living animals are regulated, including the relative contribution of endogenous versus environmental factors, as well as the adaptive function of biological clocks.

## **Ethics**

Research using animals shown in the case studies adhered to local guidelines and appropriate ethical approval and licenses were obtained.

## **Data, code and materials**

Supporting information, data and R-codes to reproduce Figure 1 and the incubation results of the 1<sup>st</sup> case study are freely available from Open Science Framework: <https://osf.io/wxufm/>. Data used to produce Figure 2 will be uploaded in Dryad if the manuscript will be accepted.

## **Competing interests**

We have no competing interests.

## **Authors' contribution**

D.M.D., M.B., K.S., S.A. conceived the paper. M.B. drafted the 1st case study, R.K. its foraging part. S.A. drafted the 2<sup>nd</sup> case study. K.S. drafted the 3<sup>rd</sup> case study. D.M.D. coordinated the writing and with help from all other authors drafted the introduction, methods review and outlook. All authors finalized the paper and D.M.D. with M.B. addressed referees' comments.

## **Acknowledgments**

We thank the co-editor of this special issue Bill Schwarz for guidance during designing and drafting the manuscript, and all that made the data collection and analyses, and this paper possible.

## **Funding**

D.M.D is funded through an Open Competition Grant from the Dutch Science Foundation (NWO). M.B. is funded by the Max Planck Society (to Bart Kempenaers) and the EU Marie Curie individual fellowship, and was a PhD student in the International Max Planck Research School for Organismal Biology.

## **References**

1. Emerson, K. J., Bradshaw, W. E. & Holzapfel, C. M. 2008 Concordance of the Circadian Clock With the Environment Is Necessary To Maximize Fitness in Natural Populations. *Evolution (N. Y.)* **62**, 979–983. (doi:10.1111/j.1558-5646.2008.00324.x)
2. Yerushalmi, S. & Green, R. M. 2009 Evidence for the adaptive significance of circadian rhythms. *Ecol. Lett.* **12**, 970–981. (doi:10.1111/j.1461-0248.2009.01343.x)
3. Aschoff, J. 1985 Circadian timing. *Ann. N. Y. Acad. Sci.* **423**, 442–467.
4. Kronfeld-Schor, N., Bloch, G. & Schwartz, W. J. 2013 Animal clocks: when science meets nature. *Proc. R. Soc. B* **280**, 20131354. (doi:10.1098/rspb.2013.1354)
5. Helm, B., Ben-Shlomo, R., Sheriff, M. J., Hut, R. A., Foster, R., Barnes, B. M. & Dominoni, D. M. 2013 Annual rhythms that underlie phenology: biological time-keeping meets environmental change. *Proc. R. Soc. London B Biol. Sci.* **280**, 20130016. (doi:10.1098/rspb.2013.0016)
6. Daan, S. 2011 How and Why? The lab versus the field. *Sleep Biol. Rhythms* **9**, 1–2. (doi:10.1111/j.1479-8425.2010.00482.x)
7. Calisi, R. M. & Bentley, G. E. 2009 Lab and field experiments: Are they the same animal? *Horm. Behav.* **56**, 1–10. (doi:10.1016/j.yhbeh.2009.02.010)
8. Vanin, S., Bhutani, S., Montelli, S., Menegazzi, P., Green, E. W., Pegoraro, M., Sandrelli, F., Costa, R. & Kyriacou, C. P. 2012 Unexpected features of *Drosophila* circadian behavioural rhythms under natural conditions. *Nature* **484**, 371–375.

- (doi:10.1038/nature10991)
9. Dominoni, D. M., Helm, B., Lehmann, M., Dowse, H. B. & Partecke, J. 2013 Clocks for the city: circadian differences between forest and city songbirds. *Proc. R. Soc. London B Biol. Sci.* **280**, 20130593. (doi:10.1098/rspb.2013.0593)
10. Steiger, S. S., Valcu, M., Spoelstra, K., Helm, B., Wikelski, M. & Kempenaers, B. 2013 When the sun never sets: diverse activity rhythms under continuous daylight in free-living arctic-breeding birds. *Proc. R. Soc. B* **280**, 20131016. (doi:10.1098/rspb.2013.1016)
11. Bulla, M. et al. 2016 Unexpected diversity in socially synchronized rhythms of shorebirds. *Nature* **540**, 109–113.
12. Bulla, M., Valcu, M., Rutten, A. L. & Kempenaers, B. 2014 Biparental incubation patterns in a high-Arctic breeding shorebird: How do pairs divide their duties? *Behav. Ecol.* **25**, 152–164. (doi:10.1093/beheco/art098)
13. Lesku, J. A., Rattenborg, N. C., Valcu, M., Vyssotski, a. L., Kuhn, S., Kuemmeth, F., Heidrich, W. & Kempenaers, B. 2012 Adaptive Sleep Loss in Polygynous Pectoral Sandpipers. *Science (80-. ).* **337**, 1654–1658. (doi:10.1126/science.1220939)
14. Rattenborg, N. C., Voirin, B., Cruz, S. M., Tisdale, R., Dell’Omo, G., Lipp, H.-P., Wikelski, M. & Vyssotski, A. L. 2016 Evidence that birds sleep in mid-flight. *Nat. Commun.* **7**, 12468. (doi:10.1038/ncomms12468)
15. Spoelstra, K., Wikelski, M., Daan, S., Loudon, A. S. I. & Hau, M. 2015 Natural selection against a circadian clock gene mutation in mice. *Proc. Natl. Acad. Sci. U. S. A.* , 201516442. (doi:10.1073/pnas.1516442113)
16. Daan, S. & Aschoff, J. 1975 Circadian rhythms of locomotor activity in captive birds and mammals: their variation with season and latitude. *Oecologia* **18**, 269–316. (doi:10.1007/BF00345851)
17. Plautz, J. D., Straume, M., Stanewsky, R., Jamison, C. F., Brandes, C., Dowse, H. B., Hall, J. C. & Kay, S. A. 1997 Quantitative Analysis of Drosophila period Gene Transcription in Living Animals. *J. Biol. Rhythms* **12**, 204–217. (doi:10.1177/074873049701200302)
18. Meijer, J. H. et al. 2014 Wheel running in the wild. *Proc. R. Soc. B* **281**, 348–357. (doi:10.1098/rspb.2014.0210)
19. Williams, C. T., Barnes, B. M. & Buck, C. L. 2012 Daily body temperature rhythms persist

- 556 under the midnight sun but are absent during hibernation in free-living arctic ground
- 557 squirrels. *Biol. Lett.* **8**, 31–4. (doi:10.1098/rsbl.2011.0435)
- 558 20. Dominoni, D. M., Goymann, W., Helm, B. & Partecke, J. 2013 Urban-like night
- 559 illumination reduces melatonin release in European blackbirds (*Turdus merula*):
- 560 implications of city life for biological time-keeping of songbirds. *Front. Zool.* **10**, 60.
- 561 (doi:10.1186/1742-9994-10-60)
- 562 21. Eckel-Mahan, K. L., Patel, V. R., Mohny, R. P., Vignola, K. S., Baldi, P. & Sassone-
- 563 Corsi, P. 2012 Coordination of the transcriptome and metabolome by the circadian clock.
- 564 *PNAS* **109**, 5541–5546. (doi:10.1073/pnas.1118726109)
- 565 22. Bäckman, J., Andersson, A., Alerstam, T., Pedersen, L., Sjöberg, S., Thorup, K. & Tøttrup,
- 566 A. P. 2016 Activity and migratory flights of individual free-flying songbirds throughout the
- 567 annual cycle: method and first case study. *J. Avian Biol.* **47**, 1–11. (doi:10.1111/jav.01068)
- 568 23. Liechti, F. et al. 2013 First evidence of a 200-day non-stop flight in a bird. *Nat. Commun.*
- 569 **4**, R861–R870. (doi:10.1038/ncomms3554)
- 570 24. Rattenborg, N. C., Voirin, B., Vyssotski, A. L., Kays, R. W., Spoelstra, K., Kuemmeth, F.,
- 571 Heidrich, W. & Wikelski, M. 2008 Sleeping outside the box: electroencephalographic
- 572 measures of sleep in sloths inhabiting a rainforest. *Biol. Lett.* **4**, 402–405.
- 573 (doi:10.1098/rsbl.2008.0203)
- 574 25. Wilson, R. P., Shepard, E. L. C. & Liebsch, N. 2008 Prying into the intimate details of
- 575 animal lives: Use of a daily diary on animals. *Endanger. Species Res.* **4**, 123–137.
- 576 (doi:10.3354/esr00064)
- 577 26. Davidson, A. J. & Menaker, M. 2003 Birds of a feather clock together – sometimes: social
- 578 synchronization of circadian rhythms. *Curr. Opin. Neurobiol.* **13**, 765–769.
- 579 (doi:10.1016/j.conb.2003.10.011)
- 580 27. Bulla, M. 2014 R-script and example to extract incubation from temperature measurements.
- 581 (doi:https://dx.doi.org/10.6084/m9.figshare.1037545.v1)
- 582 28. Bulla, M. et al. 2016 Supporting Information for ‘Unexpected diversity in socially
- 583 synchronized rhythms of shorebirds’. *Open Sci. Fram.*
- 584 (doi:http://doi.org/10.17605/OSF.IO/WXUFM)
- 585 29. Rijnsdorp, A., Daan, S. & Dijkstra, C. 1981 Hunting in the kestrel, *Falco tinnunculus*, and

- the adaptive significance of daily habits. *Oecologia* **50**, 391–406.  
(doi:10.1007/BF00344982)
30. Klaassen, R. H. G., Strandberg, R., Hake, M. & Alerstam, T. 2008 Flexibility in daily  
travel routines causes regional variation in bird migration speed. *Behav. Ecol. Sociobiol.*  
**62**, 1427–1432. (doi:10.1007/s00265-008-0572-x)
31. Willis, J., Phillips, J., Muheim, R., Diego-Rasilla, F. J. & Hobday, A. J. 2009 Spike dives  
of juvenile southern bluefin tuna (*Thunnus maccoyii*): a navigational role? *Behav. Ecol.*  
*Sociobiol.* **64**, 57–68. (doi:10.1007/s00265-009-0818-2)
32. Evans, T., Kadin, M., Olsson, O. & Åkesson, S. 2013 Foraging behaviour of common  
murre in the Baltic Sea, recorded by simultaneous attachment of GPS and time-depth  
recorder devices. *Mar. Ecol. - Prog. Ser.* **475**, 277–289.
33. Ensing, E. P. et al. 2014 GPS Based Daily Activity Patterns in European Red Deer and  
North American Elk (*Cervus elaphus*): Indication for a Weak Circadian Clock in  
Ungulates. *PLoS One* **9**, e106997. (doi:10.1371/journal.pone.0106997)
34. Bouten, W., Baaij, E. W., Shamoun-Baranes, J. & Camphuysen, K. C. J. 2012 A flexible  
GPS tracking system for studying bird behaviour at multiple scales. *J. Ornithol.* **154**, 571–  
580. (doi:http://dx.doi.org/10.1007/s10336-012-0908-1)
35. Trierweiler, C., Klaassen, R. H. G., Drent, R. H., Exo, K.-M., Komdeur, J., Bairlein, F. &  
Koks, B. J. 2014 Migratory connectivity and population-specific migration routes in a long-  
distance migratory bird. *Proc. R. Soc. B* **281**, 20132897. (doi:10.1098/rspb.2013.2897)
36. Horn, H. S. 1966 Measurement of ‘Overlap’ in Comparative Ecological Studies. *Am. Nat.*  
**100**, 419–424.
37. Koks, B. J., Trierweiler, C., Visser, E. G., Dijkstra, C. & Komdeur, J. 2007 Do voles make  
agricultural habitat attractive to Montagu’s Harrier *Circus pygargus*? *Ibis (Lond. 1859)*.  
**149**, 575–586. (doi:10.1111/j.1474-919X.2007.00683.x)
38. Schlaich, A. E., Klaassen, R. H. G., Bouten, W., Bretagnolle, V., Koks, B. J., Villers, A. &  
Both, C. 2016 How individual Montagu’s Harriers cope with Moreau’s Paradox during the  
Sahelian winter. *J. Anim. Ecol.* (doi:10.1111/1365-2656.12583)
39. Trierweiler, C., Mullié, W. C., Drent, R. H., Exo, K. M., Komdeur, J., Bairlein, F.,  
Harouna, A., De Bakker, M. & Koks, B. J. 2013 A Palaearctic migratory raptor species

- 616 tracks shifting prey availability within its wintering range in the Sahel. *J. Anim. Ecol.* **82**,
- 617 107–120. (doi:10.1111/j.1365-2656.2012.02036.x)
- 618 40. van Overveld, T. et al. 2010 Personality predicts spatial responses to food manipulations in
- 619 free-ranging great tits (*Parus major*). *Biol. Lett.* **6**, 187–90. (doi:10.1098/rsbl.2009.0764)
- 620 41. Brown, S. A. et al. 2005 The Period Length of Fibroblast Circadian Gene Expression
- 621 Varies Widely among Human Individuals. *PLoS Biol.* **3**, e338.
- 622 (doi:10.1371/journal.pbio.0030338)
- 623 42. Nagoshi, E., Saini, C., Bauer, C., Laroche, T., Naef, F. & Schibler, U. 2004 Circadian gene
- 624 expression in individual fibroblasts: cell-autonomous and self-sustained oscillators pass
- 625 time to daughter cells. *Cell* **119**, 693–705. (doi:10.1016/j.cell.2004.11.015)
- 626 43. Krishnan, B., Levine, J. D., Lynch, M. K., Dowse, H. B., Funes, P., Hall, J. C., Hardin, P.
- 627 E. & Dryer, S. E. 2001 A new role for cryptochrome in a *Drosophila* circadian oscillator.
- 628 *Nature* **411**, 313–317. (doi:10.1038/35077094)
- 629 44. Pittendrigh, C. S. & Minis, D. H. 1972 Circadian systems: longevity as a function of
- 630 circadian resonance in *Drosophila melanogaster*. *PNAS* **69**, 1537–1539.
- 631 45. Kays, R., Crofoot, M. C., Jetz, W. & Wikelski, M. 2015 ECOLOGY. Terrestrial animal
- 632 tracking as an eye on life and planet. *Science* (80-. ). **348**, aaa2478.
- 633 (doi:10.1126/science.aaa2478)
- 634 46. Kissling, W. D., Pattemore, D. E. & Hagen, M. 2014 Challenges and prospects in the
- 635 telemetry of insects. *Biol. Rev.* **89**, 511–530. (doi:10.1111/brv.12065)
- 636 47. Wikelski, M., Moskowicz, D., Adelman, J. S., Cochran, J., Wilcove, D. S. & May, M. L.
- 637 2006 Simple rules guide dragonfly migration. *Biol. Lett.* **2**, 325–329.
- 638 48. Schneider, C. W., Tautz, J., Grünwald, B. & Fuchs, S. 2012 RFID Tracking of Sublethal
- 639 Effects of Two Neonicotinoid Insecticides on the Foraging Behavior of *Apis mellifera*.
- 640 *PLoS One* **7**, e30023. (doi:10.1371/journal.pone.0030023)
- 641 49. Stefanescu, C. et al. 2013 Multi-generational long-distance migration of insects: Studying
- 642 the painted lady butterfly in the Western Palaearctic. *Ecography (Cop.)*. **36**, 474–486.
- 643 (doi:10.1111/j.1600-0587.2012.07738.x)
- 644 50. Hobbs, S. E., Wolf, W. W., Hobbs, S. E. & Wolf, W. W. 1996 Developments in Airborne
- 645 Entomological Radar. *J. Atmos. Ocean. Technol.* **13**, 58–61. (doi:10.1175/1520-

- 0426(1996)013<0058:DIAER>2.0.CO;2)
51. Leskinen, M., Markkula, I., Koistinen, J., Pylkkö, P., Ooperi, S., Siljamo, P., Ojanen, H., Raiskio, S. & Tiilikkala, K. 2011 Pest insect immigration warning by an atmospheric dispersion model, weather radars and traps. *J. Appl. Entomol.* **135**, 55–67. (doi:10.1111/j.1439-0418.2009.01480.x)
52. Cant, E. T., Smith, A. D., Reynolds, D. R. & Osborne, J. L. 2005 Tracking butterfly flight paths across the landscape with harmonic radar. *Proc. R. Soc. B* **272**, 785–90. (doi:10.1098/rspb.2004.3002)
53. Chapman, J. W., Nesbit, R. L., Burgin, L. E., Reynolds, D. R., Smith, A. D., Middleton, D. R. & Hill, J. K. 2010 Flight orientation behaviors promote optimal migration trajectories in high-flying insects. *Science (80-. ).* **327**, 682–685.
54. Åkesson, S. 2016 Flying with the winds: differential migration strategies in relation to winds in moth and songbirds. *J. Anim. Ecol.* **85**, 1–4. (doi:10.1111/1365-2656.12450)
55. Brydegaard, M., Guan, Z., Wellenreuther, M. & Svanberg, S. 2009 Insect monitoring with fluorescence lidar techniques: feasibility study. *Appl. Opt.* **48**, 5668. (doi:10.1364/AO.48.005668)
56. Brydegaard, M., Gebru, A. & Svanberg, S. 2014 Super Resolution Laser Radar with Blinking Atmospheric Particles----Application to Interacting Flying Insects. *Prog. Electromagn. Res.* **147**, 141–151. (doi:10.2528/PIER14101001)
57. Guan, Z., Brydegaard, M., Lundin, P., Wellenreuther, M., Runemark, A., Svensson, E. I. & Svanberg, S. 2010 Insect monitoring with fluorescence lidar techniques: field experiments. *Appl. Opt.* **49**, 5133. (doi:10.1364/AO.49.005133)
58. Runemark, A., Wellenreuther, M., Jayaweera, H. H. E., Svanberg, S. & Brydegaard, M. 2012 Rare Events in Remote Dark-Field Spectroscopy: An Ecological Case Study of Insects. *IEEE J. Sel. Top. Quantum Electron.* **18**, 1573–1582. (doi:10.1109/JSTQE.2012.2184528)
59. Kirkeby, C., Wellenreuther, M. & Brydegaard, M. 2016 Observations of movement dynamics of flying insects using high resolution lidar. *Sci. Rep.* **6**, 29083. (doi:10.1038/srep29083)
60. Brydegaard, M., Gebru, A., Kirkeby, C., Åkesson, S. & Smith, H. G. 2015 Daily evolution



- 676 of the insect biomass spectrum in an agricultural landscape accessed with lidar. In *Proc.*
- 677 *27th Intern Laser Radar Conference, USA*, pp. 4.
- 678 61. Lundin, P., Samuelsson, P., Svanberg, S., Runemark, A., Åkesson, S. & Brydegaard, M.
- 679 2011 Remote nocturnal bird classification by spectroscopy in extended wavelength ranges.
- 680 *Appl. Opt.* **50**, 3396. (doi:10.1364/AO.50.003396)
- 681 62. Daan, S. 1981 Adaptive daily strategies in behavior. In *Handbook of Behavioral*
- 682 *Neurobiology; Biological Rhythms* (ed J. Aschoff), pp. 275–298. New York: Plenum Press.
- 683 63. Pittendrigh, C. S. 1993 Temporal organization: reflections of a Darwinian clock-watcher.
- 684 *Annu. Rev. Physiol.* **55**, 17–54.
- 685 64. Saunders, D. S. 1972 Circadian control of larval growth rate in *Sarcophaga argyrostoma*.
- 686 *Proc. Natl. Acad. Sci.* **69**, 2738–2740.
- 687 65. Libert, S., Bonkowski, M. S., Pointer, K., Pletcher, S. D. & Guarente, L. 2012 Deviation of
- 688 innate circadian period from 24 h reduces longevity in mice. *Aging Cell* **11**, 794–800.
- 689 (doi:10.1111/j.1474-9726.2012.00846.x)
- 690 66. Hurd, M. W. & Ralph, M. R. 1998 The Significance of Circadian Organization for
- 691 Longevity in the Golden Hamster. *J. Biol. Rhythms* **13**, 430–436.
- 692 (doi:10.1177/074873098129000255)
- 693 67. Johnson, C. H. 2005 Testing the adaptive value of circadian systems. *Methods Enzymol.*
- 694 **393**, 818–837.
- 695 68. DeCoursey, P. J. 2004 Diversity of Function of SCN Pacemakers in Behavior and Ecology
- 696 of Three Species of Sciurid Rodents. *Biol. Rhythm Res.* **35**, 13–33.
- 697 (doi:10.1080/09291010412331313214)
- 698 69. DeCoursey, P. J., Krulas, J. R., Mele, G. & Holley, D. C. 1997 Circadian performance of
- 699 suprachiasmatic nuclei (SCN)-lesioned antelope ground squirrels in a desert enclosure.
- 700 *Physiol. Behav.* **62**, 1099–1108.
- 701 70. DeCoursey, P. J., Walker, J. K. & Smith, S. A. 2000 A circadian pacemaker in free-living
- 702 chipmunks: essential for survival? *J. Comp. Physiol. A* **186**, 169–180.
- 703 71. Stephan, F. K. & Zucker, I. 1972 Circadian Rhythms in Drinking Behavior and Locomotor
- 704 Activity of Rats Are Eliminated by Hypothalamic Lesions. *PNAS* **69**, 1583–1586.
- 705 72. Ibuka, N. & Kawamura, H. 1975 Loss of circadian rhythm in sleep-wakefulness cycle in

- 706 the rat by suprachiasmatic nucleus lesions. *Brain Res.* **96**, 76–81. (doi:10.1016/0006-  
707 8993(75)90574-0)
- 708 73. Ouyang, Y., Andersson, C. R., Kondo, T., Golden, S. S. & Johnson, C. H. 1998 Resonating  
709 circadian clocks enhance fitness in cyanobacteria. *Proc. Natl. Acad. Sci.* **95**, 8660–8664.
- 710 74. Woelfle, M. A., Ouyang, Y., Phanvijhitsiri, K. & Johnson, C. H. 2004 The Adaptive Value  
711 of Circadian Clocks. *Curr. Biol.* **14**, 1481–1486. (doi:10.1016/j.cub.2004.08.023)
- 712 75. Daan, S. et al. 2011 Lab Mice in the Field: Unorthodox Daily Activity and Effects of a  
713 Dysfunctional Circadian Clock Allele. *J. Biol. Rhythms* **26**, 118–129.  
714 (doi:10.1177/0748730410397645)
- 715 76. Albrecht, U., Bordon, A., Schmutz, I. & Ripperger, J. 2007 The multiple facets of Per2. In  
716 *Cold Spring Harbor symposia on quantitative biology*, pp. 95–104. Cold Spring Harbor  
717 Laboratory Press.
- 718 77. Loudon, A. S. I., Meng, Q. J., Maywood, E. S., Bechtold, D. A., Boot-Handford, R. P. &  
719 Hastings, M. H. 2007 The Biology of the Circadian Ckl $\epsilon$  tau Mutation in Mice and Syrian  
720 Hamsters: A Tale of Two Species. *Cold Spring Harb. Symp. Quant. Biol.* **72**, 261–271.  
721 (doi:10.1101/sqb.2007.72.073)
- 722 78. Brown, S. A. et al. 2005 The period length of fibroblast circadian gene expression varies  
723 widely among human individuals. *PLoS Biol.* **3**, e338.
- 724 79. De Jong, M., Ouyang, J. Q., Silva, A. Da, Grunsven, R. H. A. Van, Kempnaers, B.,  
725 Visser, M. E. & Spoelstra, K. 2015 Effects of nocturnal illumination on life-history  
726 decisions and fitness in two wild songbird species. *Phil Trans R Soc B* **370**, 1–8.  
727 (doi:10.1098/rstb.2014.0128)
- 728 80. Dominoni, D. M., Borniger, J. C. & Nelson, R. J. 2016 Light at night, clocks and health:  
729 from humans to wild organisms. *Biol. Lett.* **12**, 20160015. (doi:10.1098/rsbl.2016.0015)
- 730 81. Dominoni, D. M. 2015 The effects of light pollution on biological rhythms of birds: an  
731 integrated, mechanistic perspective. *J. Ornithol.* **156**, 409. (doi:10.1007/s10336-015-1196-  
732 3)
- 733 82. Swaddle, J. P. et al. 2015 A framework to assess evolutionary responses to anthropogenic  
734 light and sound. *Trends Ecol. Evol.* **30**, 550–560. (doi:10.1016/j.tree.2015.06.009)
- 735 83. Kempnaers, B., Borgström, P., Loës, P., Schlicht, E. & Valcu, M. 2010 Artificial night

- lighting affects dawn song, extra-pair siring success, and lay date in songbirds. *Curr. Biol.* **20**, 1735–1739. (doi:10.1016/j.cub.2010.08.028)
84. Dominoni, D. M. & Partecke, J. 2015 Does light pollution alter daylength? A test using light loggers on free-ranging European blackbirds (*Turdus merula*). *Phil Trans R Soc B* **370**, 20140118. (doi:10.1098/rstb.2014.0118)
85. Payne, N. L. et al. 2013 Rain reverses diel activity rhythms in an estuarine teleost. *Proc. Biol. Sci.* **280**, 20122363. (doi:10.1098/rspb.2012.2363)
86. Tomotani, B. M. et al. 2012 Field and laboratory studies provide insights into the meaning of day-time activity in a subterranean rodent (*Ctenomys aff. knighti*), the Tuco-Tuco. *PLoS One* **7**, e37918. (doi:10.1371/journal.pone.0037918)
87. Rowcliffe, J. M., Kays, R., Kranstauber, B., Carbone, C. & Jansen, P. A. 2014 Quantifying levels of animal activity using camera trap data. *Methods Ecol. Evol.* **5**, 1170–1179. (doi:10.1111/2041-210X.12278)
88. Hope, P. R. & Jones, G. 2013 An entrained circadian cycle of peak activity in a population of hibernating bats. *J. Mammal.* **94**, 497–505. (doi:10.1644/12-MAMM-A-095.1)
89. Bishop, C. M. et al. 2015 The roller coaster flight strategy of bar-headed geese conserves energy during Himalayan migrations. *Science* **347**, 250–4. (doi:10.1126/science.1258732)
90. Decoursey, P. J., Pius, S., Sandlin, C., Wethey, D. & Schull, J. 1998 Relationship of Circadian Temperature and Activity Rhythms in Two Rodent Species. *Physiol. Behav.* **65**, 457–463. (doi:10.1016/S0031-9384(98)00187-5)
91. Dallmann, R., Viola, A. U., Tarokh, L., Cajochen, C. & Brown, S. A. 2012 The human circadian metabolome. *PNAS* **109**, 2625–2629. (doi:10.1073/pnas.1114410109)

Tables

**Table 1.** Examples of pressing questions in the field chronobiology.

#	Question	Case study
1	How variable are rhythms within and between taxa, species, populations and individuals?	1, 2
2	What drives such variation? (e.g. environmental conditions, internal state, sociality, anthropogenic disturbance, global environmental change)	1, 2
3	Are rhythms of captive animals comparable to rhythms of animals in the wild?	1
4	How can we disentangle the relative contribution of endogenous (genes) versus exogenous (environment) drivers of rhythmicity in wild species?	
5	Is variation in rhythms associated to fitness?	3

**Table 2. Methods to record behavioural and physiological rhythms in free-living animals.** Methods ordered according to (1) type, (2) level of application, (3) tag weight and (4) price. Specific applications are listed only when unique to the given method. For instance, for behavioural rhythms all methods are applicable to record activity vs. non-activity and hence that is not stated.

TYPE	LEVEL	COST	WEIGHT	METHOD	DESCRIPTION	APPLICATION	+/-	SOURCE
<b>Behavioural rhythms</b>								
On board (recapture required)	Individual	€50-200 / tag	> 2g	Light loggers (including light- based geolocators)	Record ambient light levels over time, serve as a proxy for activity. Sometimes also humidity, salinity, acceleration.	Cave nesting and roosting animals, or incubation in birds.	- inaccurate proxy of position - light intensity might not reflect activity	[11,84]
On board (recapture required)	Individual	€50-200 / tag	> 0.7g	Accelerometers	Measure bi- or tri-axial acceleration	Identification of specific behaviours and measurement of energy consumption	+ insight into daily organisation of behaviours	[22,23]
On board	Individual	< €5000/ tag	> 2g	GPS tracking devices	Position estimated in relation to stationary satellites is stored on board and/or send via satellite, cellular, or radio modem in a real time or when animals approach a receiving station.	Information on position in space (e.g. nest, roost, foraging site attendance, habitat type)	+ great proxy of position in space -costly	[33,38]
Stationary	Individual	€7/ tag €400-1000 / energy-efficient reader	> 1 mg	Radio Frequency Identification (RFID)	Electromagnetic fields detects individuals (1cm – 5 cm away) tagged with passive transponders. Reader requires constant energy supply.	Rhythmicity of visits to specific resources (feeding stations) or locations (nests)	+ cheap - relies on periodic visits from animals	[11,15]
Stationary	Individual	>€50k / station	> 6 mg	Harmonic radar with passive tags	Tags (up to 1km afar) transpose an incoming radar signal to a different frequency. When received by the radar station, such reflected signal is distinguishable from other radar-reflective objects.	Record local activity	+ detailed activity and spatial information	[46]
Stationary	Individual	€3000 / receiver	> 0.25 g	Automated radio, acoustic or electro- magnetic tracking	Transmitters emit signal that is captured by automated receivers up to several kilometres afar.	Position in space, activity rhythms and interactions of individuals	+ continuous monitoring of activity state	[9,85]

## R. Soc. open sci. article template

2

								-no info on behavior	
Stationary	Individual Group Population	Labour	> 0.25 g	Continuous observations	Periodic observation of animal behaviour via sight, video-recordings, or radio-tag signal	Recording of daily organisation of specific behaviours		+ real insight into animal behaviour - labour intensive	[86]
Stationary	(Individual) Group Population	€50-200 / trap		Camera traps	Daylight or infra-red illuminated short video or stills triggered by various sensor types (commonly infrared)	Record rhythms of organisms confined to specific place (nest, boroughs), as well as spatial and temporal species interactions		+ easy to deploy - individuals commonly not identifiable - many traps needed	[87]
Stationary	Group Population	€500-2000 / detector		Automatic bat detectors	Sound pressure triggered recording of echolocation	Rhythms of free-ranging bats at a specific location		- species and individual hard to identify	[88]
Stationary	Group Population	>€100k / station		Dark-field spectroscopy	Identifies organisms (e.g. flying insects) by registering sunlight reflected from their surface	Activity rhythms of groups of animals (if classification is validated)		+ no interference with animal behaviour	[58]
Stationary	Group Population	>€300k / radar station		Laser radar (lidar)	Records spectrum of reflected laser light, can be combined with marking of the individuals (species) with colour dyes	Activity rhythms of groups of animals (if classification is validated)		+ no interference with animal behaviour	[59]
Stationary	Groups Population	€2M / radar (based on NexRad WSR88D)		Weather radars	Record frequency changes in reflected radar signal (doppler-shift)	Temporal distribution and direction of passing birds, bats or insects.		+ no interference with animal behaviour - lack species recognition - price	[51]
Physiological rhythms									
On board	Individual	> €500 / tag	> 1 g	Heart rate transmitters and loggers	Electromyocardiograms (EMG) are recorded from radio signals (transmitter) or electrodes (logger)	Rhythms of heart rate and energy consumption (metabolic rate)		+ estimates of metabolic rate - calibration for new studied species	[89]
On board (recapture required)	Individual	> €1000 / tag	> 5 g	EEG recorders	Measure voltage fluctuations resulting from ionic current within brain neurons	Sleep rhythms		+ real sleep patterns - invasive	[13,14]

R. Soc. open sci. article template

3

On board (recapture required)	Individual	> €50 / logger	> 1g	Temperature loggers	Pulse rate of the radio-transmitter varies with temperature and is recorded by researcher or by automated receiver	Body temperature rhythms, health state (fever)	- receiver close to the animal	[19]
Stationary	Individual	< €300 / tag €3000 / receiver	> 0.5g	Temperature radiotransmitters	Record temperature based on variation in transmitter's pulse rate over time	Body temperature rhythms, health state (fever)	+ records activity and body temperature simultaneously - receiver close to the animal	[90]

Table 3. Methods to record molecular rhythms in free-living animals. Table

METHOD	DESCRIPTION	APPLICATION	COST	+	-	SOURCE
Fibroblast cells	A clock gene probe flagged with a bioluminescent marker is inserted into fibroblasts cultured from skin biopsy. Rhythmic expression of clock gene is then measured in constant darkness in a lumicycle.	Measure circadian period length in fibroblast (dermal) cells	> €100 per sample (after first investment to set up facilities)	- Insight into endogenous circadian traits - Useful to disentangle endogenous (clock-driven) from environmental factors affecting rhythmicity	- Cell cultures facilities needed - Requires the use of a lumicycle (> €50k)	[41]
Gene expression	Gene expression level is quantified via transcriptomics, microarrays, RT-qPCR	Diel and seasonal expression levels of candidate genes as well as of entire gene pathways (e.g. immunity, antioxidant system etc)	> €200 / sample	- Expression levels of candidate genes involved in timing, also thousands of genes simultaneously (transcriptomics)	- Bioinformatics - Reference genome	[21]
Proteomics/ Metabolomics	Relative abundance of proteins and metabolites is quantified via mass-spectrometry	Diel and seasonal abundance of proteins and metabolites (including hormones)	> €200 / sample	- Allow studying the abundance of hundreds of proteins and metabolites simultaneously	- Bioinformatics	[91]
Genetic engineering	e.g. mutagenesis, gene targeting by homologous recombination, gene replacement	Daily and seasonal rhythms in sleep, activity, physiology in mutant animals lacking key circadian genes	€5000-10000 (for mice, less predictable for other animals)	- Test properties and consequences of specific aspects of timing	- Pleiotropic effects may affect other genes than target circadian ones	[15]



Table 4. Methods used to derive incubation in biparental shorebirds

Method*	How was incubation derived?	Sampling interval (min)	N populations	N nests
RFID with temperature probe between the eggs	A thin antenna loop, placed around the nest cup and connected to the reader, registered presence of tagged parents at the nest; the passive-integrated tag was either embedded in a plastic flag [12] with which the parents were banded, or glued to the tail feathers [42]. Temperature recordings allowed to identify whether a bird was incubating even in the absence of RFID readings; an abrupt change in temperature demarcated the start or end of incubation [12].	0.08-5.5	23	200
light logger attached to bird's leg	The logger recorded maximum light intensity for a fixed sampling interval (2-10 min) and recorded darkness when parent was incubating. An abrupt change in light intensity (as opposed to a gradual change caused, e.g. by civil twilight) followed by a period of low or high light intensity demarcated the start or end of the incubation period [11].	2-10	71	396
GPS tag mounted on the back of the bird	The tag recorded the position of the bird [43] and incubation was assumed whenever the bird was within 25 m of the nest.	10-30	2	9
Automated receivers	Receivers recorded signal strength of a radio-tag attached to the rump of a bird; whenever a bird incubated, the strength of the signal remained constant [10].	0.07	2	3
Video cameras and continuous observations	Videos and observations were used to identify the incubating parents; parent identification was based on plumage, colour rings or radio-tag.	constant - 30	6	61

\* For technical specifications of the methods see Extended Data Table 1 in [11].

**Figure captions**

**Figure 1. Actograms illustrating the diversity of shorebird incubation rhythms. a-b,** Each actogram depicts the bouts of female (yellow; ♀) and male (blue-grey; ♂) incubation at a single nest over a 24-h period, plotted twice, such that each row represents two consecutive days. If present, twilight is indicated by light grey bars (▬) and corresponds to the time when the sun is between 6° and 0° below the horizon, night is indicated by dark grey bars (▬) and corresponds to the time when the sun is < 6° below the horizon. Twilight and night are omitted in the centre of the actogram (24:00) to make the incubation rhythm visible. The circled numbers (1 2 3 ...) indicate the breeding site of each pair (i.e. highlight which pairs bred in the same breeding site). **a,** Between-species diversity. **b,** Within-species diversity. Note that the three rhythms for Western sandpiper and Ringed plover come from the same breeding location. The actograms for each nest in the study together with the data and code to replicate the figure are freely available at <https://osf.io/wxufm/> [28]. This figure was adopted from [11].

**Figure 2. Example of daily foraging rhythms in three Montagu's Harriers.** Map presents migration tracks and corresponding bar plots represent proportion of time a bird spent flying during each hour of the day (GMT; averaged across 7-14 days) at the wintering site (lower plots), main spring migratory stopover site (middle), and breeding site (upper). Note that only daylight hours are included as Montagu's Harriers are strictly diurnal and loggers recorded the necessary detailed information (5-30 min sampling interval) only during the day. The three harriers are distinguished by colour and name.

**Figure 3. Using lidar to classify insect groups and their temporal and spatial distribution. (a)** Contour plot illustrates insect densities based on body-wing ratio and the wing beat frequency as recorded by lidar. The three major insect clusters are indicated by black curves and as verified by insect traps represent mostly *Trichoptera* and *Chironomidae* (Cluster a), swarming non-biting midges and flies (Cluster b), and compact insects (Cluster c). The number assigned to each cluster in the legend represents the number of points in that cluster [59]. **(b)** Heat maps with temporal and spatial distribution of the three insect clusters. Note that the 140m long transect (range) started in

an open meadow and terminated in a meadow surrounded by a forest edge. (a-b) Red denotes areas with a high density of insects, whereas blue denotes low insect densities. Image reproduced with permission from [59].

**Figure 4. The change of mutant *tau* allele frequency over time.** Thick line denotes the mean allele frequency, thin lines its standard errors, dashed line the 50% frequency of mutant allele. Asterisks indicate times at which the offspring of the existing mice were trapped and thus included in the censored population. The red dot indicates the final allele frequency after trapping of all mice at the end of the experiment. At the start, the mutant allele was in near Mendelian ratio (homozygote : heterozygote : wild type = 0.88 : 2.00 : 0.78, which resulted in a mutant allele frequency of 49.1%). After a little over a year, the allele frequency had dropped to 20.5%. Figure modified from [15].

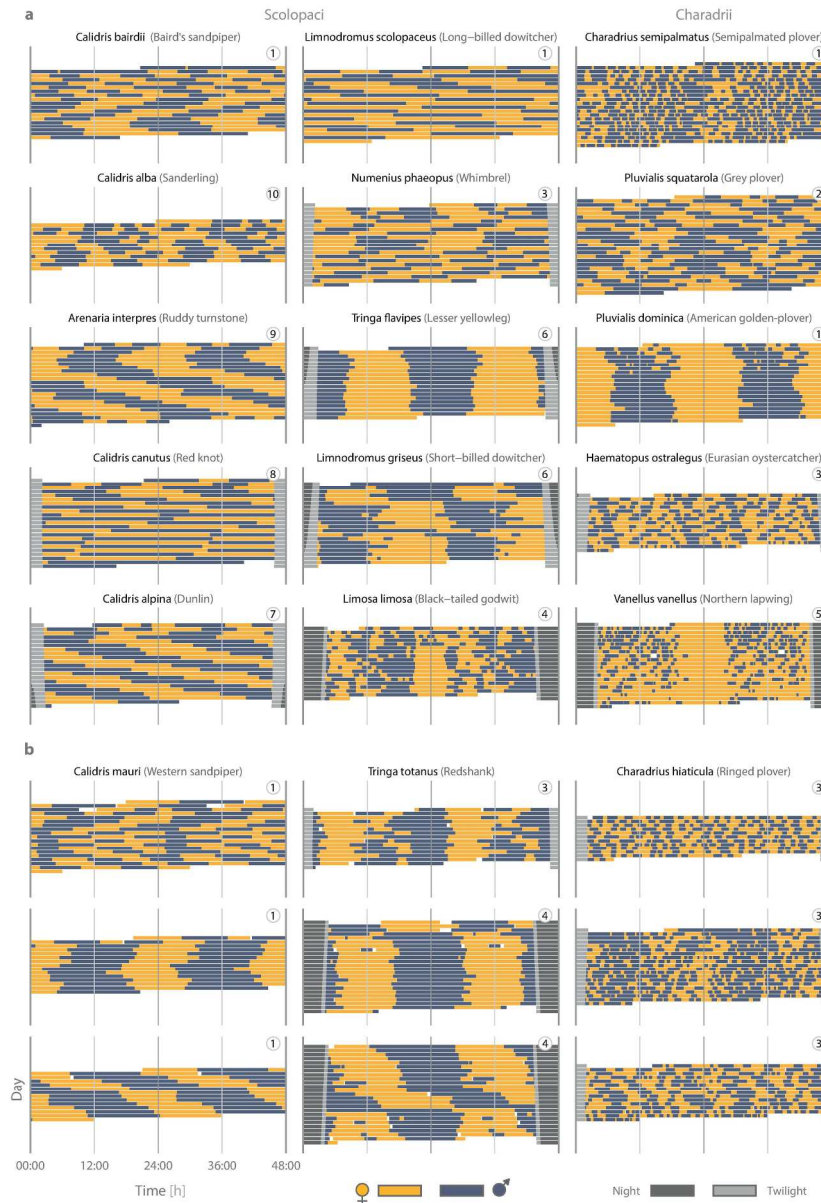


Figure 1. Actograms illustrating the diversity of shorebird incubation rhythms. a-b, Each actogram depicts the bouts of female (yellow; ♀) and male (blue-grey; ♂) incubation at a single nest over a 24-h period, plotted twice, such that each row represents two consecutive days. If present, twilight is indicated by light grey bars ( ) and corresponds to the time when the sun is between 6° and 0° below the horizon, night is indicated by dark grey bars ( ) and corresponds to the time when the sun is < 6° below the horizon. Twilight and night are omitted in the centre of the actogram (24:00) to make the incubation rhythm visible. The circled numbers ( ) indicate the breeding site of each pair (i.e. highlight which pairs bred in the same breeding site). a, Between-species diversity. b, Within-species diversity. Note that the three rhythms for Western sandpiper and Ringed plover come from the same breeding location. The actograms for each nest in the study together with the data and code to replicate the figure are freely available at <https://osf.io/wxufm/> [28]. This figure was adopted from [11].

Fig. 1  
198x288mm (300 x 300 DPI)

1  
2  
3  
4  
5  
6  
7  
8  
9  
10  
11  
12  
13  
14  
15  
16  
17  
18  
19  
20  
21  
22  
23  
24  
25  
26  
27  
28  
29  
30  
31  
32  
33  
34  
35  
36  
37  
38  
39  
40  
41  
42  
43  
44  
45  
46  
47  
48  
49  
50  
51  
52  
53  
54  
55  
56  
57  
58  
59  
60

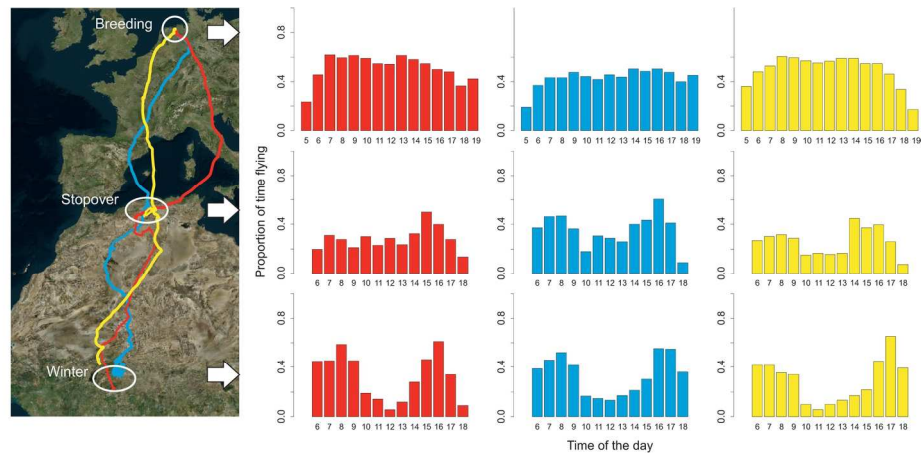


Figure 2. Example of daily foraging rhythms in three Montagu's Harriers. Map presents migration tracks and corresponding bar plots represent proportion of time a bird spent flying during each hour of the day (GMT; averaged across 7-14 days) at the wintering site (lower plots), main spring migratory stopover site (middle), and breeding site (upper). Note that only daylight hours are included as Montagu's Harriers are strictly diurnal and loggers recorded the necessary detailed information (5-30 min sampling interval) only during the day. The three harriers are distinguished by colour and name.

Fig. 2  
174x77mm (300 x 300 DPI)

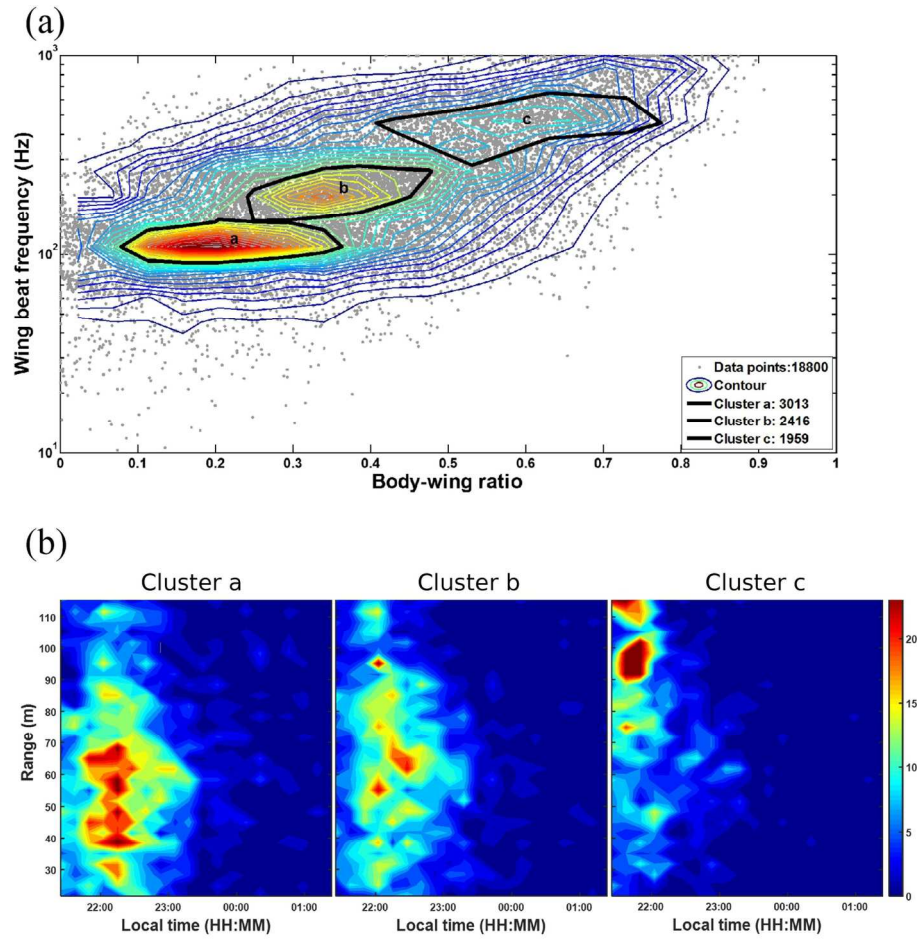


Figure 3. Using lidar to classify insect groups and their temporal and spatial distribution. (a) Contour plot illustrates insect densities based on body-wing ratio and the wing beat frequency as recorded by lidar. The three major insect clusters are indicated by black curves and as verified by insect traps represent mostly Trichoptera and Chironomidae (Cluster a), swarming non-biting midges and flies (Cluster b), and compact insects (Cluster c). The number assigned to each cluster in the legend represents the number of points in that cluster [59]. (b) Heat maps with temporal and spatial distribution of the three insect clusters. Note that the 140m long transect (range) started in an open meadow and terminated in a meadow surrounded by a forest edge. (a-b) Red denotes areas with a high density of insects, whereas blue denotes low insect densities. Image reproduced with permission from [59].

Fig. 3  
145x136mm (300 x 300 DPI)

