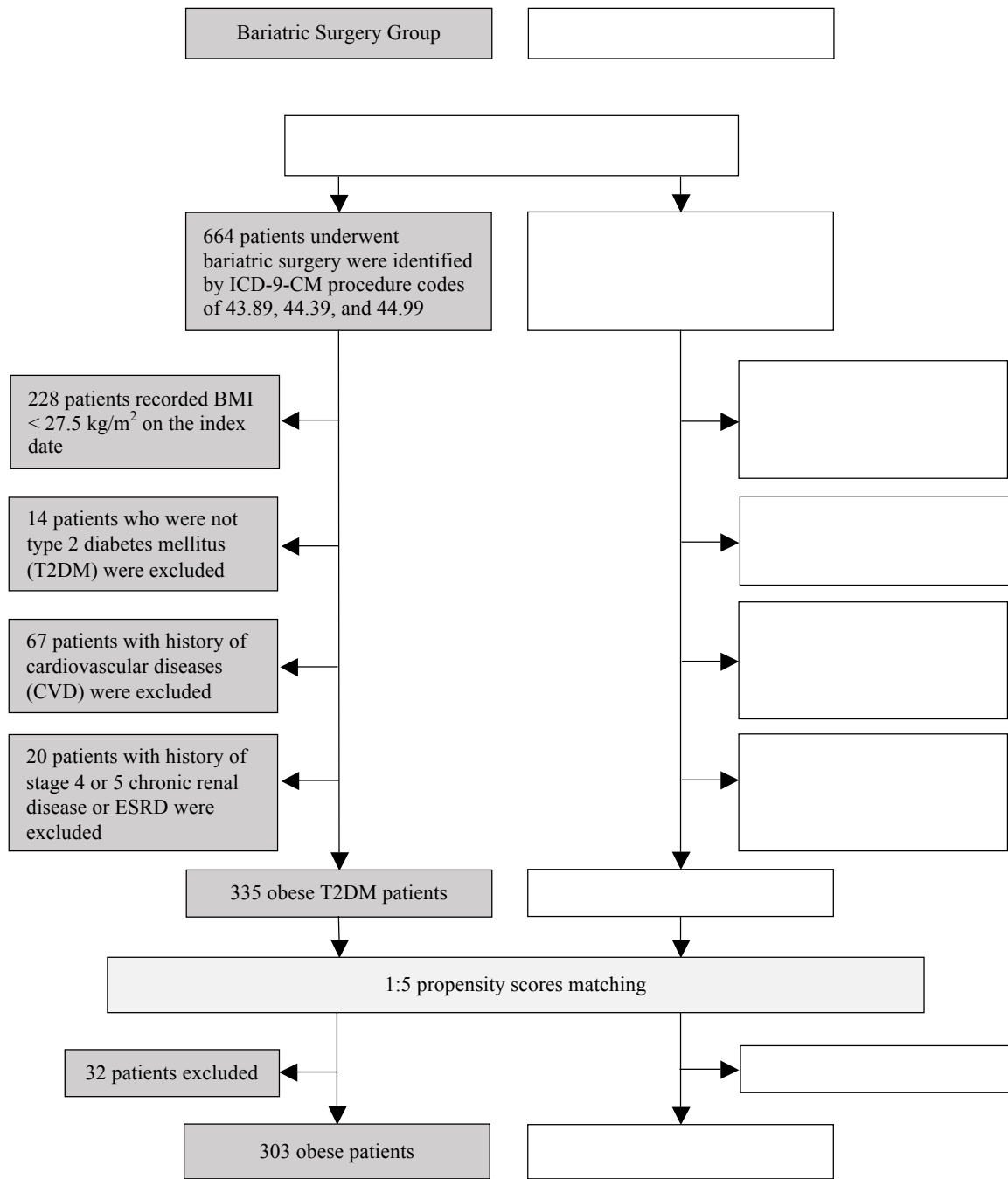
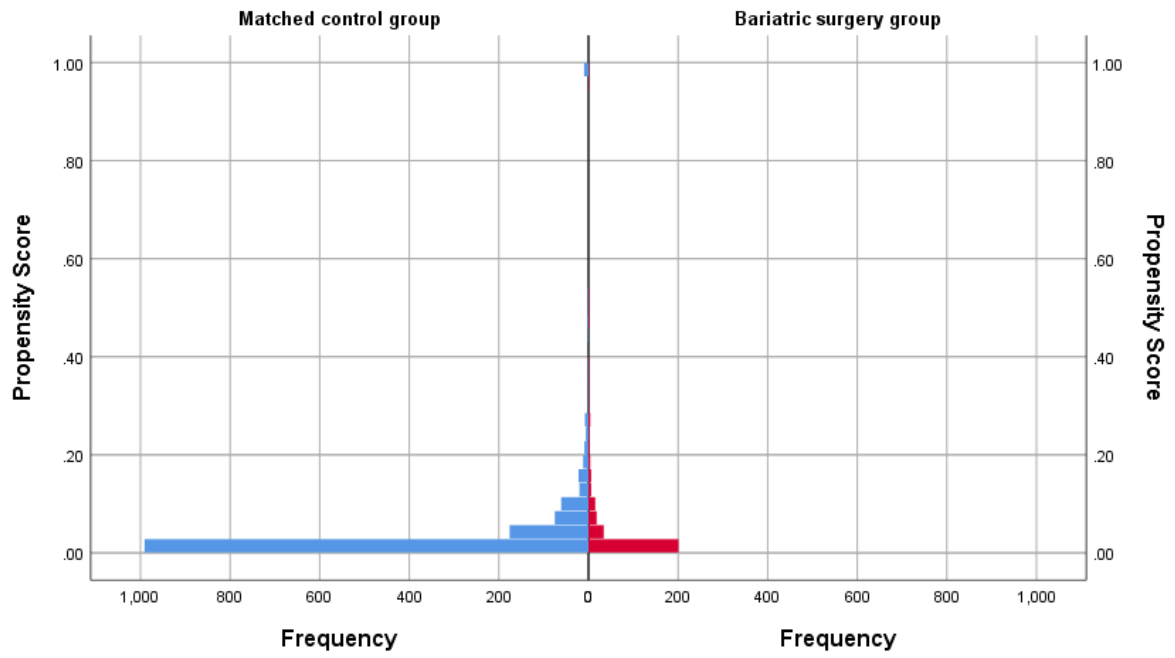


Supplemental Figure 1. Flowchart of the study including the enrollment of patients from bariatric surgery group and matched control group



Cohort entry year	Bariatric Surgery Group	Matched Control Group
2006-2010	35	147
2011-2013	63	304
2014-2015	73	335
2016-2017	132	613

Supplemental figure 2: Pyramid of propensity score distribution among bariatric surgery and matched control group



Supplemental Table 1. List of relevant diagnosis codes

Description	Diagnosis Code
Prior severe hypoglycemia	250.30-250.33; 250.80-250.83; 251.0-251.2; 270.3; 775.0; 775.6; 962.3
Acute myocardial infarction	410.00-410.92
Other ischemic heart disease	411.0; 411.1; 411.81; 411.89; 412; 413.0; 413.1; 413.9; 414.00-414.07; 414.10-414.12; 414.19; 414.2-414.4; 414.8; 414.9
Congestive heart failure	428.0-428.9
Stroke	430; 431; 432.0-432.9; 433.00-433.91; 434.00-434.91; 435.0-435.9; 436; 437.0- 437.9; 438.0-438.9
Peripheral vascular disease	250.60-250.69; 440.2; 997.2; 997.6
Stage 4 or 5 chronic kidney disease*	585.4-585.6
End-stage kidney disease#	585.6
Acute myocardial infarction	K75
Other ischemic heart disease	K74; K76
Congestive heart failure	K77
Stroke	K89; K90; K91
Peripheral vascular disease	K92

Note:

\*Stage 4 or 5 chronic kidney disease is also defined by the ICD-9-CM code with eGFR < 30 ml/min/1.73m<sup>2</sup>

#End-stage kidney disease is also defined by the ICD-9-CM code with eGFR < 15 ml/min/1.73m<sup>2</sup>