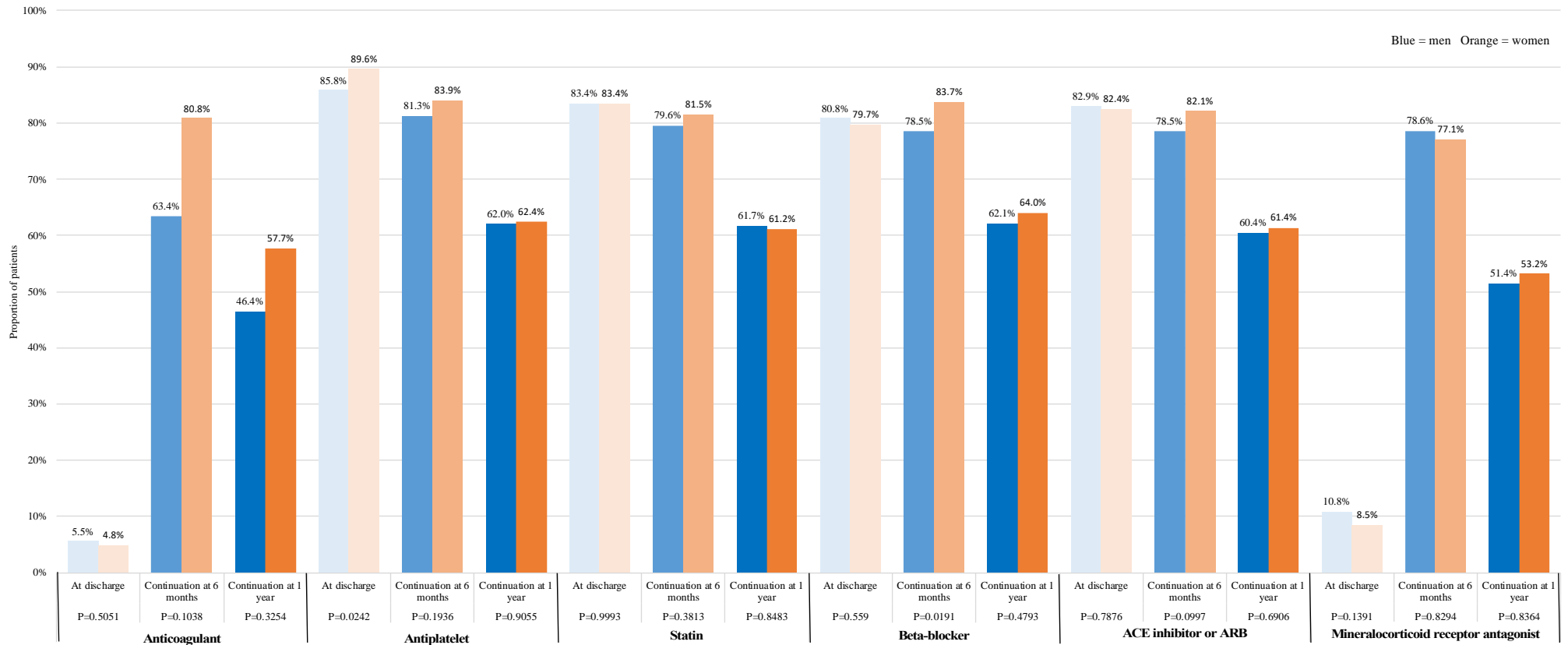


Supplementary Figure 1a. Medical therapy at discharge*, at 6 months and at 1 year** for STEMI according to sex and medication**

Short title: STEMI medical therapy



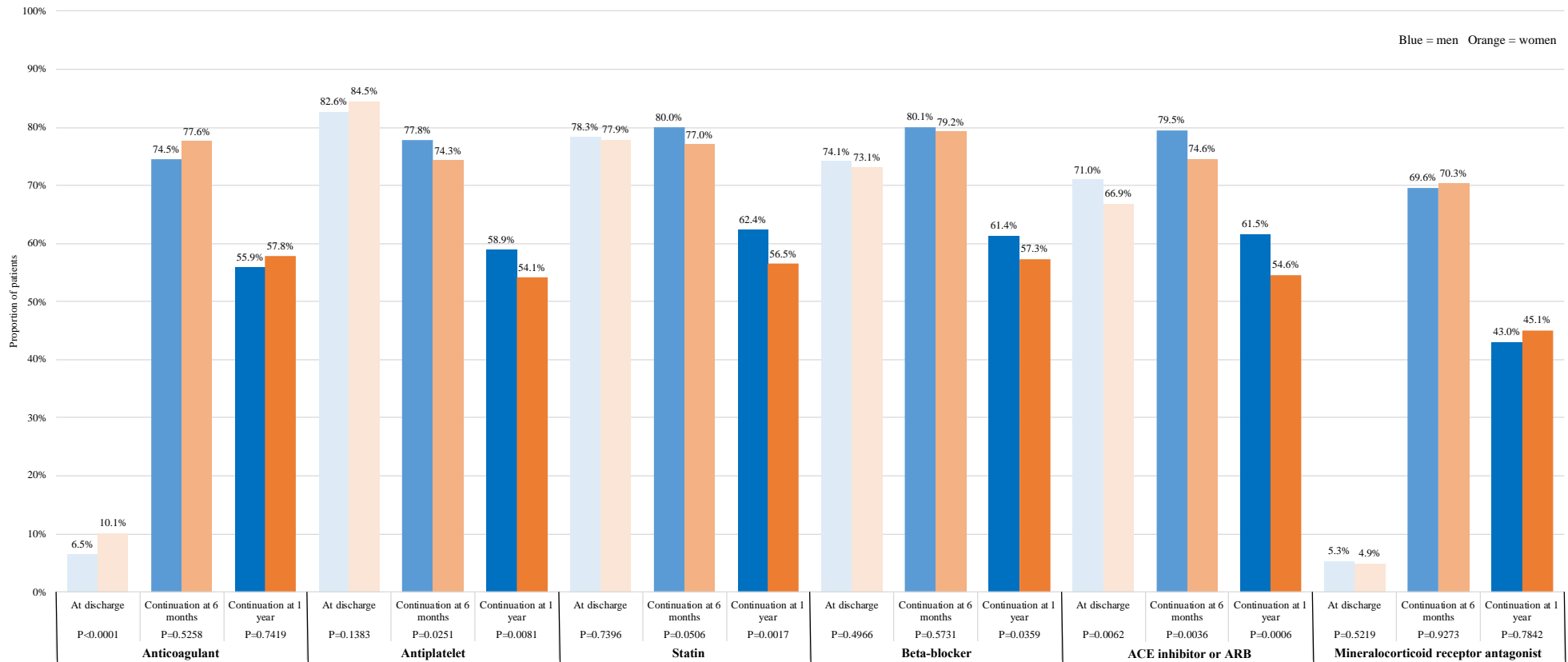
ACE=angiotensin-converting enzyme; ARB=angiotensin receptor blocker

** At discharge is defined as within 90 days post-discharge*

*** Proportions shown for 6 months and 1 year are of those on the drug(s) at discharge and still alive*

Supplementary Figure 1c. Medical therapy at discharge*, at 6 months and at 1 year** for NSTEMI according to sex and medication**

Short title: NSTEMI medical therapy



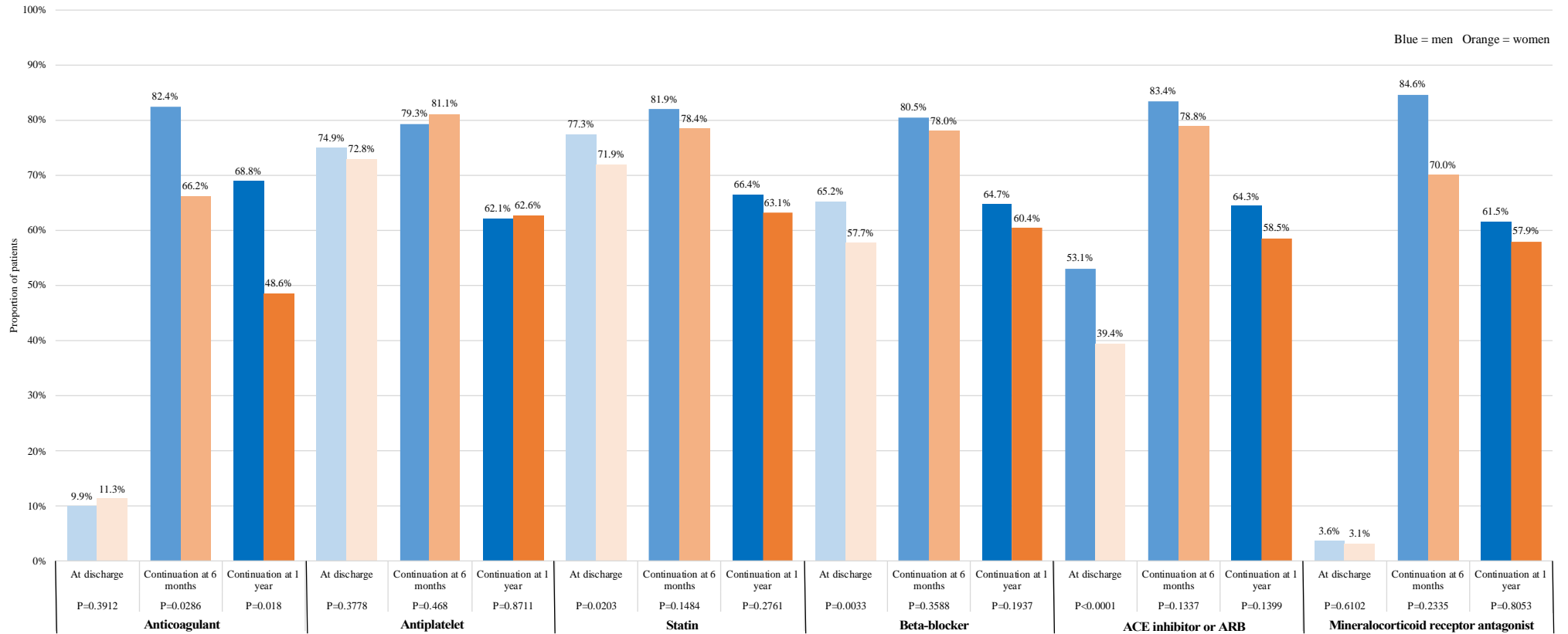
ACE=angiotensin-converting enzyme; ARB=angiotensin receptor blocker

* At discharge is defined as within 90 days post-discharge

** Proportions shown for 6 months and 1 year are of those on the drug(s) at discharge and still alive

Supplementary Figure 1c. Medical therapy at discharge*, at 6 months and at 1 year** for HA according to sex and medication**

Short title: HA medical therapy



ACE=angiotensin-converting enzyme; ARB=angiotensin receptor blocker

** At discharge is defined as within 90 days post-discharge*

*** Proportions shown for 6 months and 1 year are of those on the drug(s) at discharge and still alive*